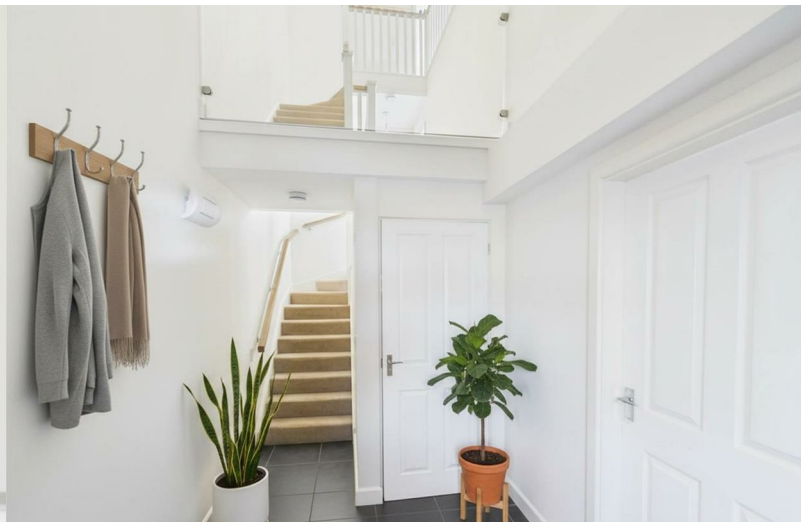
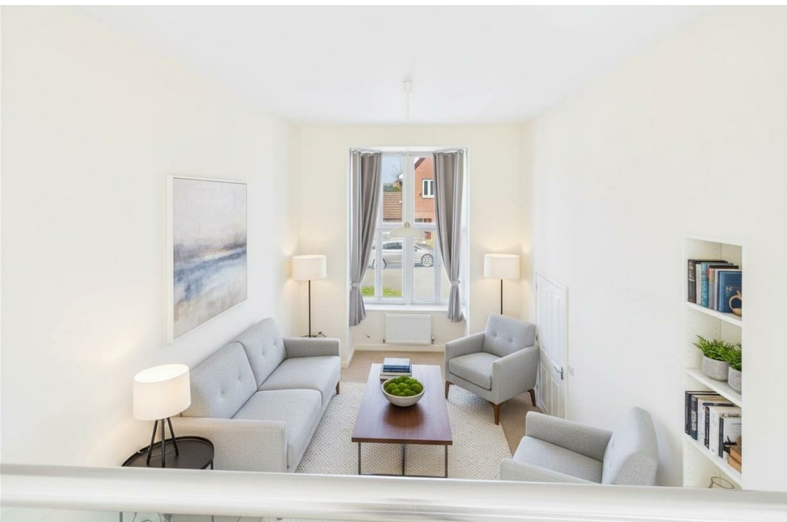




Sneyd Wood Road

Cinderford, GL14 3GA

£325,000



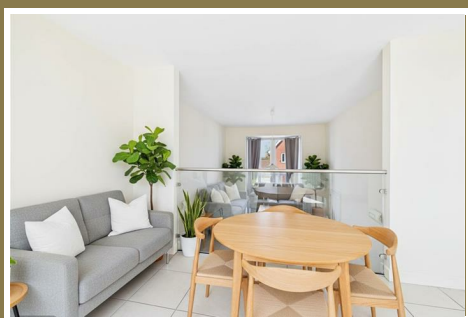
Situated on Sneyd Wood Road, Cinderford, this delightful link-detached house offers a perfect blend of comfort and convenience. With four bedrooms, this property is ideal for families seeking a welcoming home. The bright and airy living space is designed to create a warm atmosphere, perfect for both relaxation and entertaining.

The house features a well-appointed kitchen/diner, providing ample space for family gatherings. The two bathrooms ensure that morning routines run smoothly, catering to the needs of a busy household.

The property backs onto fields, perfect for enjoying the beauty of nature right at your doorstep.

Additionally, the property benefits from parking for two vehicles, making it convenient for families with multiple cars. With no onward chain, this home is ready for you to move in without delay, allowing you to settle in and start making memories right away.

This residence is not just a house; it is a place where you can truly feel at home. If you are looking for a property that combines space with its accommodation over 3 level this is an opportunity not to be missed.



Entrance Hallway :

8'1" x 6'11" (2.48 x 2.12)

Tiled floor, radiator, consumer box, smoke alarm, wall lighting, stairs to first floor.

Cloakroom :

4'11" x 3'2" (1.50 x 0.99)

Low level WC, wash hand basin with tiled splash back, radiator, extractor fan, tiled floor.

Lounge :

18'2" x 11'11" (5.55 x 3.65)

Two double storage cupboards, two radiators, wall lighting, double glazed window to front aspect, high ceiling with glass panel to dining room.

First Floor Landing :

5'4" x 3'10" (1.63 x 1.17)

Radiator, smoke alarm, stairs to second floor.

Kitchen Area :

10'2" x 7'1" (3.12 x 2.18)

Matching wall and base cabinets, sink unit, integrated fridge/freezer, oven, gas hob, extractor hood and dishwasher, space for washing machine, wall mounted gas boiler, radiator, tiled floor, double glazed window to rear aspect.

Dining Area :

14'0" x 11'11" (4.28 x 3.65)

Radiator, tiled floor, glass panel overlooking lounge, double glazed French doors to rear garden.

Second Floor Landing :

10'11" x 2'11" (3.34 x 0.91)

Radiator, access to loft space.

Bedroom 1 :

11'8" x 9'0" (3.56 x 2.76)

Fitted wardrobe with sliding mirrored doors, radiator, double glazed window to front aspect.

Ensuite :

3'10" x 9'1" (1.17 x 2.79)

Fully tiled shower cubicle, low level WC, wash hand basin with tiled splash back, extractor, shaver point, radiator, tiled floor.

Bedroom 2 :

10'3" x 9'10" (3.14 x 3.00)

Radiator, double glazed window to rear aspect.

Bedroom 3 :

7'1" x 10'0" (2.18 x 3.06)

Fitted double wardrobe,, radiator, double glazed window to front aspect.

Bedroom 4 :

6'10" x 9'5" (2.09 x 2.89)

Radiator, double glazed window to rear aspect.

Rear - Split level, mainly laid to lawn, fully enclosed by fencing, fields to rear.

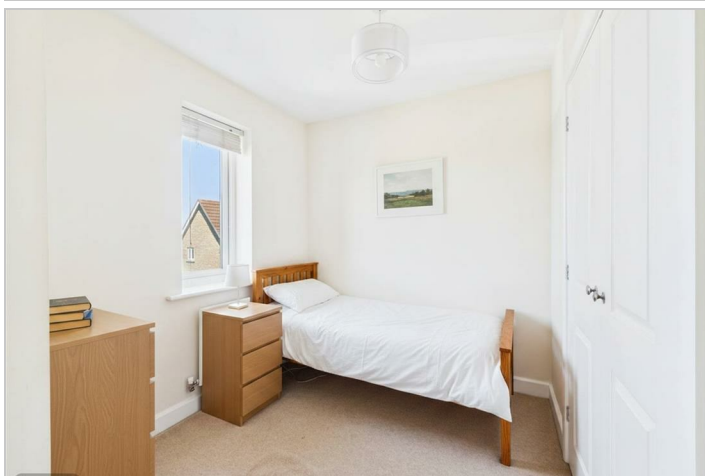
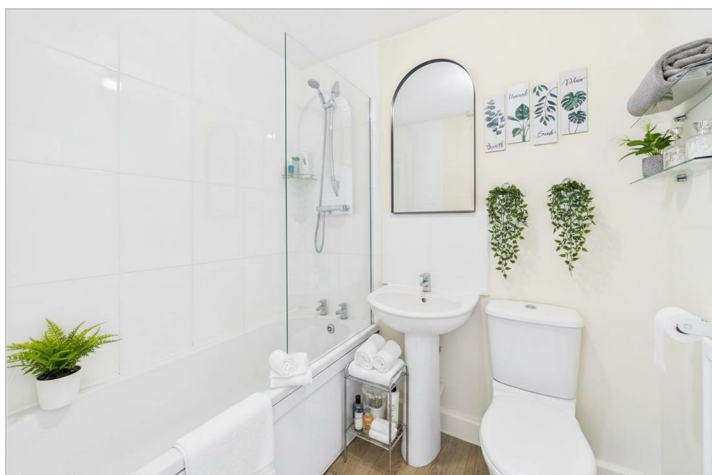
Family Bathroom :

6'9" x 5'6" (2.06 x 1.68)

White suite comprising of bath with shower over, low level WC, wash hand basin with tiled splash back, radiator, extractor, laminate flooring.

Outside :

Front - Lawn and hedging, carport and driveway, steps to front door.



Dean Estate Agents Ltd have prepared the information within this website/brochure with infinite care and without a guarantee of accuracy. Before you act upon any information provided, we request that you satisfy yourself about the completeness, accuracy, reliability, suitability, or availability with respect to the website or the information, products, services, or related graphics contained on our website for any purpose.

These details do not constitute any part of any Offer, Contract or Tenancy Agreement. Photographs used for advertising purposes may not necessarily be the most recent photographs. All photographic images are under the ownership of Dean Estate Agents Ltd and therefore Dean Estate Agents retain the copyright.

Tenanted Property – we are not always able to show the most recent condition of a property due to tenants' privacy and may choose to show the photographs of the property when it was last vacant to at least allow clients some idea of the internal condition at that time.

Energy Performance Certificates are supplied to us via a third party and we do not accept responsibility for the content within such reports.

As with leasehold property or new build development sites, you are likely to be responsible for a contribution to management charges and/or ground rent or a contribution to the development service charge. Please enquire at the time of viewing. You may also incur fees for items such as leasehold packs and, in addition, you will also need to check the remaining length of any lease before you complete a mortgage application form. You must therefore consult with your legal representatives on these matters at the earliest opportunity before making a decision to purchase or incurring costs.

Measurements: Great care is taken when measuring, but measurements should not be relied upon for ordering carpets, equipment etc.

The Laws of copyright protect this material. Dean Estate Agents is the owner of the copyright. This property sheet forms part of our database and is protected by the database right and copyright laws.

Equipment: Dean Estate Agents have not tested the equipment or any central heating system mentioned in these particulars and the purchaser is advised to satisfy themselves as to the working order and condition of any related equipment.

Tenure: We are advised freehold.

Agents Note: Please contact Dean Estate Agents for an updated brochure if applicable.

Road Map



Hybrid Map



Terrain Map



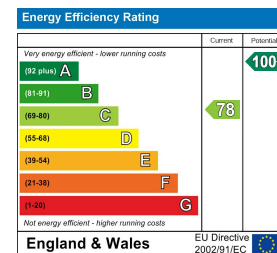
Floor Plan



Viewing

Please contact our Cinderford Office on 01594 825574 if you wish to arrange a viewing appointment for this property or require further information.

Energy Efficiency Graph



These particulars, whilst believed to be accurate are set out as a general outline only for guidance and do not constitute any part of an offer or contract. Intending purchasers should not rely on them as statements of representation of fact, but must satisfy themselves by inspection or otherwise as to their accuracy. No person in this firm's employment has the authority to make or give any representation or warranty in respect of the property.