



Dalston Lane, E8

£700,000

An exceptionally spacious two-bedroom apartment set within an imposing, character-rich Victorian building dating back to the 1860s. Measuring 794 square feet, this unique property seamlessly blends expansive proportions with a wealth of beautifully preserved period features.

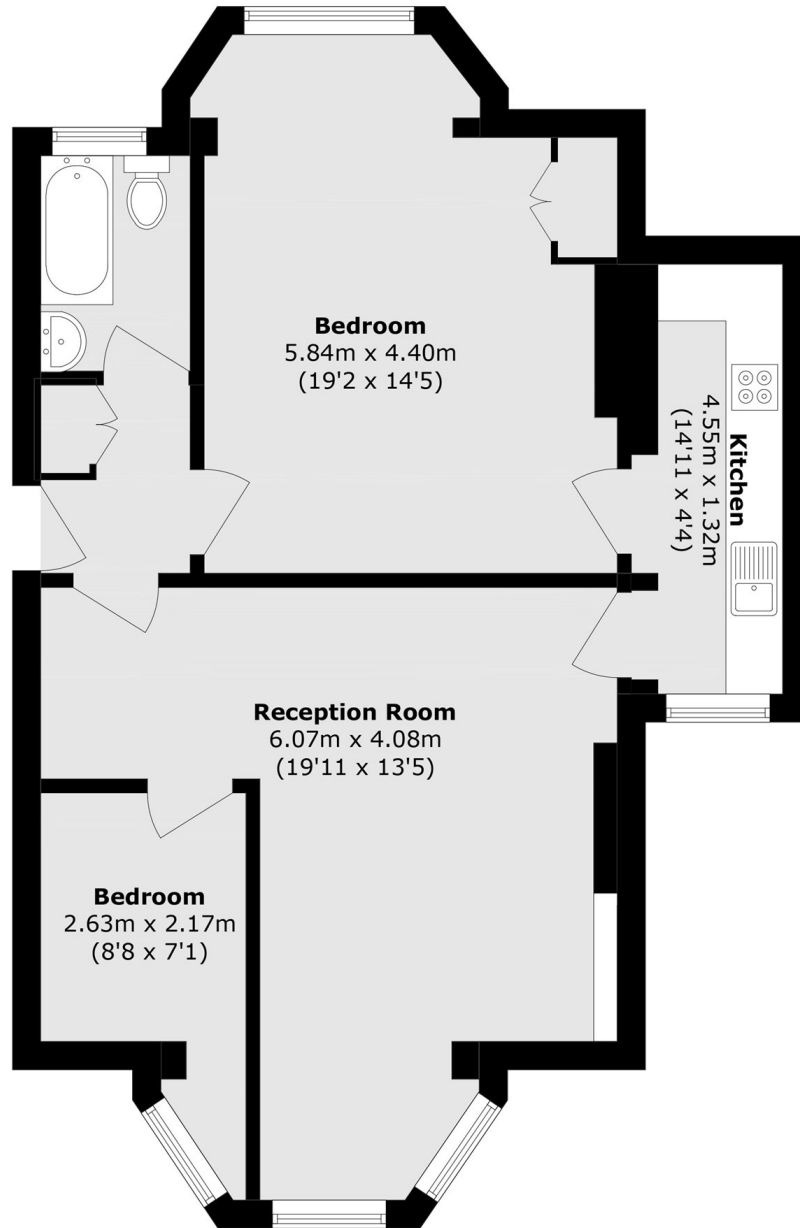
Situated in a prime central Dalston location, the property has a vibrant array of independent shops, cafes, restaurants, and wine bars right on its doorstep, with the green spaces of London Fields and Broadway Market just a short walk away.

Transport links are unparalleled: Dalston Junction Overground is a mere 5-minute walk, while both Dalston Kingsland and Hackney Downs Overground stations are reachable in under 10 minutes. Combined with excellent 24-hour bus routes, commuting across the City and West End is effortless.

Features

- Victorian Conversion
- Bright & Spacious
- Prime Location
- Large Communal Garden
- Superbly Connected

Dalston Lane, LONDON, E8



Total area (approx.): 73.8 sq. m (794.3 sq. ft)