



Sycamore Way, Brantham  
£390,000

## Property Overview:

*This well presented four bedroom detached home offers comfortable and practical accommodation, making it ideal for first time buyers, families, and downsizers alike. The property has been well maintained and provides a good balance of space and functionality throughout.*

*The property offers four bedrooms, with the main bedroom benefitting from fitted wardrobes with sliding doors. The remaining bedrooms provide flexibility for family living, guest accommodation, or the option to create a home office. The family bathroom is fitted with a shower over the bath, while a downstairs WC adds everyday convenience for both residents and visitors.*

*The lounge diner provides a bright and versatile living space, suitable for both relaxing and entertaining, and leads through to the separate kitchen. Installed approximately six years ago, the kitchen features an island, integrated dishwasher and washing machine, oven, and gas hob, making it well suited to modern day living.*

*Outside, the rear garden is laid to lawn and complemented by raised beds and a shed, creating an attractive space for gardening, relaxing, or outdoor dining. The property also benefits from ample off road parking and a detached single garage, providing useful storage and secure parking.*





- *DETACHED FAMILY HOME*
- *FOUR BEDROOM*
- *POPULAR LOCATION*
- *DETACHED GARAGE & DRIVEWAY*
- *CLOAKROOM*
- *LOUNGE/DINER*
- *NO ONWARD CHAIN*

**LOCATION:**

*Brantham is a large village in the Stour Valley with the river Stour forming one of its boundaries and it is surrounded by picturesque countryside including the villages of Stutton, Tattingstone, East Bergholt and Flatford. Famous for inspiring many painting of John Constable and known as Constable Country.*

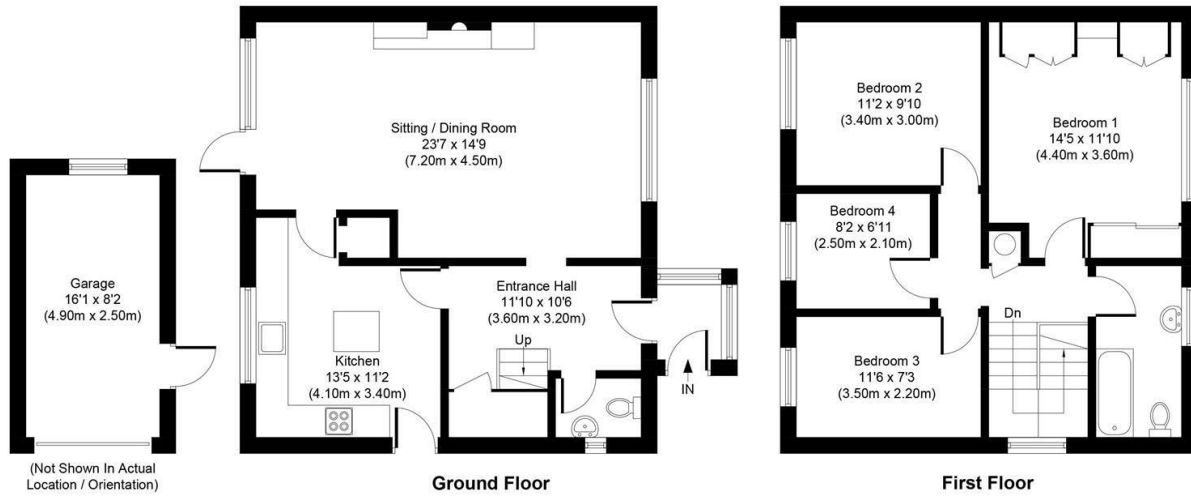
*The village is ideally situated halfway between Ipswich, the county town of Suffolk, and historic Colchester, Essex. Their shops, facilities, bars, restaurants and nightlife are easily accessed by public transport as well as by car. Manningtree, reputedly the smallest market town in England, lies across the River Stour and its railway provides fast links to London, Norwich, the ports of Harwich and Felixstowe, and the beautiful beaches of the Sunshine Coast. Brantham has many amenities including, churches, pubs, Pizza restaurant, a Co-op, a cafe, a vet, three play areas, a preschool and primary school.*

*Tenure - Freehold  
Council Tax - Band D  
Services Connected - Mains Electric/Water/Drainage/Mains Gas Heating - Via gas boiler  
Telephone & Broadband - EE, O2 & Vodafone mobile networks available indoor & Ultrafast broadband available*

## Floor Plan

Approximate Gross Internal Area  
 Main House 1229 sq ft (114.2 sq m)  
 Garage 136 sq ft (12.6 sq m)  
 Total 1365 sq ft (126.8 sq m)

Disclaimer: Floor plan measurements are approximate and are for illustrative purposes only. While we do not doubt the floor plan accuracy and completeness, you or your advisors should conduct a careful, independent investigation of the property in respect of monetary valuation.  
 © WFP Photography Ltd 2026 | www.williamspitt.co.uk



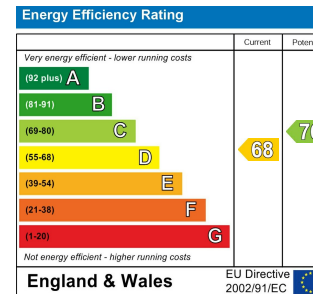
## Area Map



## Viewing

Please contact our Chamberlain Phillips Manningtree Office on 01206 646479 if you wish to arrange a viewing appointment for this property or require further information.

## Energy Efficiency Graph



These particulars, whilst believed to be accurate are set out as a general outline only for guidance and do not constitute any part of an offer or contract. Intending purchasers should not rely on them as statements of representation of fact, but must satisfy themselves by inspection or otherwise as to their accuracy. No person in this firm's employment has the authority to make or give any representation or warranty in respect of the property.

6 Dairy Barn Mews, Summers Park, Lawford, Manningtree, Essex, CO11 2BZ  
 Tel: 01206 646479 Email: info@chamberlainphillips.co.uk www.chamberlainphillips.co.uk