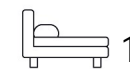




Living
made
better

Hoola Apartments
Royal Victoria Dock, E16 1UW



£2,050 PCM

Hoola Apartments, Royal Victoria Dock, E16 1UW

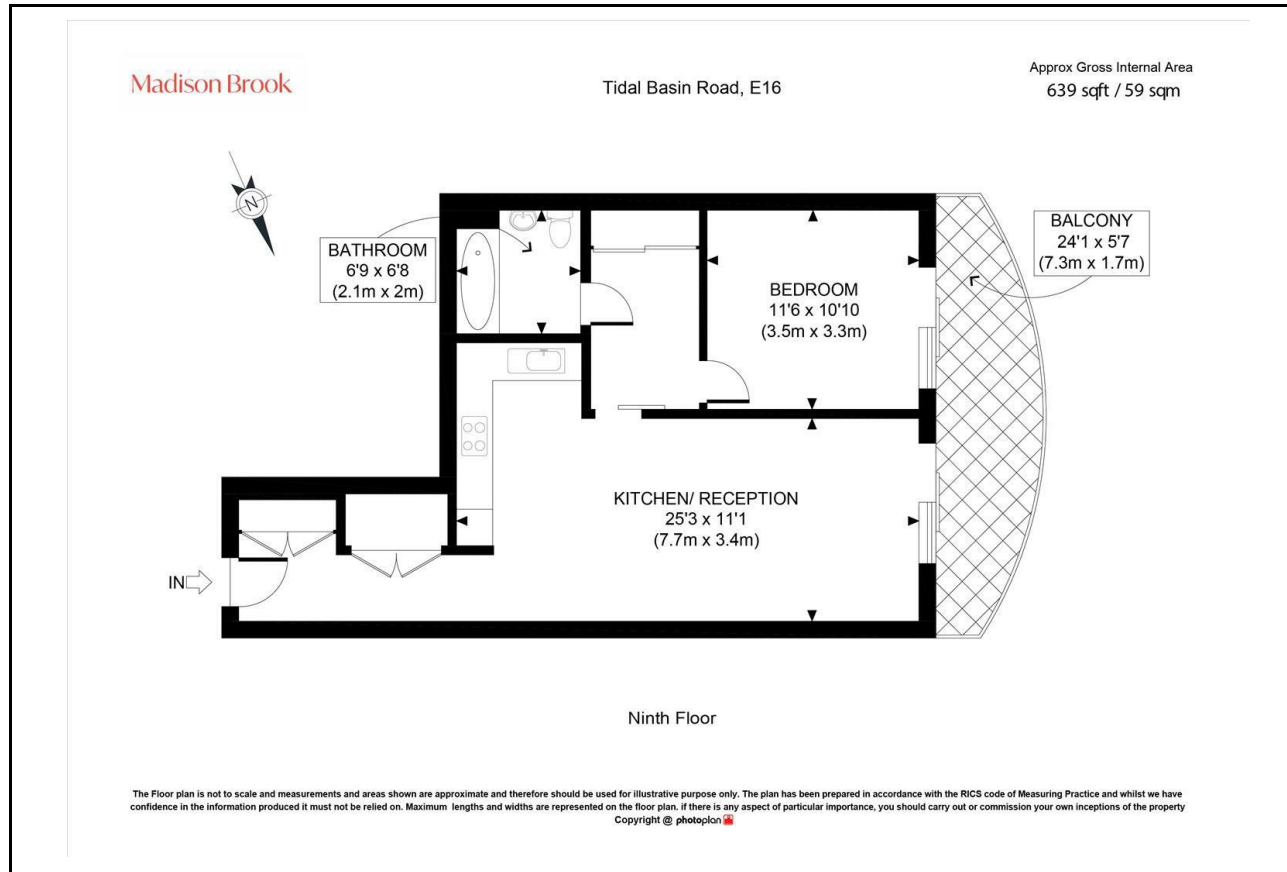
Madison Brook

Property Summary

This stunning 9th floor apartment provides 639 sq.ft. of internal living space. Featuring floor-to-ceiling windows to the open-plan lounge/kitchen, with integrated appliances, double bedroom, walk in wardrobe area, chic master bathroom, two utility cupboards and a sizeable private terrace overlooking the marina. This development also boasts a private resident's gymnasium and a 24-hour concierge.

Hoola is located in the stunning surrounds of Excel Marina, just moments from the IFS Cable Car, City Hall & O2 Arena. Royal Victoria (DLR) & Canning Town (Jubilee) are within easy reach.

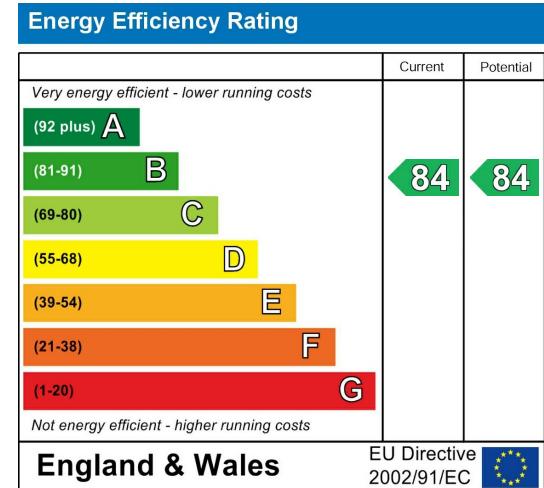
Floorplan



Area Map



Energy Efficiency Graph



These particulars, whilst believed to be accurate are set out as a general outline only for guidance and do not constitute any part of an offer or contract. Intending purchasers should not rely on them as statements of representation of fact, but must satisfy themselves by inspection or otherwise as to their accuracy. No person in this firm's employment has the authority to make or give any representation or warranty in respect of the property.

Unit B 20 Western Gateway, Royal Victoria
Dock, London, E16 1BS
Tel: 020 3946 6000 Email:
docklands@madisonbrook.com
<https://madisonbrook.com/>