



HOMES BY VICTORIA
ESTATE AGENCY

21 Brookfield Close, Hunt End

Offers Over £430,000

4 bedrooms 2 bathrooms 2 cars



Tucked away within a quiet cul-de-sac in the ever-popular Hunt End area of Redditch, this beautifully arranged four-bedroom link-detached home offers spacious, versatile living perfectly suited to modern family life. Positioned within easy reach of well-regarded schools and local amenities, the property combines convenience with a peaceful residential setting.

homesbyvictoria.co.uk

victoria@homesbyvictoria | 07833 136521

FOR M HOMES MIDLANDS LIMITED trading as Homes By Victoria Company Number: 13688840 VAT no: 470190115



HOMES BY VICTORIA
ESTATE AGENCY

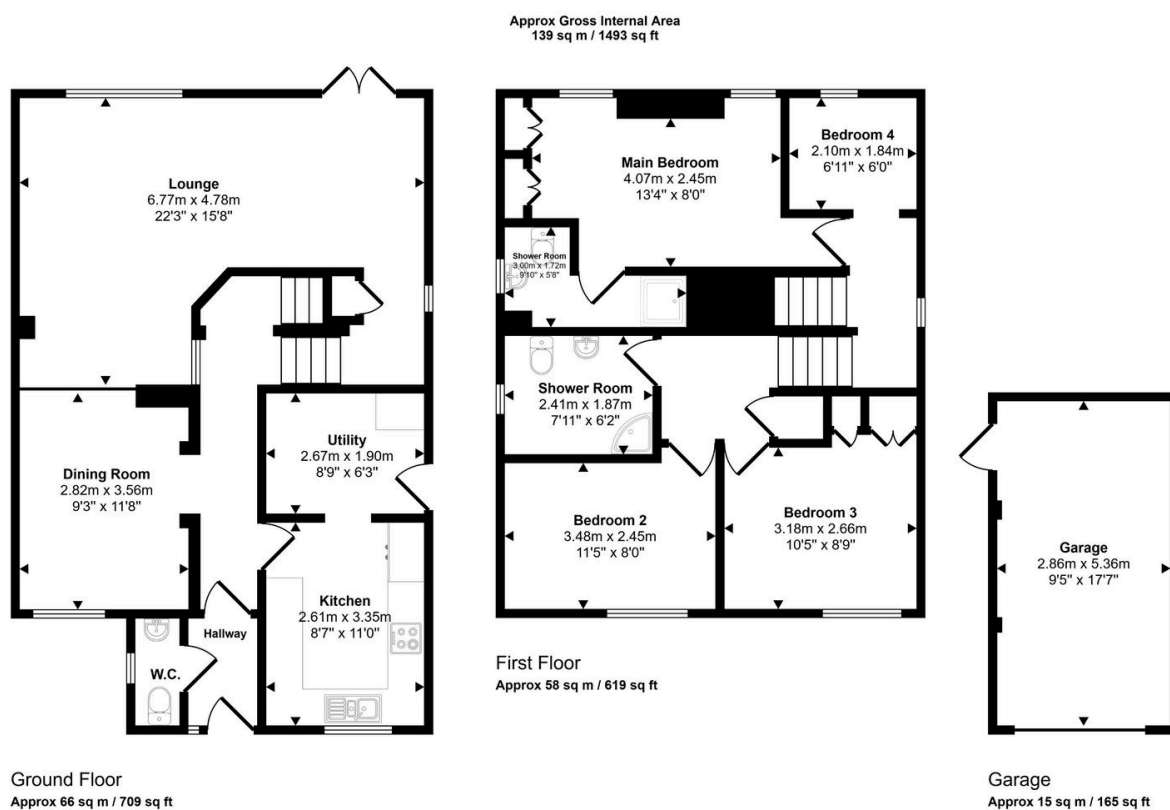


HOMES BY VICTORIA

ESTATE AGENCY

Key Features

- SOUGHT AFTER LOCATION
- LINK DETACHED FAMILY HOME
- TWO RECEPTION ROOMS
- FAMILY SHOWER ROOM
- CAR PORT AND SINGLE GARAGE
- POSITIONED IN A QUIET CUL DE SAC
- MODERN KITCHEN AND UTILITY
- MASTER BEDROOM WITH EN-SUITE
- PRIVATE REAR GARDEN
- EPC RATING C



This floorplan is only for illustrative purposes and is not to scale. Measurements of rooms, doors, windows, and any items are approximate and no responsibility is taken for any error, omission or mis-statement. Icons of items such as bathroom suites are representations only and may not look like the real items. Made with Made Snappy 360.