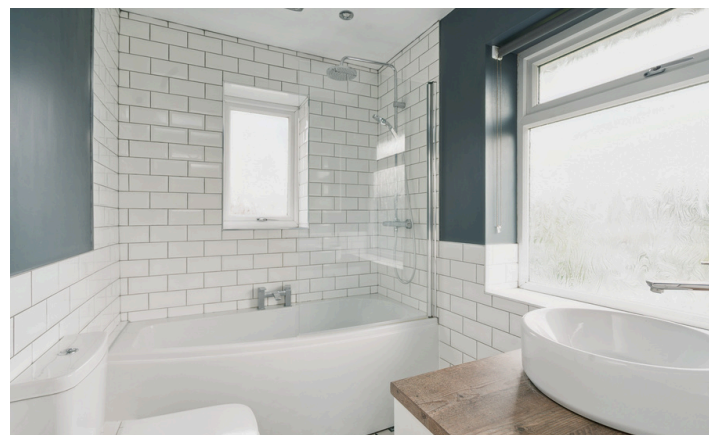


**Need a Mortgage in principle to make offers?** Call us now for quick assistance!  
**0121 775 0101**



**Do you need to sell? Start your journey now!** Call us we can help.  
**0121 775 0101**



**SCAN FOR MORE INFO**  
**SIZE** - 980 Sq Ft  
**TENURE** - Freehold  
**COUNCIL TAX** - Solihull Metropolitan Borough Council - C  
**BROADBAND** - Upload Max 1000Mbps Download Max 1800Mbps  
**MOBILE SERVICES** - EE - 85%, 3 - 85%, 02 - 81%, Vodafone - 80%  
**EPC** - D - 59  
**PARKING** - For 2 Cars  
**FLOODRISK** - Very Low  
**SERVICES** - Mains  
**COVENANTS** - N/A

## 1 Redlands Close

**Solihull, B91 2LY**  
**Offers Over £325,000**

A delightful semi-detached house presenting an excellent opportunity for first-time buyers or investors. The property is offered with no upward chain, allowing for a smooth transition into your new home.

### FEATURES

- No Upward Chain
- Ideal First Time Buyer or Investor Opportunity
- Dual Aspect Lounge
- Fitted Kitchen/Diner
- Principal Bedroom with Wardrobes
- Two Further Bedrooms with Built In Storage
- Modern Family Bathroom
- Private Rear Garden
- Two Parking Spaces
- Convenient Location

**Are you an investor interested in expanding your portfolio?**

**Call 0121 775 0101 to provide your investment criteria for alerts.**



### Sneak Peeks

Every week, we unveil "Sneak Peeks," a feature showcasing exclusive properties before they hit Rightmove and other platforms.

### The Landlord Club

Join our Landlord Club for weekly updates on legislation, market trends, and our Letting Director's 'Investment Pick of the Week' for optimal ROI.

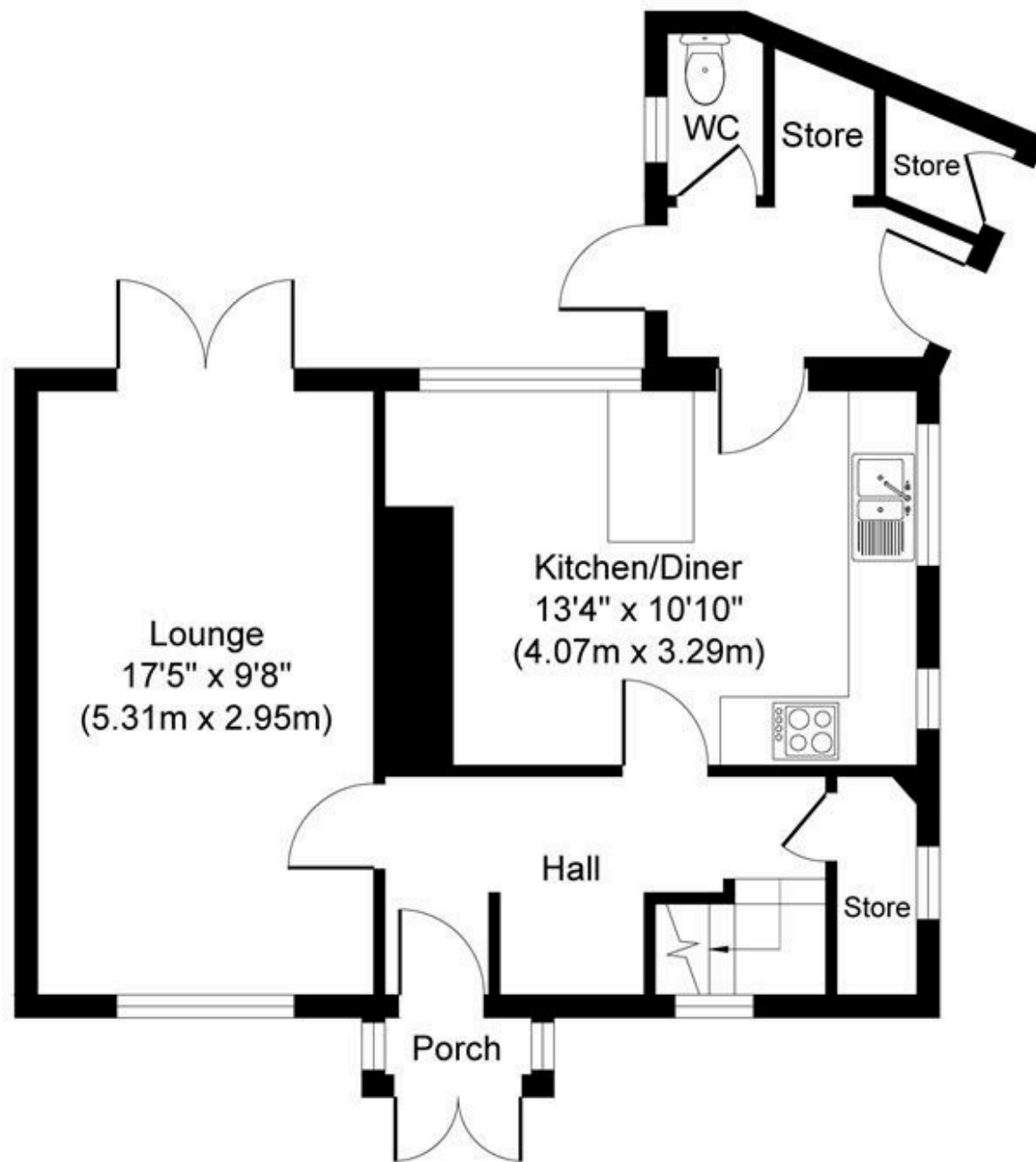
### HTSPMD

Tune into 'How's The Solihull Property Market Dom' weekly for a quick, insightful snapshot of the market.

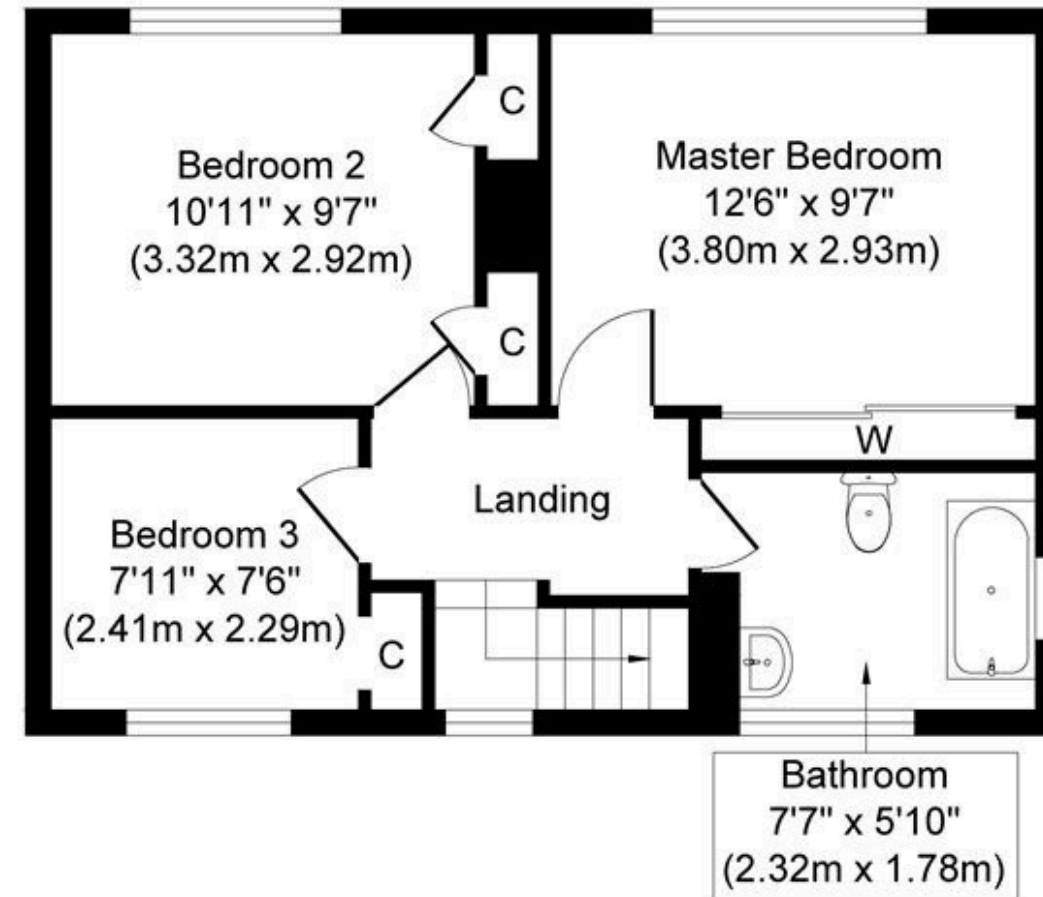
### The Mortgage Update

Get weekly insights and the best deals with our Mortgage Update, your shortcut to navigating the complex mortgage landscape confidently.

SCAN TO VIEW OUR WEEKLY FILMS & SUBSCRIBE



**Ground Floor**  
**Approximate Floor Area**  
**528 sq. ft**  
**(49.00 sq. m)**



**First Floor**  
**Approximate Floor Area**  
**452 sq. ft**  
**(42.00 sq. m)**

Whilst every attempt has been made to ensure the accuracy of the floor plan contained here, measurements of doors, windows, rooms and any other items are approximate and no responsibility is taken for any error, omission, or mis-statement. The measurements should not be relied upon for valuation, transaction and/or funding purposes. This plan is for illustrative purposes only and should be used as such by any prospective purchaser or tenant. The services, systems and appliances shown have not been tested and no guarantee as to their operability or efficiency can be given.