



15 Burgin Close, Foston
Grantham

£323,000

DavidGrace





15 Burgin Close

Foston, Grantham

Flexible 4-bed Detached, 4-Car Driveway, South Facing Garden, Cul-de-Sac, AI Access
Council Tax band: C

Tenure: Freehold

EPC Energy Efficiency Rating: C

EPC Environmental Impact Rating:

- Quiet Cul-de-Sac Location in Sought-After Foston
- Flexible 4-Bedroom Layout (Ideal for Home Working or Guests)
- Dedicated Home Office/Guest Suite with External Access
- South-Facing Garden with Integrated Watering System
- Spacious Kitchen (5.0m) and Strong Entertaining Layout
- Cosy Lounge with Wood Burning Stove and Conservatory Providing Great Space
- Recently Installed Boiler
- Large Private Driveway with Parking up to 4 Vehicles
- Garage for Additional Storage and EV Charging Point
- EPC - C



Hallway

Living Room

13' 5" x 12' 6" (4.10m x 3.80m)

Dining Room

12' 6" x 12' 2" (3.80m x 3.70m)

Conservatory

Kitchen

16' 5" x 13' 9" (5.00m x 4.20m)

Bedroom 4/Office

7' 7" x 7' 3" (2.30m x 2.21m)

WC

Landing

Bedroom 1

13' 1" x 11' 6" (4.00m x 3.50m)

Bedroom 2

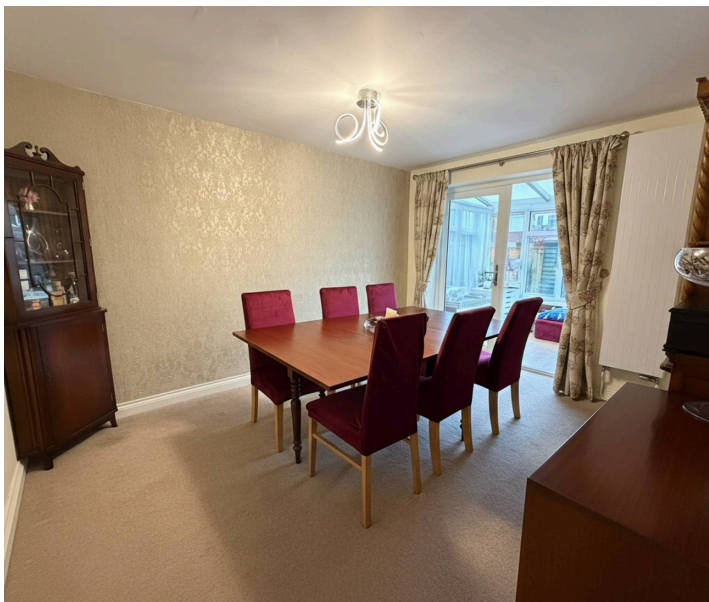
10' 6" x 12' 6" (3.20m x 3.80m)

Bedroom 3

10' 2" x 7' 3" (3.10m x 2.20m)

Bathroom

Garage





GARDEN

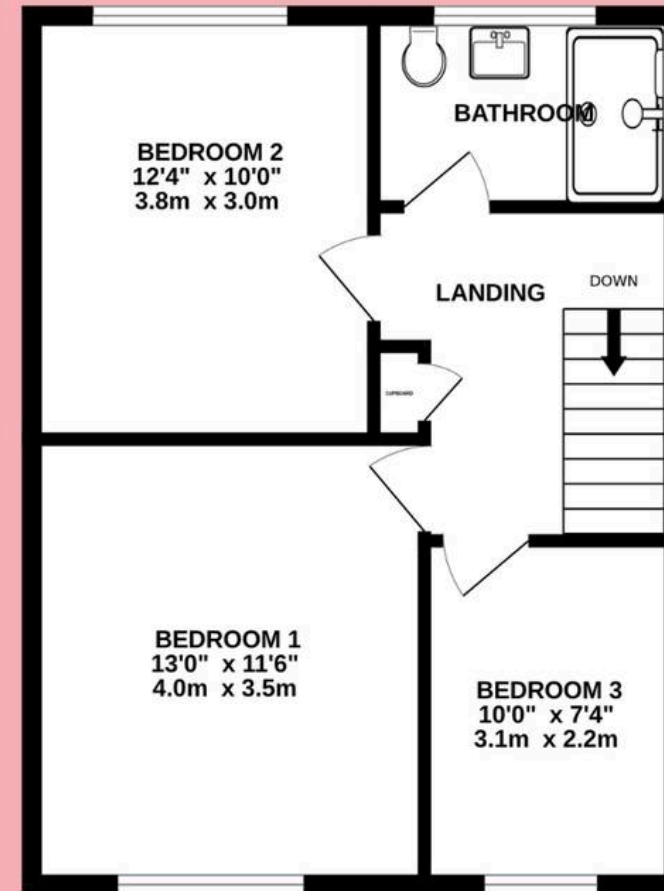
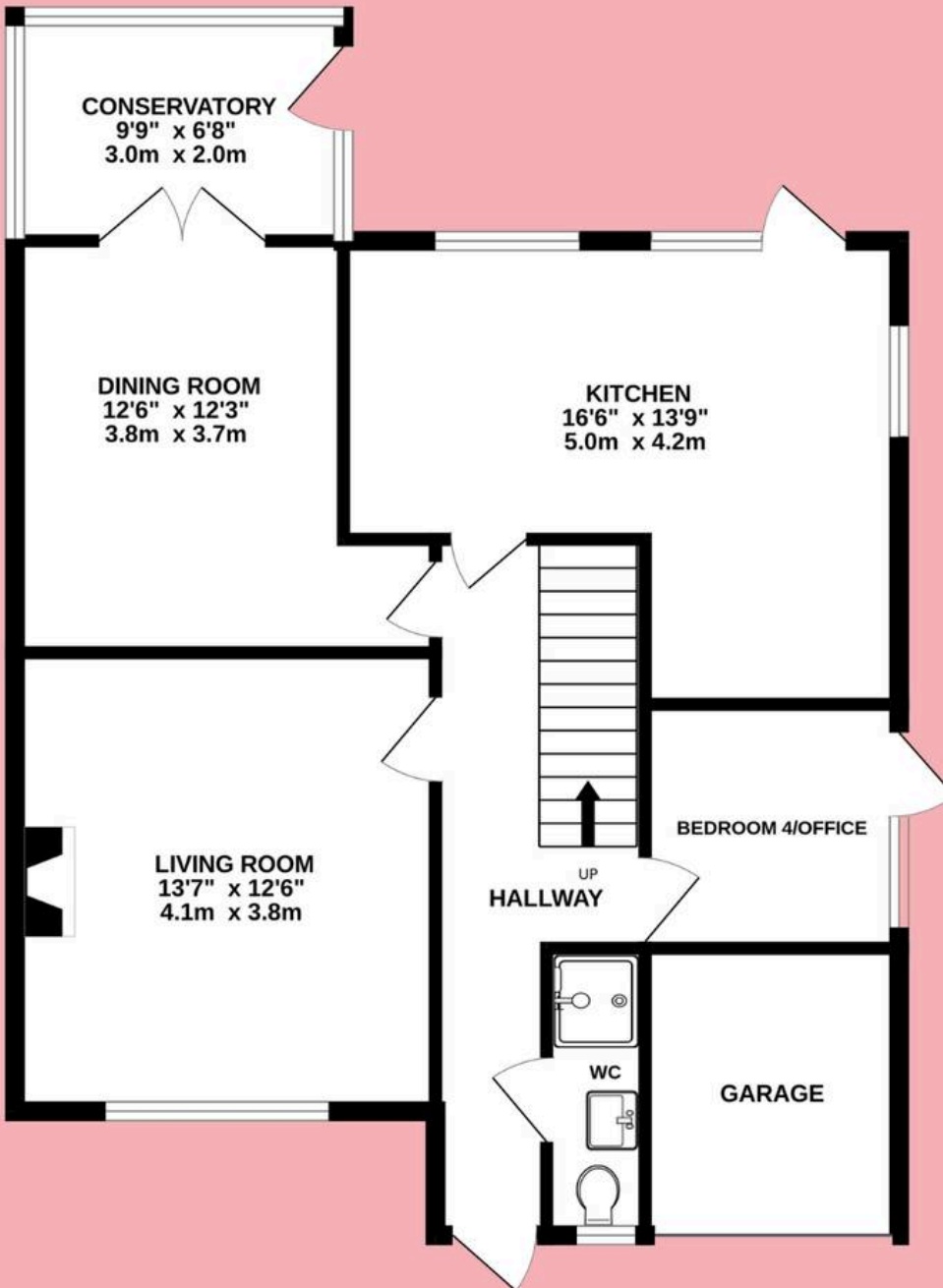
DRIVEWAY

3 Parking Spaces

Large Private Driveway







Burgin Close, Foston

Approx Internal area: 1266.91sq ft/ 117.7 m



David Grace Estate Agents

71 High Street, Grantham - NG31 6NR

01476 833833 • sell@davidgrace.co.uk • www.davidgrace.co.uk

DavidGrace