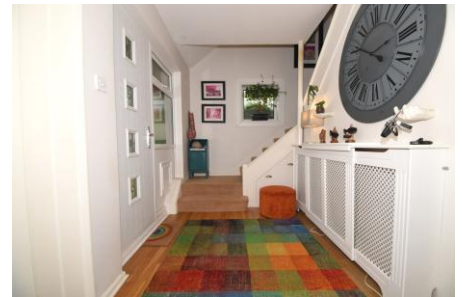


Alvara Road, Alverstoke,
Gosport, Hampshire, PO12 2HY

£600,000



Detached Residence
Three Reception Rooms
Utility Area

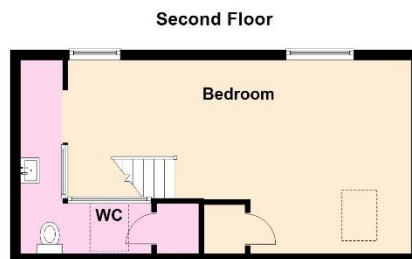
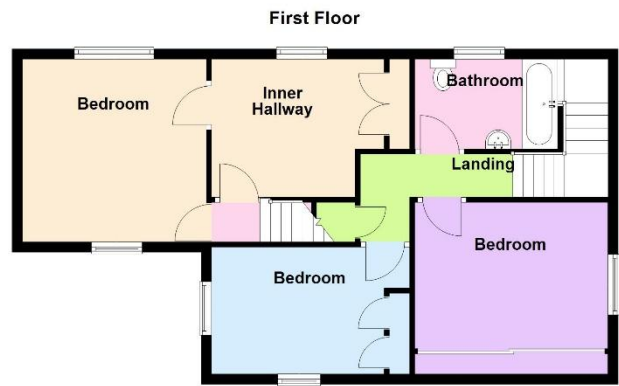
First Floor Family Bathroom
Bay House School Catchment

Four Bedrooms
Cloakroom
Main Bedroom With WC & Hand Basin Area
Garage & Driveway
Popular Residential Location

023 9258 5588

6 Stokesway, Stoke Road, Gosport, Hants, PO12 1PE
Email: office@dimon-estate-agents.co.uk

To view all our properties visit:
www.GosportProperty.com



SELLING YOUR OWN PROPERTY IN GOSPORT?
 WE ARE A FAMILY RUN BUSINESS SELLING HOMES IN GOSPORT FOR 55 YEARS
 AND WOULD WELCOME THE OPPORTUNITY TO BE CHOSEN AS YOUR ESTATE AGENT

Entrance Hall	Composite front door and double glazed window, stairs to first floor, radiator, timber flooring.
Cloakroom	With W.C., vanity hand basin, PVCu double glazed window, tiled floor, radiator.
Lounge	25'5" (7.75m) x 11'8" (3.56m) widening to 16'7" (5.05m) into bay, PVCu double glazed window and patio door to garden, 2 radiators, coved ceiling, Georgian style glazed French doors to:
Dining Room	11'1" (3.38m) x 8'8" (2.64m) PVCu double glazed window, radiator, timber flooring, coved ceiling, Georgian style glazed door to:
Study / Bedroom 5	11'10" (3.61m) x 8'3" (2.51m) PVCu double glazed windows and door to garden, timber flooring, radiator, coved ceiling.
Kitchen	11'7" (3.53m) Plus Recess x 12'5" (3.78m) widening to 1'10" (4.22m), Single drainer stainless steel sink unit, wall and base cupboards with worksurface over, gas cooker point, breakfast bar, 2 PVCu double glazed windows, glass wall, PVCu double glazed door to utility, plumbing for dishwasher, space for fridge/freezer, ceramic tiled floor, coved ceiling, tiled splashbacks, understairs cupboard.
Utility Room	15'1" (4.6m) x 5'11" (1.8m) Glass block wall, ceramic tiled floor, wall and base cupboards, plumbing for washing machine, space for dryer, space for fridge, door to:
Rear Lobby	6'11" (2.11m) x 5'8" (1.73m) PVCu double glazed door and window, glass block wall, ceramic tiled floor.
ON THE 1ST FLOOR	
Landing	Storage cupboard.
Bedroom 2	12'5" (3.78m) x 9'6" (2.9m) PVCu double glazed window, radiator, coved ceiling, fitted wardrobes with sliding doors.
Bedroom 3	11'9" (3.58m) x 11'10" (3.61m) 2 PVCu double glazed windows, radiator, coved ceiling.
Bedroom 4	10'5" (3.18m) To Wardrobe x 8'7" (2.62m) 2 PVCu double glazed windows, built in cupboards.
Bathroom	9'2" (2.79m) x 5'9" (1.75m) Panelled bath, vanity hand basin, low level W.C., PVCu double glazed window, ceramic tiled walls and floor, radiator.
Inner Hall	10'7" (3.23m) x 9'1" (2.77m) PVCu double glazed window, door and staircase leading to 2nd floor, radiator, built in cupboard, potential to use as a study area.

ON THE 2ND FLOOR

Bedroom 1

2 PVCu double glazed windows, double radiators, built in cupboard, roof window, glass block wall with area with W.C. and hand basin.

OUTSIDE

Front & Side Gardens

Lawned areas with shrubs and trees.

Rear Garden

Patio area and lawn.

Garage

With hardstanding in front.

Services

We understand that this property is connected to mains gas, electric, water and sewage.

Tenure

Freehold.

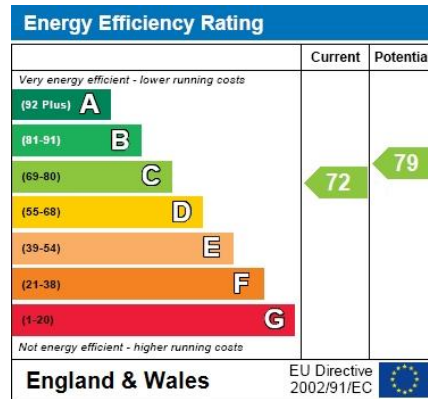
Council Tax

Band F.

Property Information

For information on broadband speed and mobile phone coverage for this property visit: <https://checker.ofcom.org.uk>
For flood risk information visit: <https://www.gov.uk/check-long-term-flood-risk>





Full Energy Performance Certificate
available upon request

Appointment		
Date:	Time:	Person Meeting:
Viewing Notes		

These particulars, whilst believed to be accurate, are set out as a general outline for guidance and do not constitute any part of an offer or contract. Please note we have not tested any apparatus, fixtures, fittings, or services. Interested parties must undertake their own investigation into the working order of these items.

All measurements are approximate. Floor Plans are obtained from a third party and may contain inaccuracies. Photographs are for guidance only and may change over the course of marketing. Information provided on lease terms, maintenance and ground rent have been provided by the vendor and you should ask your legal representative to confirm this information before exchanging contracts.