



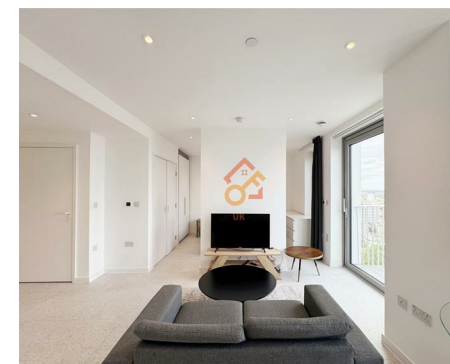
Let **UK** Home

1 Bedrooms

Flat - Studio

Located in London

£2,400 Per Month



info@letukhome.co.uk

<https://www.letukhome.co.uk/>

01795 358 886



5 Tapestry Way London

E1 2FR



Let UK Home are excited to offer this spectacular studio apartment in the heart of Jacquard Point part of the Silk District.

The flat comprises a spacious open kitchen with a stylishly attached dining area, a magnificent living room leading to a private balcony, one bright bedroom with built-in wardrobes and one modern bathroom. A virtual viewing is provided.

The residents of this development will enjoy amenities including concierge service, gym, spinning room, screening room and communal terrace, flexible and designed work and study space.

The apartment is surrounded by a number of prestigious universities, particularly just a short walk to Queen Mary University of London's Whitechapel campus and main campus, and ten world-renowned universities, including University College London, King's College London, and Central Saint Martins, can also be reached quickly.

The famous Whitechapel Gallery, the bustling Brick Lane Market and the enduring Columbia Road Flower Market are all within walking distance. Shoreditch's fashion boutiques, coffee shops, alley food, etc. are all within easy reach.

Just a street away from Whitechapel Underground Station, this development has access to the Elizabeth Line, Hammersmith & City, and Overground. It provides quick connections to major transport hubs including Victoria Station, King's Cross St. Pancras Station, Paddington Station, and Stratford International, making it a highly accessible location.

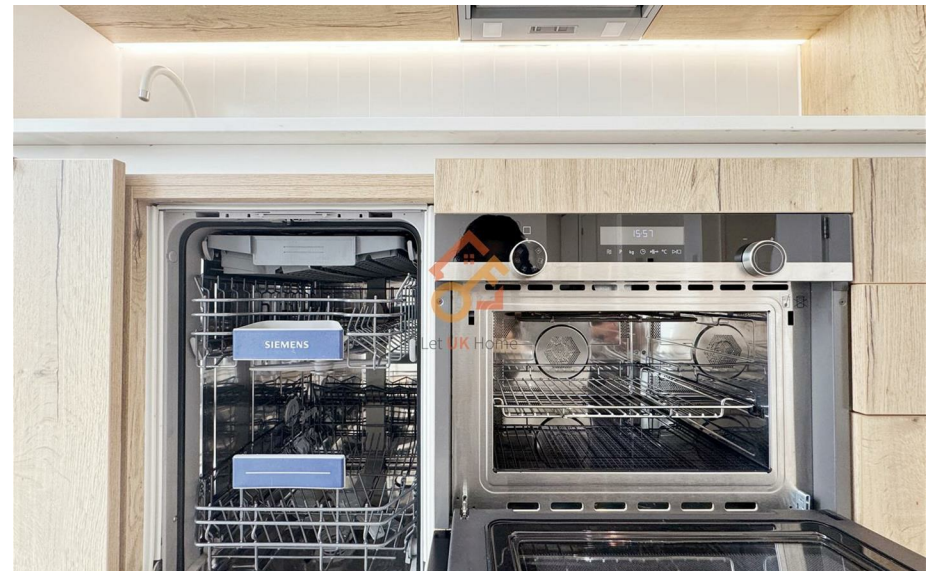
5 Tapestry Way London

£2,400 Per Month



- 20th Floor
- 24h Security
- Cinema & Game Room
- Virtual Viewing Available

- Concierge Service
- The Gym
- Co-working Space
- EPC Rating: B





Let **UK** Home

3F 2 Eastbourne Terrace
Paddington
London
W2 6LG

01795 358 886

info@letukhome.co.uk

THE JACQUARD

Studio
Twentieth Floor
Price: POA

Available

DIMS	M	FT
LIVING / KITCHEN / DINING	4.17M X 14.00M	
BEDROOM	4.17M X 9.00M	
TOTAL INTERNAL AREA	39 SQ M	
BALCONY	1.62M X 10.00M	
TOTAL AREA	44 SQ M	



Council Tax Band: D

Local Authority:

Agents Note: Whilst every care has been taken to prepare these particulars, they are for guidance purposes only. All measurements are approximate and are for general guidance purposes only and whilst every care has been taken to ensure their accuracy, they should not be relied upon and potential buyers/tenants are advised to recheck the measurements.

Energy Efficiency Rating		Current	Potential
Very energy efficient - lower running costs			
(92 plus) A			
(81-91) B			
(69-80) C		83	83
(55-68) D			
(39-54) E			
(21-38) F			
(1-20) G			
Not energy efficient - higher running costs			
England & Wales		EU Directive 2002/91/EC	

<https://www.letukhome.co.uk/>