

THE GLENCARSE

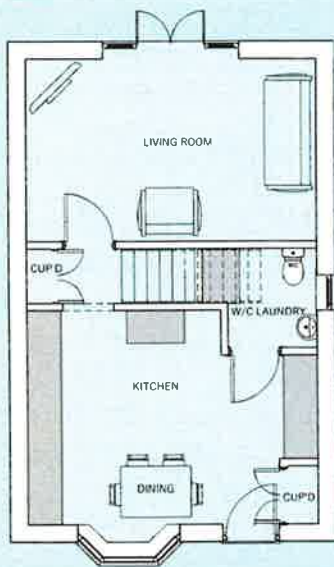


3 Bedroom Semi Detached House

The Glencarse is a three bedroom home to suit both couples and young families and is perfect for first time buyers stepping on to the housing ladder.

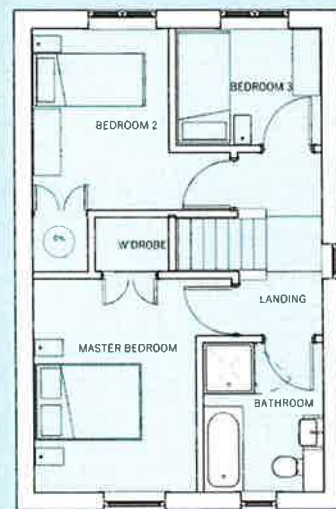
Enter into the generous sized dining kitchen with the laundry room and guest cloakroom leading off, before heading into the living room with French doors giving access to the rear garden.

The first floor landing leads to the master bedroom with built in wardrobe, whilst two further bedrooms and family bathroom having separate shower cubicle complete the accommodation.



Ground Floor

Kitchen & Dining	5135 x 3815 mm max
	16' 10" x 12' 6"
Living Room	5135 x 3250 mm
	16' 10" x 10' 7"
Laundry Room	2035 x 1800 mm max
	6' 8" x 5' 11"



First Floor

Master Bedroom	2885 x 3815 mm max (exc. wardrobe)
	9' 5" x 12' 6"
Bedroom 2	2435 x 3250 mm
	8' 0" x 10' 7"
Bedroom 3	2600 x 2100 mm
	8' 6" x 6' 10"
Bathroom	2150 x 2665 mm
	7' 0" x 8' 8"



www.broadgatehomes.com

This image is from an imaginary viewpoint within an open space area. Its purpose is to give a feel for the development, not an accurate description of an individual property. It shows a typical Broadgate home of this type, but external materials and landscaping may vary throughout the development and from site to site. Certain windows are subject to plot position on site. Properties may also be built handed (mirror image).

The floor plans depict a typical layout of this housetype. All dimensions are + or - 50mm and floor plans are not shown to scale. For exact plot specification, details of external and internal finishes, dimensions and floor plan differences always consult your Sales Negotiator. WS24/923/GC

