



## Biggerstaff Street, N4

### £400,000

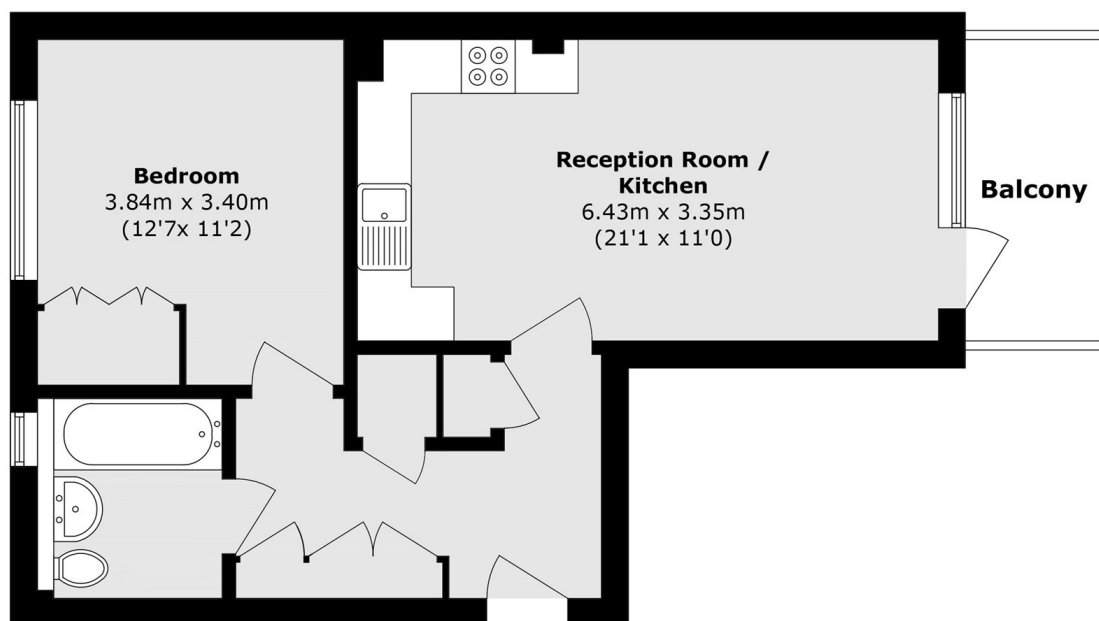
Located within a modern purpose-built building, this one-bedroom apartment features a fully fitted kitchen, a private balcony, and a large double bedroom.

Biggerstaff Street is ideally located close to a variety of shops and the open green spaces of Finsbury Park, with Finsbury Park station nearby offering Piccadilly and Victoria line services, as well as National Rail connections to the City.

### Features

- Purpose Built
- One Double Bedroom
- Close to Transport
- Great Amenities
- Private Balcony
- Bike Storage

# Biggerstaff Street, London, N4



Total area (approx.): 51.4 sq. m (553.2 sq. ft)

Balcony area (approx.): 5.0 sq. m ( 53.8 sq. ft)