



Horatio Apartments, 2 Graphite Square

, LONDON SE11 5EE

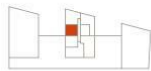
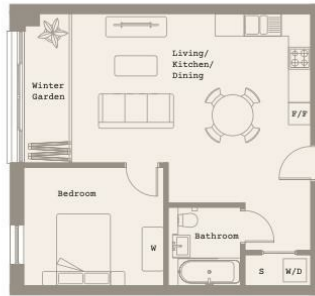
- Vauxhall/Nine Elms Station
- Landscaped podium garden with seating areas and children's play space
- Secure entry system and lift access
- 24-hour concierge service
- Beautifully designed communal public spaces
- EPC-B

£2,850 Per Month



Local Authority
 Council Tax Band **New Build**
 EPC Rating **B**

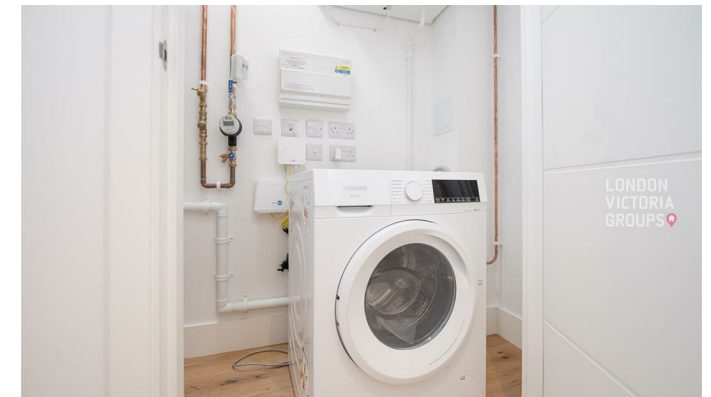
**THE RESIDENCES
 B2 SERIES (FLOORS 6-11)**



Levels 6-11



LIVING/KITCHEN/DINING	21'1 x 13'5	6.43m x 4.08m	INTERNAL	52m ² /562ft ²
BEDROOM	12'7 x 10'6	3.83m x 3.19m	WINTER GARDEN	5m ² /55ft ²
			TOTAL	57m²/617ft²



London Office Office

Spaces Victoria, 25 Wilton Road, Pimlico,
 London, SW1V 1LW

Contact

020 3084 3094
XL@londonvictoriagroups.co.uk
www.londonvictoriagroups.co.uk

Agents Note: Whilst every care has been taken to prepare these particulars, they are for guidance purposes only. All measurements are approximate and for general guidance purposes only and whilst every care has been taken to ensure accuracy, they should not be relied upon and potential buyers/tenants are advised to recheck the measurements.