

Castles

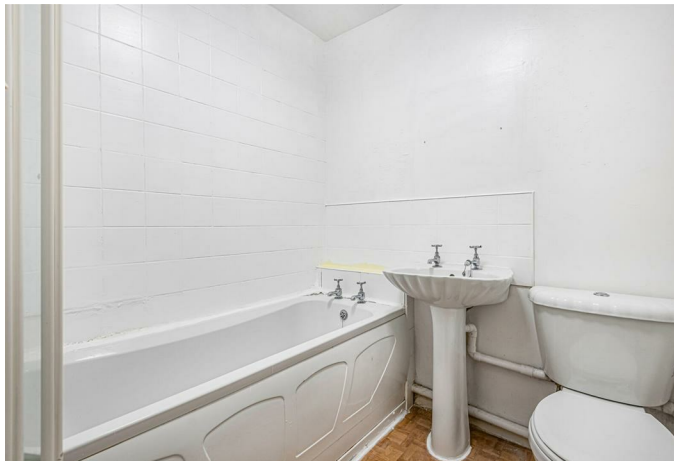
OFFERS IN EXCESS OF
£199,950
Charlton Road
London, N9 8UL

PreLet
FURNITURE
landlord furniture
&
appliances
www.prelet.co.uk

PROPERTY SUMMARY

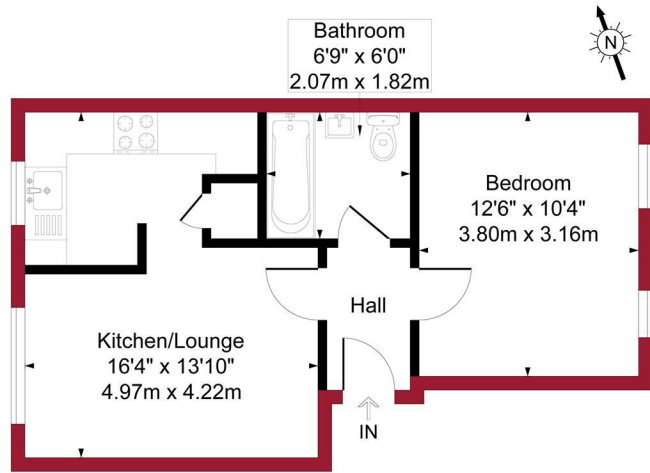
Castles are delighted to offer for sale this ground floor purpose built one bedroom flat situated on the Nightingale Estate N9. The property comprises of Reception one, kitchen, bathroom and bedroom. It also has features to include, 153 year lease, double glazing and is offered for sale on a chain free basis.



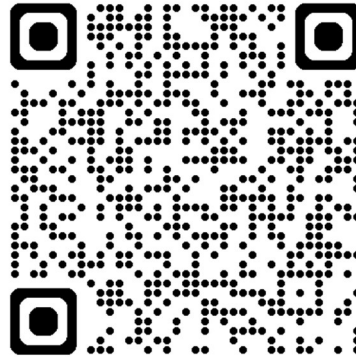


Verity Court, Charlton Road, London, N9

Approximate Gross Internal Area = 418 sq ft / 38.7 sq m



For a guide to the area
please scan this code for
more information



Flat

Leasehold

Council:

Council Tax Band: B

Agents Note: Whilst every care has been taken to prepare these particulars, they are for guidance purposes only. All measurements are approximate and are for general guidance purposes only and whilst every care has been taken to ensure their accuracy, they should not be relied upon and potential buyers/tenants are advised to recheck the measurements



OFFICE ADDRESS

438 Hertford Road
Edmonton
London
N9 8AB

OFFICE DETAILS

020 8804 8123
edmonton@castles.london
<https://www.castles.london/>

