

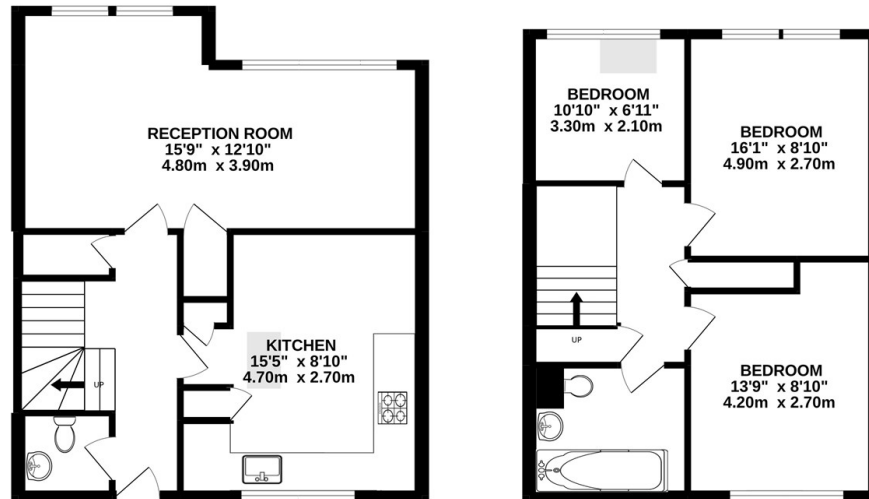


101 Badric Court, Yelverton Road, London, SW11 3SP

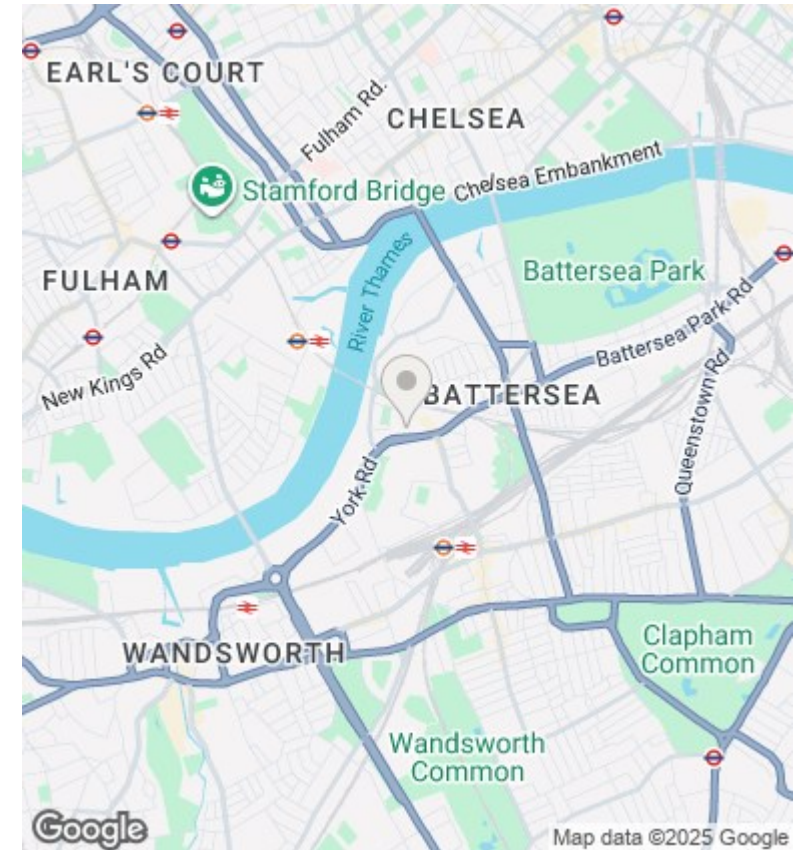
£2,650 PCM

- Well Presented
- Additional WC
- Short Walk to Clapham Junction
- Available Furnished
- Separate Living Room
- Three Double Bedrooms
- Spread Over Two Floors
- Large Kitchen
- Wandsworth Council Tax Band C
- Wood Floors & Double Glazing

3 BEDROOM FLAT



Whilst every attempt has been made to ensure the accuracy of the floorplan contained here, measurements of doors, windows, rooms and any other items are approximate and no responsibility is taken for any error, omission or mis-statement. This plan is for illustrative purposes only and should be used as such by any prospective purchaser. The services, systems and appliances shown have not been tested and no guarantee as to their operability or efficiency can be given.
Made with Metropix ©2022



Directions

Viewings

Viewings by arrangement only. Call 020 7585 2761 to make an appointment.

Council Tax Band

C

EPC Rating:

C

Energy Efficiency Rating		
	Current	Potential
Very energy efficient - lower running costs		
(92 plus) A		
(81-91) B		
(69-80) C	78	82
(55-68) D		
(39-54) E		
(21-38) F		
(1-20) G		
Not energy efficient - higher running costs		
England & Wales	EU Directive 2002/91/EC	