

7 Horton Road, Fallowfield, Manchester, M14 7QB

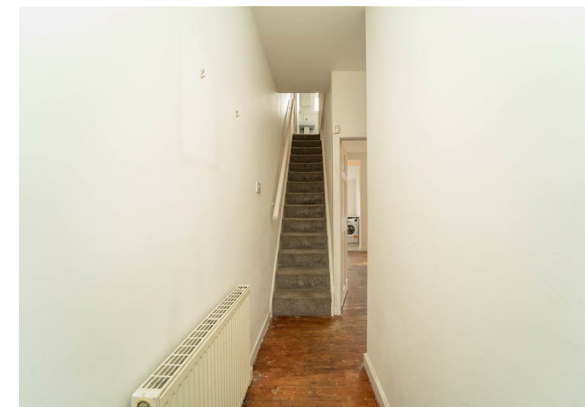


**JP&Brimelow**  
ESTATE AGENTS

# Offers In The Region Of £240,000

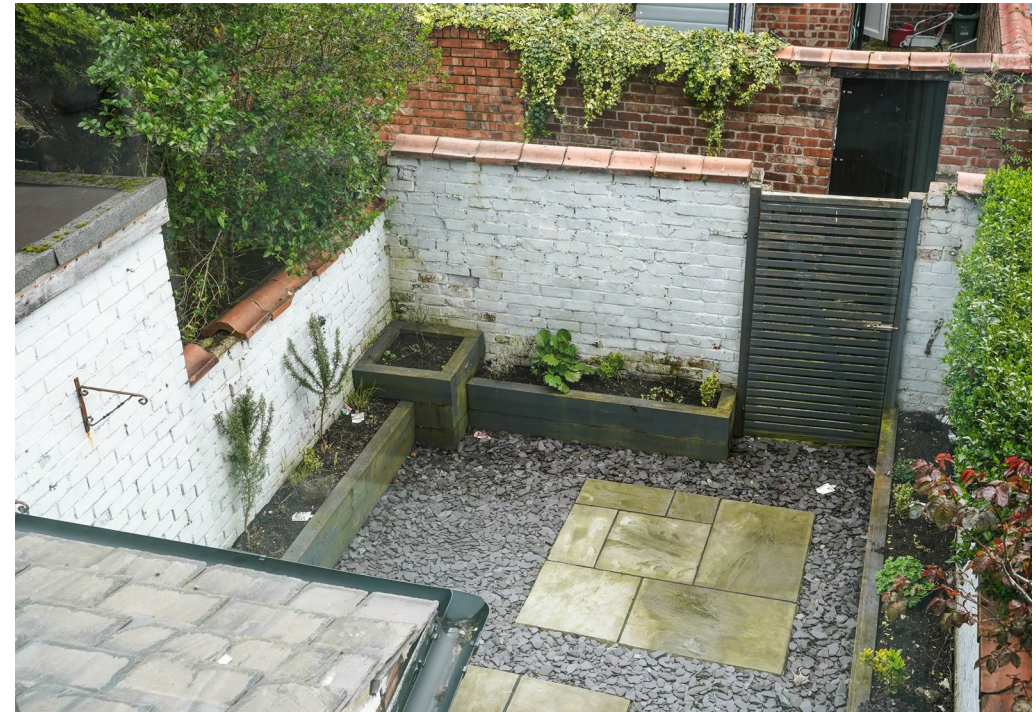
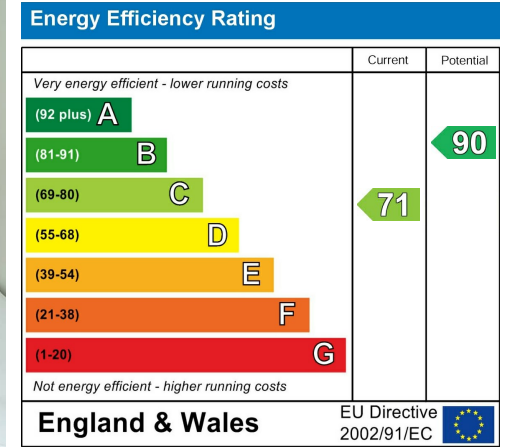


\*\*\*VIDEO TOUR AVAILABLE\*\*\* A delightful TWO DOUBLE BEDROOM, period mid-terrace property located off Rosendale Road, in Fallowfield. Ideally positioned near the Fallowfield Triangle, which offers cafés, shops, and convenience stores. Just a short drive from Manchester city centre, the property boasts excellent transport links via nearby bus routes, and is close to Alexandra Park, offering various sports activities, Hough End Leisure Centre toward West Didsbury, and Claremont Primary School. The well-designed layout includes an entrance hall, a lounge to the front aspect, a good-sized dining room that leads to the fitted kitchen, with access to the rear courtyard garden, completing the ground floor. On the first floor, the landing provides access to two double bedrooms and a three-piece bathroom suite. Additional features include gas fired central heating and enclosed front and rear courtyard-style gardens.



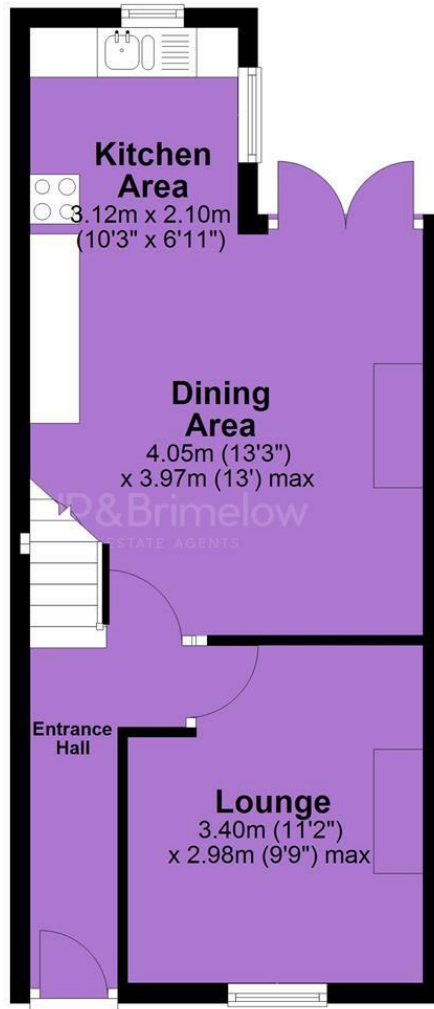


## EPC Chart

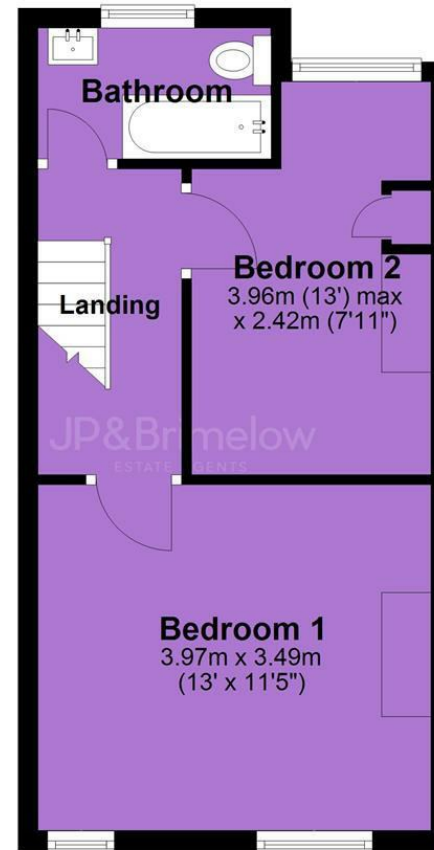


Tenure: **Freehold** Council Tax Band: **A**

## Ground Floor



## First Floor



JP & Brimelow Estate Agents Ltd  
430 Barlow Moor Road, Manchester, M21 8AD  
Tel: 0161 8822233  
E: sales@jpbrimelow.co.uk www.jpandbrimelow.co.uk



**JP&Brimelow**  
ESTATE AGENTS

NOTICE: JP & Brimelow Estate Agents Ltd for themselves and for the vendors or lessors of this property whose agents they are give notice that:

- (i) the particulars are set out as a general outline only for the guidance of intending purchasers or lessees, and do not constitute, nor constitute part of, an offer or contract;
- (ii) all descriptions, dimensions, references to the condition and necessary permissions for use and occupation, and other details are given in good faith and are believed to be correct but any intending purchasers or tenants should not rely on them as statements or representations of fact but must satisfy themselves by inspection or otherwise as to the correctness of each of them;
- (iii) no person in the employment of JP & Brimelow Estate Agents Ltd has any authority to make or give any representation or warranty whatever in relation to this property.

jpandbrimelowstateagents

@jpandbrimelow