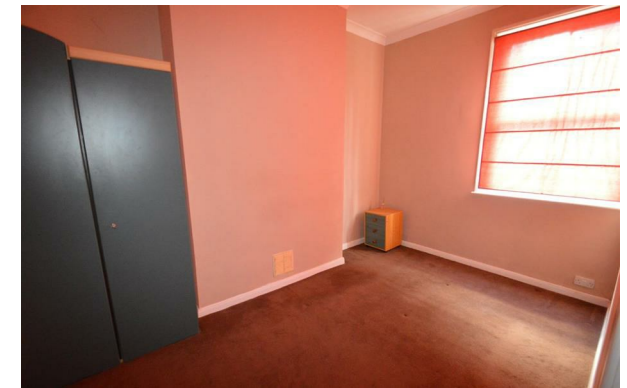




Willoughby Road, Ipswich, IP2 8AP

£695 PCM

- First Floor Flat
- Lounge/Diner
- Close To Train Station
- High Ceilings
- Kitchen
- Off Road Parking
- Electric Heating
- Close To Town Centre



Directions

NO PETS - NO HB FOR PRESENT. IF DIFFICULT TO RENT OUT THEN LL MAY CHANGE MIND ABOUT HB

Viewings

Viewings by arrangement only. Call 01473 221 399 to make an appointment.

EPC Rating:

E

