

CHARMILL

RESIDENTIAL



Boydell Court, St John's Wood NW8
£1,300



Flat 30, Boydell Court St. Johns Wood Park, London, NW8 6NL

£1,300

A luxurious three double bedroom apartment available on a furnished/unfurnished basis within a gated purpose-built block in St John's Wood. The apartment, which is on the ground floor, comprises a principal bedroom with en-suite bathroom, two further double bedroom, family bathroom, fully fitted kitchen and a bright reception room. This superb flat is fully air conditioned and further benefits from a 24 hour porter. St John's Wood is one of the most sought-after residential areas in London, situated next to Regent's Park which offers a peaceful village atmosphere but yet only minutes from London's West End. The flat is conveniently located for the transport facilities at St John's Wood and Swiss Cottage Underground stations (Jubilee line).

Description



Situation

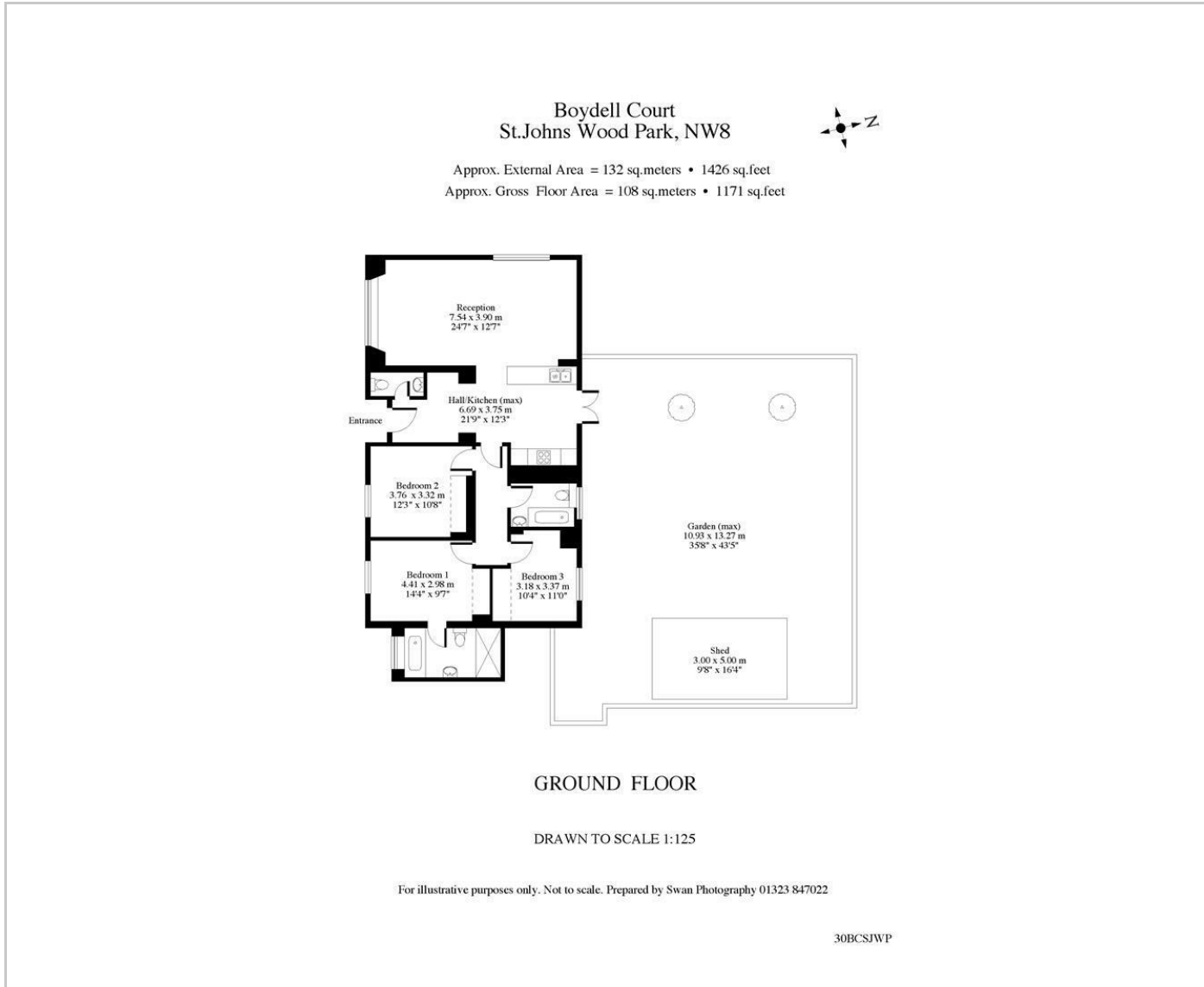


Not specified

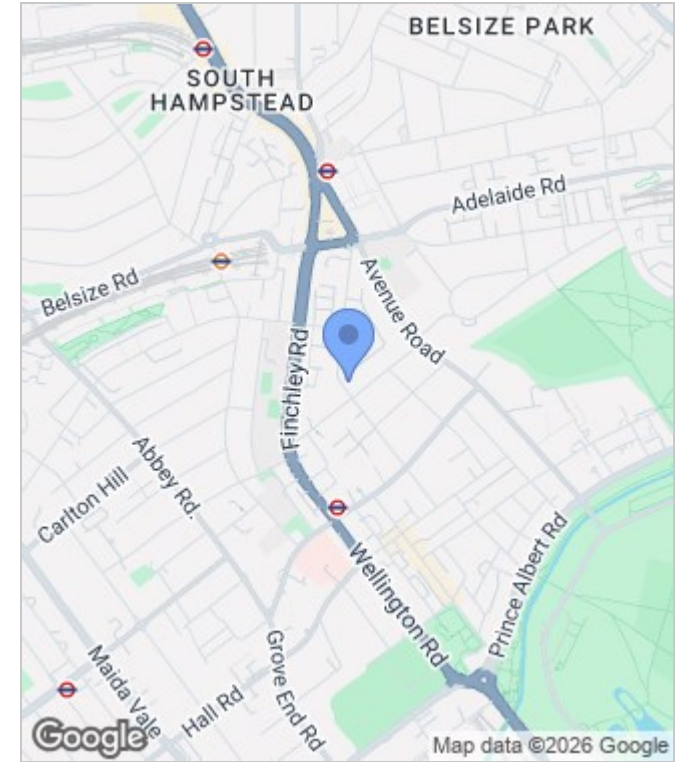
Council Tax Band: F

Available: 9th August 2026

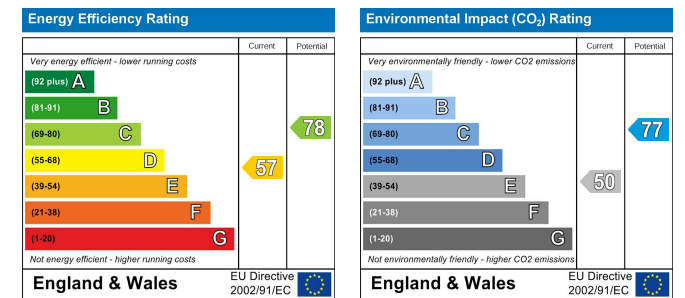
Floor Plans



Area Map



Energy Performance Graph



These particulars, whilst believed to be accurate are set out as a general outline only for guidance and do not constitute any part of an offer or contract. Intending purchasers should not rely on them as statements of representation of fact, but must satisfy themselves by inspection or otherwise as to their accuracy. No person in this firm's employment has the authority to make or give any representation or warranty in respect of the property.

