

155 Wandsworth Road London

£1,962 Per Week

An exceptional penthouse apartment offers an expansive living space and striking architectural design. This impressive home features a vast open-plan reception, dining and kitchen area, wrapped by curved floor-to-ceiling windows that floods the space with natural light and delivers far-reaching city views.

The property offers three generously proportioned bedrooms, including a substantial principal suite, complemented by a separate study. Finished in a contemporary style throughout, this unique apartment combines scale, light and outlook, creating a standout home in a prime high-rise setting.

With access to great onsite facilities including a concierge service, large winter garden, breathtaking roof terrace and gym and within close proximity to local amenities, parks, and transport links, this property is a must see!

Minimum contract: 12 months
Council tax band : Lambeth Council - F
Change of contract fee: £50 including VAT
Lift access
Holding Deposit - £1,962 (1 weeks rent, subject to agreed offer)

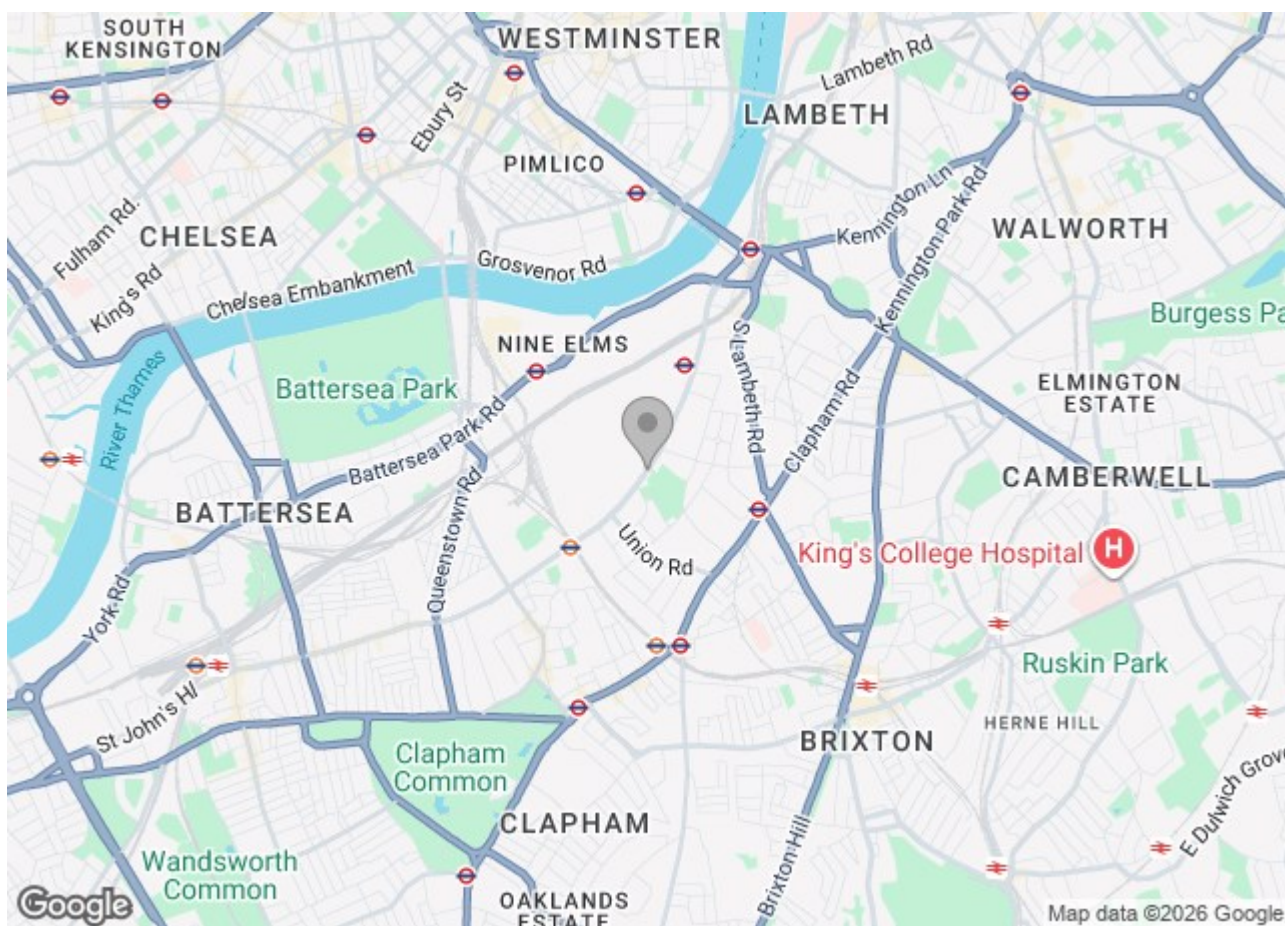
Electricity supply – Mains | Cold Water supply – Mains | Sewerage – Mains | Hot water, heating & comfort cooling – District Communal | Internet: FTTP

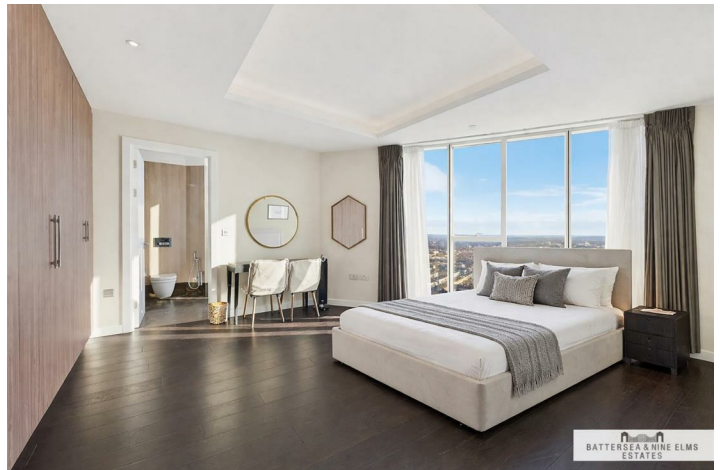
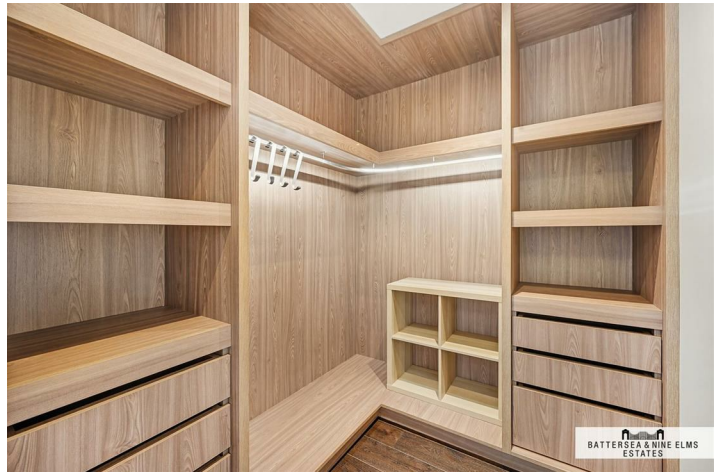
To check broadband and mobile phone coverage please visit Ofc

155 Wandsworth Road London

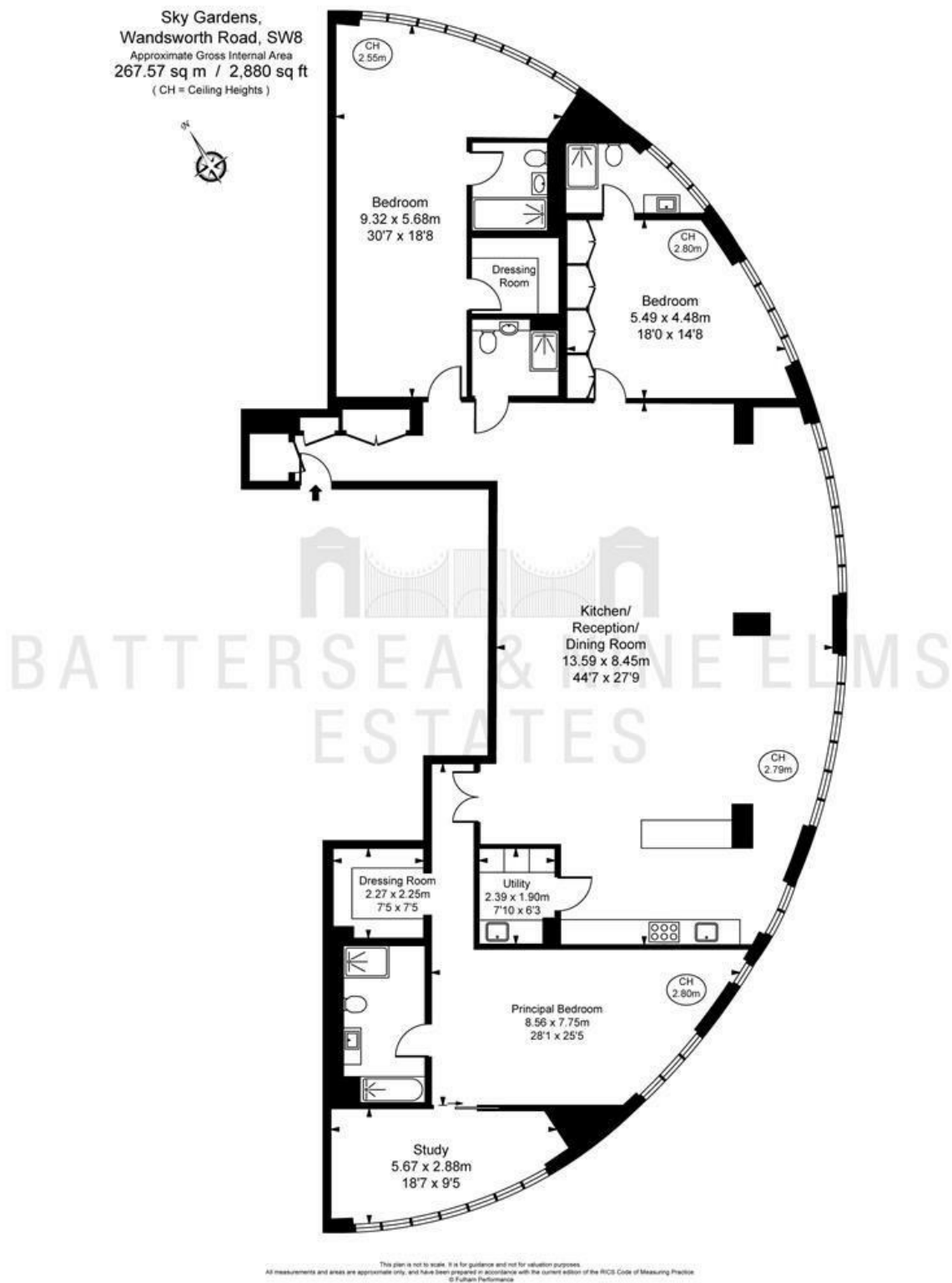


- 3 Bedrooms
- 3 Bathrooms
- Penthouse
- Study off main bedroom suite
- Communal roof terrace
- 24hr Concierge
- Residents gym





Floor Plan



These particulars, whilst believed to be accurate are set out as a general outline only for guidance and do not constitute any part of an offer or contract. Intending purchasers should not rely on them as statements of representation of fact, but must satisfy themselves by inspection or otherwise as to their accuracy. No person in this firm's employment has the authority to make or give any representation or warranty in respect of the property.

