

1 Globe Close - £1,575 PCM

Mildenhall Suffolk IP28 7FH

shires

Estate & Letting Agents



"Consistently providing outstanding service to our clients"

£1,575 PCM

The Property

This three bedroom house is located in the Market town of Mildenhall, just a short drive from both RAF Lakenheath & Mildenhall. The property is spacious and modern throughout and benefits from a utility room and en suite.

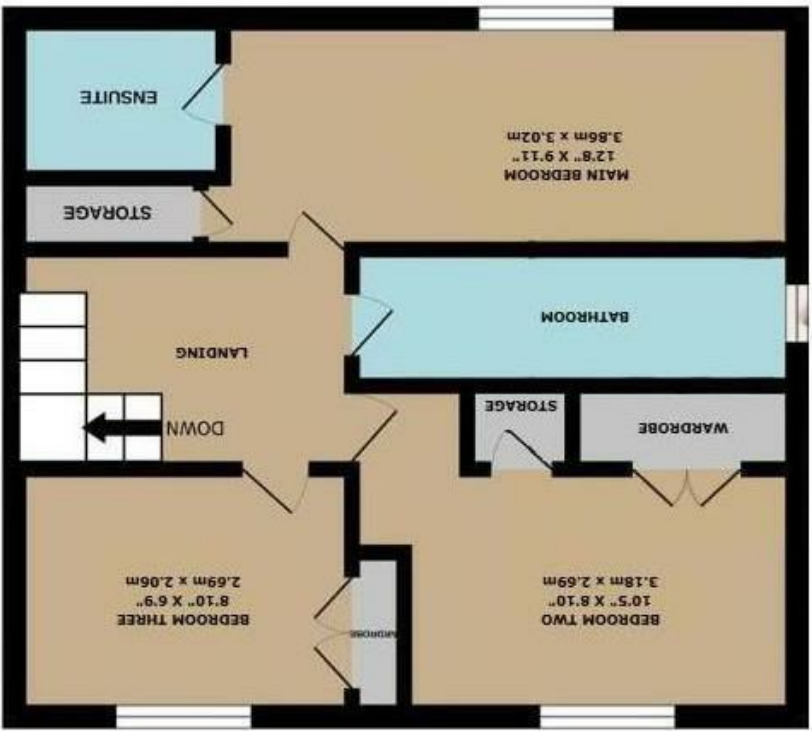
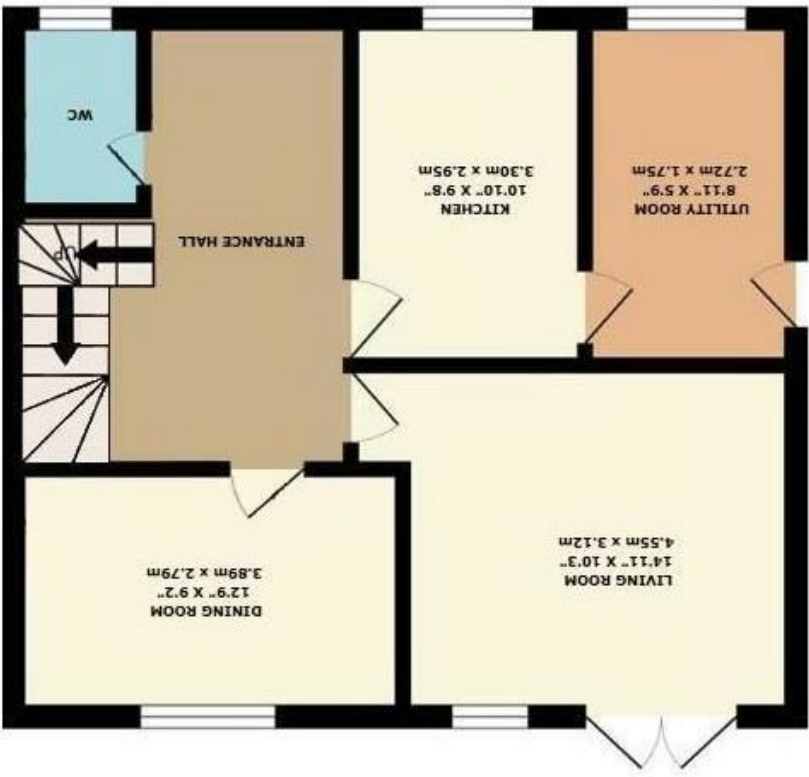
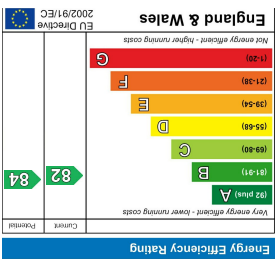
Features

- SEMI DETACHED HOUSE
- CLOSE TO RAF BASES
- 3 BEDROOMS
- GAS HEATING & ENERGY RATING - C
- MODERN KITCHEN
- APPROXIMATE SIZE - 1130 SQFT
- FAMILY BATHROOM, EN SUITE & CLOAKROOM
- COUNCIL TAX BAND - C
- PARKING & ENCLOSED REAR GARDEN
- AVAILABLE EARLY APRIL





These sales particulars have been produced as a general guide only and we would draw to your attention that we have not carried out a detailed Survey of the property nor have we tested services, appliances or specific fittings. Whilst measurements and statements given within the details are provided in good faith, their accuracy should not be relied upon. If there are any points about which you may be uncertain or would like further clarification, we would suggest that you telephone this office and speak to our staff who will endeavour to assist you.



4 New Street, Mildenhall, Suffolk, IP28 7EN
 T: 01638 712132
 E: mildenhall@shiresestateagents.co.uk

