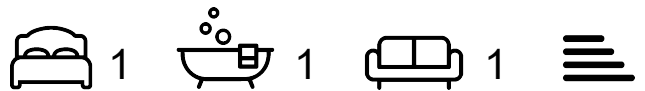




## Sorrel Drive

Kingsbury, B78 2PE

£895 Per Month



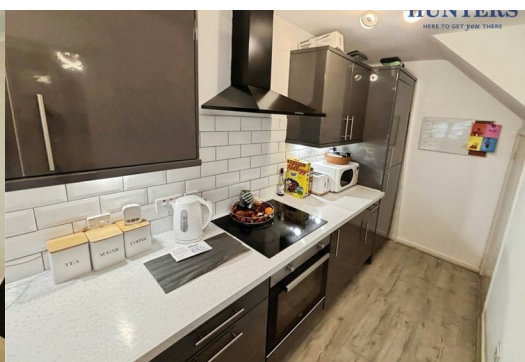
Nestled in the desirable Sorrel Drive, Kingsbury, this charming property offers a delightful blend of modern living and comfort.

The contemporary kitchen provides ample space for meal preparation and the comfortable living room is a welcoming space, ideal for relaxation after a long day.

The property boasts one spacious double bedroom with built in storage, ideal for restful nights and peaceful mornings as well as a modern bathroom featuring a convenient shower over the bath, ensuring both style and functionality.

For those with vehicles, the property offers ample parking for up to three cars.

Overall, this property on Sorrel Drive presents an excellent opportunity for anyone seeking a modern and comfortable living space in a well-connected area.



### Area Map



### Floor Plans



### Energy Efficiency Graph



These particulars are intended to give a fair and reliable description of the property but no responsibility for any inaccuracy or error can be accepted and do not constitute an offer or contract. We have not tested any services or appliances (including central heating if fitted) referred to in these particulars and the purchasers are advised to satisfy themselves as to the working order and condition. If a property is unoccupied at any time there may be reconnection charges for any switched off/disconnected or drained services or appliances - All measurements are approximate. **THINKING OF SELLING?** If you are thinking of selling your home or just curious to discover the value of your property, Hunters would be pleased to provide free, no obligation sales and marketing advice. Even if your home is outside the area covered by our local offices we can arrange a Market Appraisal through our national network of Hunters estate agents.