



Thurlow Road

Hampstead, NW3

Asking Price £1,200,000

Situated on the top floors (second & third) of this beautiful semi-detached period house, an outstanding two double bedroom, two bathroom duplex flat.

This fabulous apartment comprises a 19'8 x 13'1 reception room, kitchen with granite work surfaces and integrated appliances, 21'7 x 18'1 bedroom with built-in wardrobes, second double bedroom with a built in wardrobe, one bathroom, one shower room and eaves storage.

Thurlow Road is one of Hampstead's premier turnings, a desirable tree lined road located directly off Rosslyn Hill & Hampstead High Street offering a variety of restaurants, cafes, shops, amenities and transport links (Northern Line). The open acres of Hampstead Heath, ideal for leisurely walks, are also located just 0.3 miles away. Sole agent.

CHESTERTONS



Thurlow Road

Hampstead, NW3

- Top floor duplex flat
- 1,275 square feet including eaves storage
- 19'8 x 13'1 reception room
- Two double bedrooms
- One bathroom & one shower room
- Share of freehold & a long lease
- Premier address in Hampstead
- 300 feet to shops & restaurants
- 0.3 miles to Hampstead Heath



Tenure: Share of Freehold and a lease with 960 years remaining
Service Charge: £1,200 per annum
Ground Rent: £0
Local Authority: Camden
Council Tax Band: F

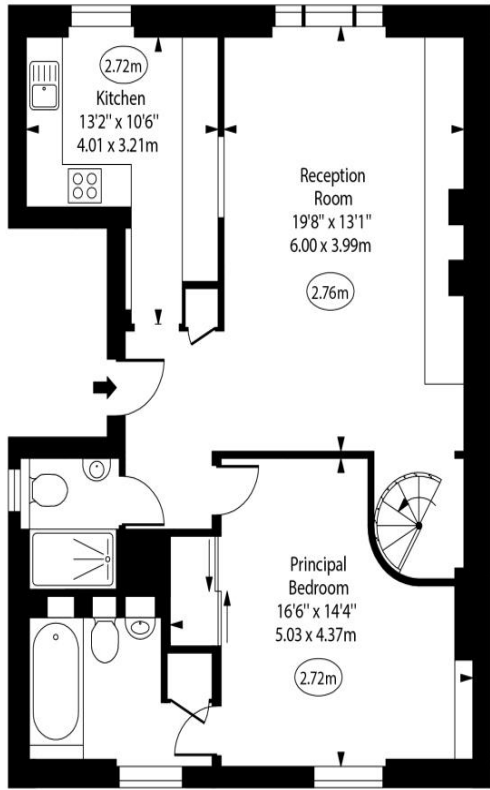
Energy Efficiency Rating		Current	Potential
Very energy efficient - lower running costs			
(92-100)	A		
(81-91)	B		
(69-80)	C		
(55-68)	D	65	65
(39-54)	E		
(21-38)	F		
(1-20)	G		
Not energy efficient - higher running costs			
England, Scotland & Wales		EU Directive 2002/91/EC	

Chestertons Hampstead Sales

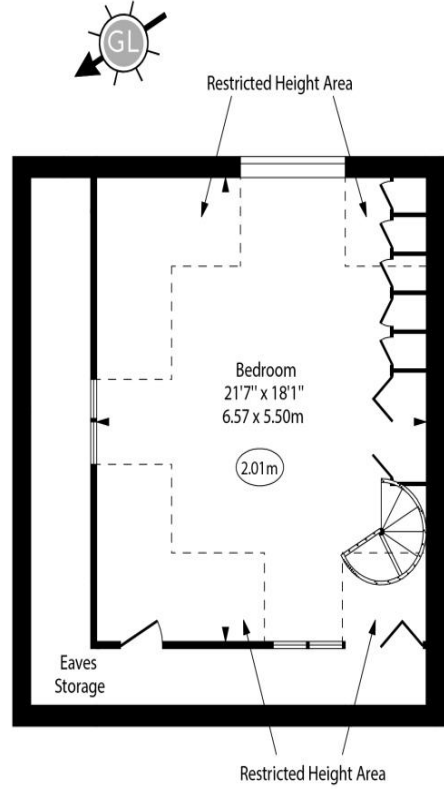
55-56 Hampstead High Street
 Hampstead
 NW3 1QH
 hampstead@chestertons.co.uk
 020 7794 3311
 chestertons.co.uk

Thurlow Road,
Hampstead, NW3

○ - Ceiling Height



Second Floor



Third Floor

Approx Gross Internal Area 988 Sq Ft - 91.79 Sq M

Approx. Floor Area Including Restricted Heights 1275 Sq Ft - 118.45 Sq M
(Including Eaves Storage)

For Illustration Purposes Only - Not To Scale
www.goldlens.co.uk
Prepared for Chestertons
Ref. No. 023864R

