



**POOLE
TOWNSEND**

Birchwood Drive, Ulverston
£300,000

4 2 3



Situated in the ever-popular Croftlands area of Ulverston, this extended property offers significantly improved accommodation including; hobbies room/office, a family lounge with double doors opening into the dining room where there is open access into the kitchen and separate access into the laundry and shower room. The first floor now offers 4 bedrooms and a larger sized bathroom.

There is off-road parking on a private driveway, an enclosed family friendly garden, a GCH system and and upvc DG throughout. The property is only a minutes walk away from the nearest bus stop and only a few minutes further away from Morrisons Daily, Spar, community centre, children's play area and Croftlands Nursery and Primary Schools.

Location

What3Words///thudding.automate.briefing

Description

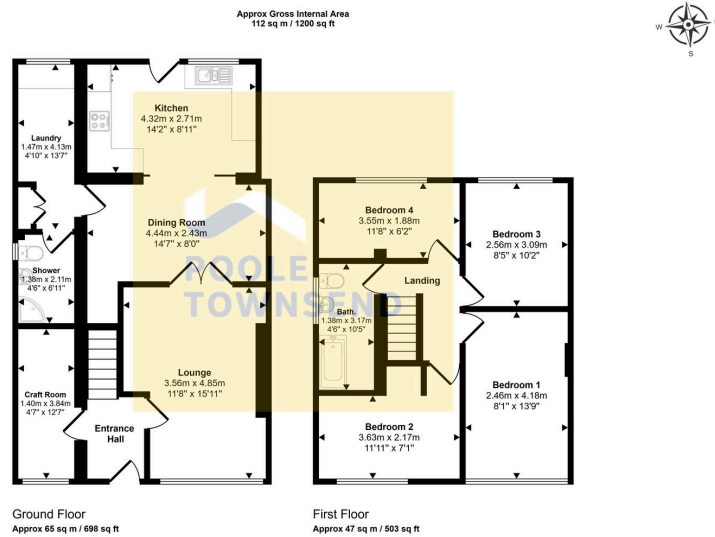
Tenure

Freehold.

Services

Mains gas, electricity, water and drainage.





- Spacious extended family home
- Great Location For Schools And amenities
- Lounge and separate dining room
- Well presented throughout
- Good sized kitchen
- Driveway parking
- 4 bedrooms
- Freehold
- Attractive garden to the rear
- Council tax band B



Visit us at
www.pooletownsend.co.uk
enquiries@pooletownsend.co.uk

We are open
 Monday – Friday 9.00 – 5.00
 Saturday 9.00 – 1.00

Barrow 01229 811811
 Ulverston 01229 588111
 Grange 015395 33316
 Kendal 01539 734455
 Milnthorpe 015395 62044