



## Brewhouse Yard, EC1V

£3,000 Per week

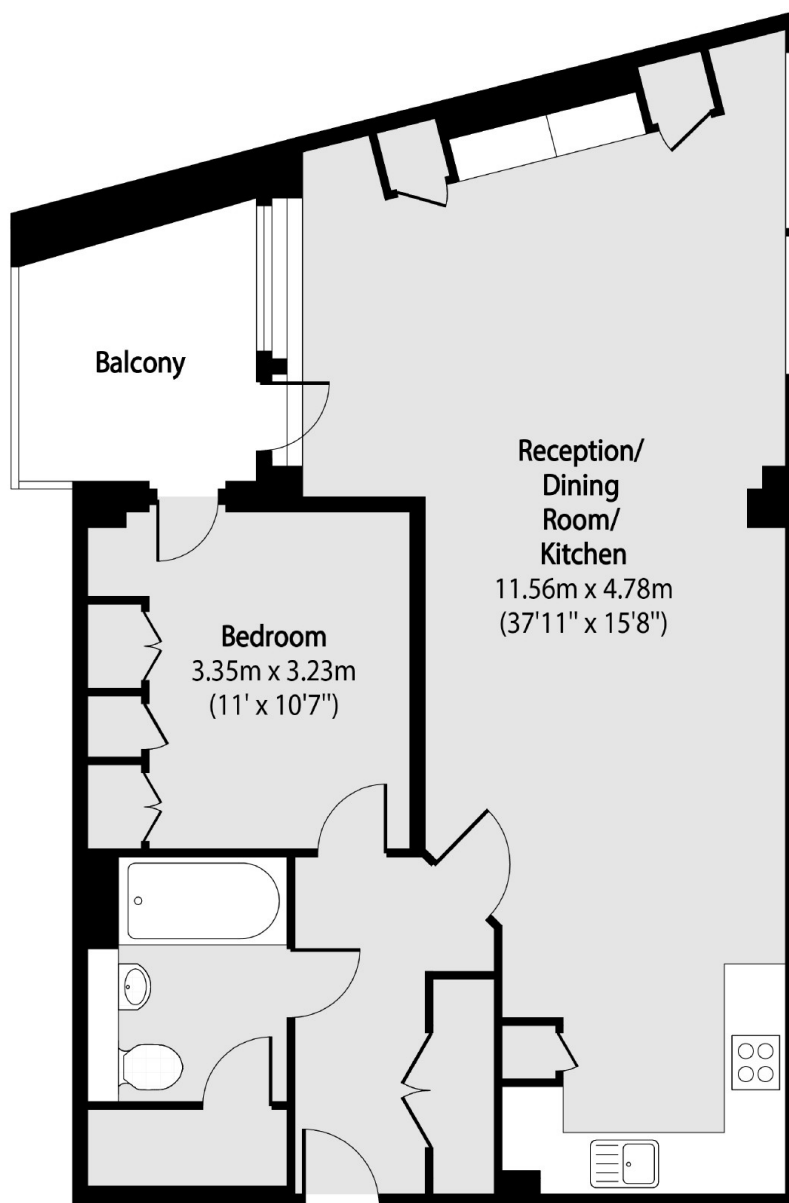
A large and unique one bedroom apartment with floor to ceiling windows and a separate guest sleeping area/study. The property has a large private terrace overlooking Brewery Square and has access to a 24hr concierge.

Brewhouse Yard is a secure development just off St John's Street with two local supermarkets and Farringdon and Barbican Underground stations less than half a mile away.

### Features

- One Bedroom
- Guest Sleeping Area/Study
- Large Balcony
- 24 Hour Concierge
- Bike Storage

# Brewhouse Yard, London, EC1V



Total area (approx): 66.98 sq m (721 sq. ft)

Balcony total area (approx): 5.85 sq m (63 sq. ft)