



# Kenley Close , Wickford, SS11 8XL Offers In The Region Of £375,000

Nestled in the quiet cul-de-sac of Kenley Close, Wickford. This well-presented and extended two-bedroom property offers generous living space and a practical layout, making it an ideal home for first-time buyers, small families, or those looking to downsize.

Upon entering, you are greeted by a spacious and bright living room that provides a warm and inviting atmosphere, ideal for both relaxation and entertaining. The extension enhances the living space, allowing for a versatile layout that can be tailored to your needs. The property boasts a ground floor wc and family bathroom, ensuring ample facilities for residents

The well-equipped kitchen leads to a utility area, complete with a downstairs WC, adding to the practicality of the home.

Externally, the home continues to impress with off-street parking and a garage, offering ample storage or secure parking.

Overall, this property combines space, practicality, and convenience, with the added benefit of its extended layout enhancing everyday living.

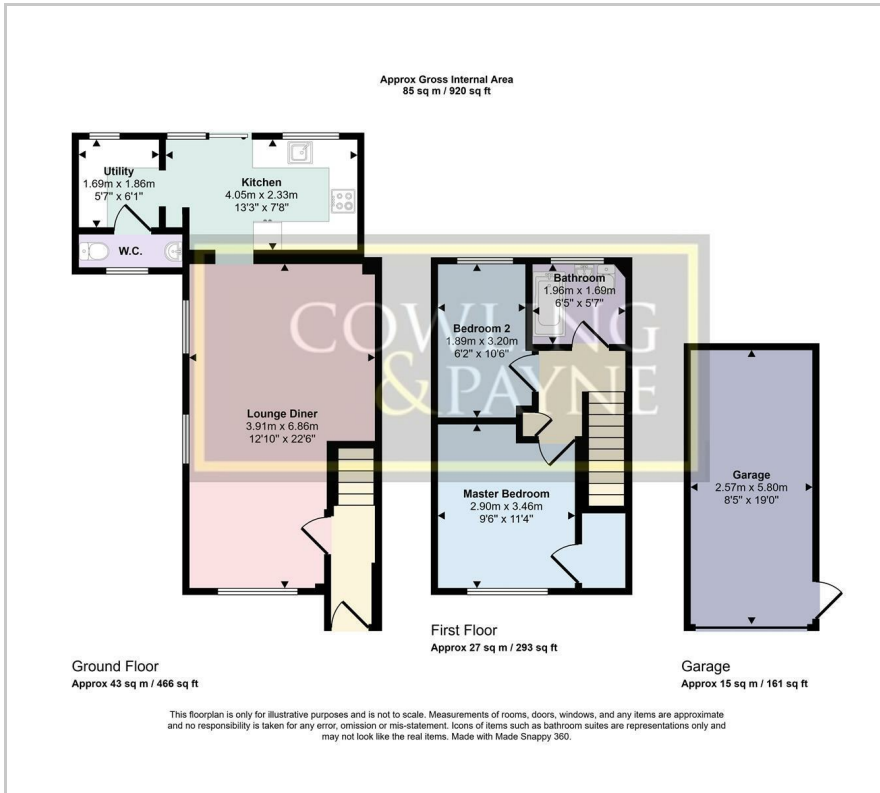
- OFFERS IN THE REGION OF £375,000
- EXTENDED TWO BEDROOM SEMI-DETACHED HOUSE
- DOWNSTAIRS WC
- OFF STREET PARKING
- GARAGE
- UTILITY ROOM
- QUIET CUL-DE-SAC LOCATION
- DOUBLE GLAZED UVPC WINDOWS
- COUNCIL TAX BAND - C - BASILDON
- ENERGY PERFORMANCE RATING - C

### Viewing

Please contact our Sales Office on 01268 730707 if you wish to arrange a viewing appointment for this property or require further information.



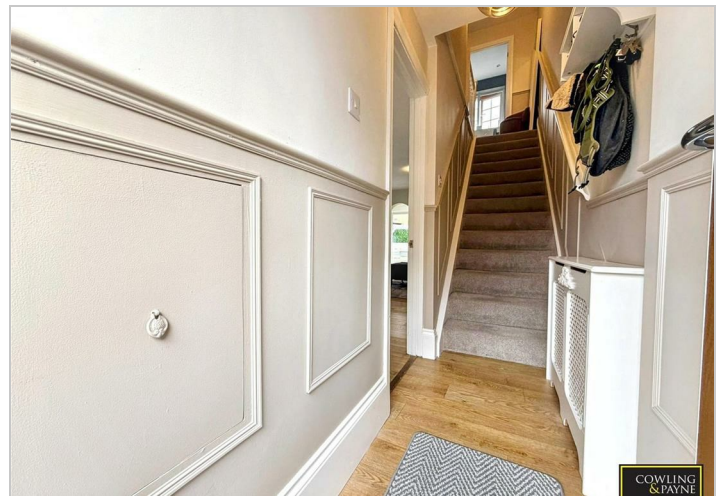
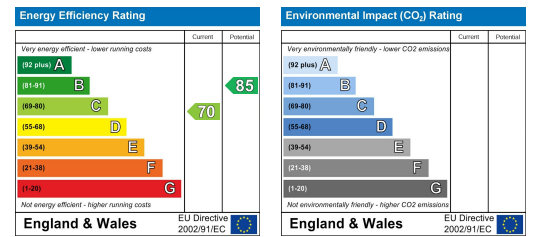
# Floor Plan



# Area Map



# Energy Efficiency Graph



These particulars, whilst believed to be accurate are set out as a general outline only for guidance and do not constitute any part of an offer or contract. Intending purchasers should not rely on them as statements of representation of fact, but must satisfy themselves by inspection or otherwise as to their accuracy. No person in this firm's employment has the authority to make or give any representation or warranty in respect of the property.