



Elm Park Gardens, SW10

£4,400 Per week

Spectacular triple-aspect two bedroom, two bathroom apartment on Elm Park Gardens with steam room. Fully modernised apartment with wooden floors throughout that has been recently fully renovated and has previously been owner-occupied.

Elm Park Gardens is close to the Fulham Beach area of Chelsea with an array of shops and cafés including Marks and Spencer food, Sophie's Steak House and Josephine's.

Features

- Two Double Bedrooms
- Two Bathrooms
- Triple Aspect
- Steam Room
- Communal Garden Access
- Wooden Floors Throughout



Elm Park Gardens, SW10

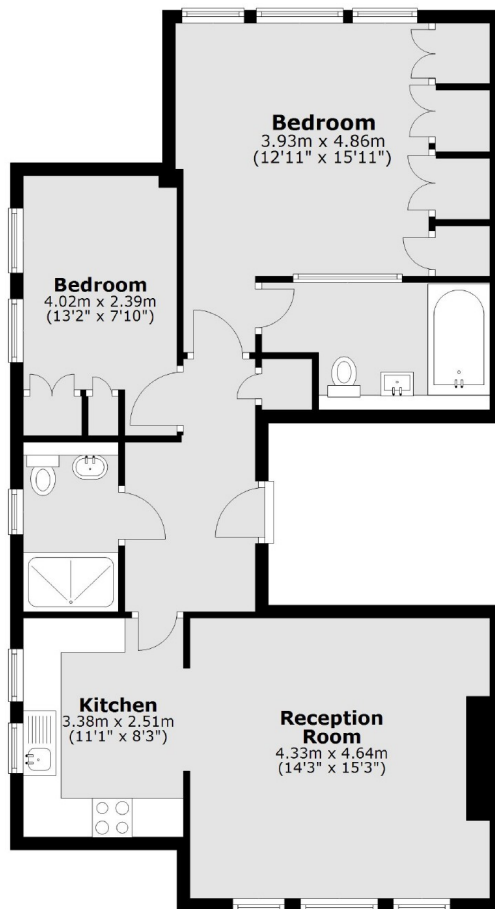
The apartment features a master bedroom with wall-to-wall fully fitted wardrobes and en-suite bathroom (bathtub), a second bedroom with a fitted wardrobe, a second bathroom that also has a steam room.

The property is located on the 2nd floor and has triple-aspect with 11 double-glazed windows all around, great natural light and a West facing living room. The building has direct access to the beautiful communal gardens from the ground floor.



Elm Park Gardens, London, SW10

Second Floor



Total area: approx. 77.9 sq. metres (838.5 sq. feet)