



RESIDE
BOLTON

NORTHSTONE
Plot 27
SOLD

Cynefin Danner Lane
Horwich, Bolton, BL6 5PZ

Asking Price £449,000



4



2



3



Cynefin Danner Lane

Horwich, Bolton, BL6 5PZ

5% DEPOSIT CONTRIBUTION

Spanning an impressive 1,835 sq ft, this exceptional modern home delivers luxury, versatility and standout kerb appeal. Designed for effortless contemporary living, it features a stunning roof garden, the perfect private retreat for relaxing, entertaining or enjoying sunset views. A secluded rear garden offers even more outdoor space for family time and alfresco dining.

Inside, the home boasts a sleek contemporary kitchen with a stylish breakfast bar, ideal for casual meals and social gatherings. Every bedroom is a generous double, while the top floor showcases two spacious rooms linked by a Jack & Jill bathroom. This entire level can flex to suit your lifestyle - as a playroom, home office, guest suite or luxurious private hideaway.

Beautifully balancing modern design with everyday practicality, this home is crafted to enhance your lifestyle from the moment you step inside. Upgraded flooring throughout!

Viewings are now available for this exact house type, early enquiry is strongly recommended.

Cynefin, Horwich

Situated in the heart of Horwich, Cynefin offers an exceptional collection of new build homes surrounded by the stunning scenery of the West Pennine Moors. Combining the charm of countryside living with the convenience of nearby towns and cities, Cynefin is perfectly placed for those seeking a balanced lifestyle.

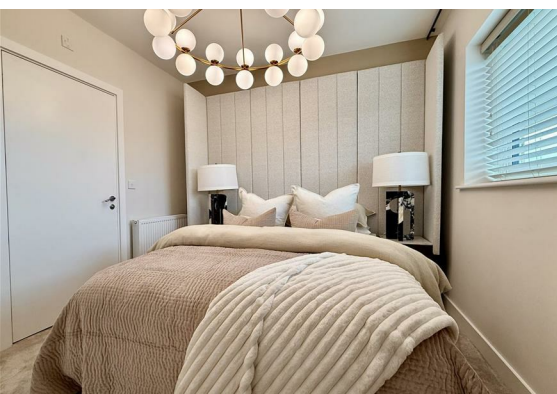
Each of our thoughtfully designed homes features flexible living spaces and generous





gardens, ideal for modern family life, entertaining, or simply unwinding. Discover the perfect blend of comfort, style, and location at Cynefin – a place you'll be proud to call home.

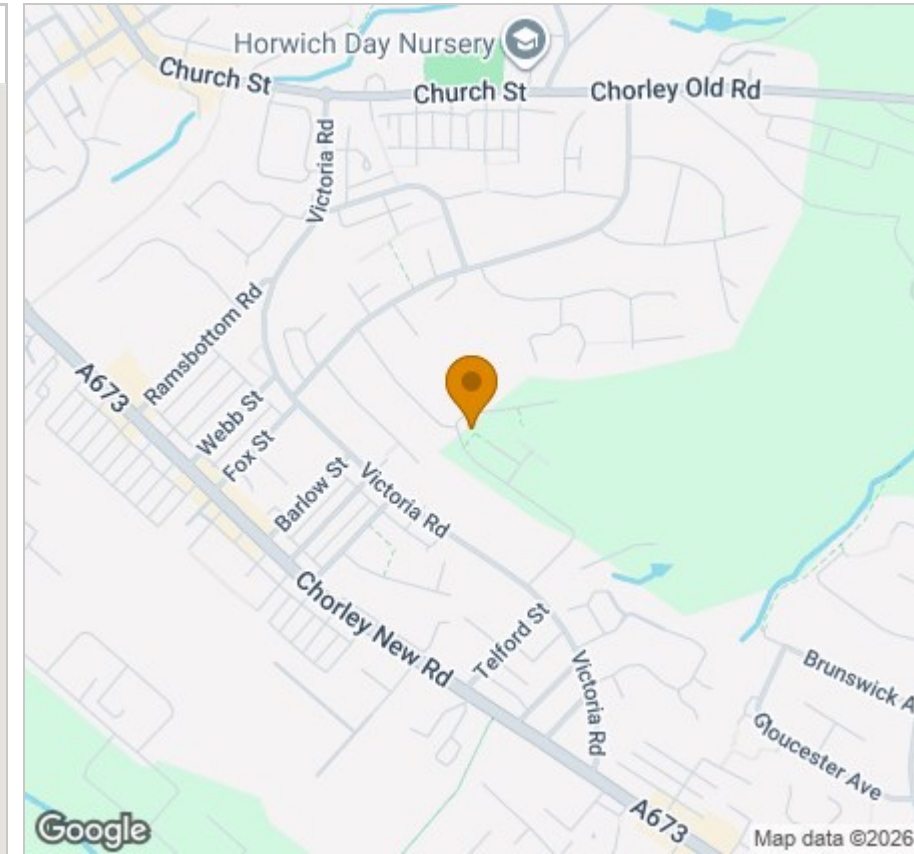
- 5% DEPOSIT CONTRIBUTION
- Exclusive private rooftop garden – with stunning views
- Expansive floor-to-ceiling windows
- Impressive high ceilings enhancing space
- State-of-the-art kitchen with premium finishes
- Fully integrated kitchen appliances
- Cutting-edge smart home technology throughout
- Dedicated EV charging point
- Spacious top-floor bedrooms with a Jack and Jill bathroom
- EPC Rating A



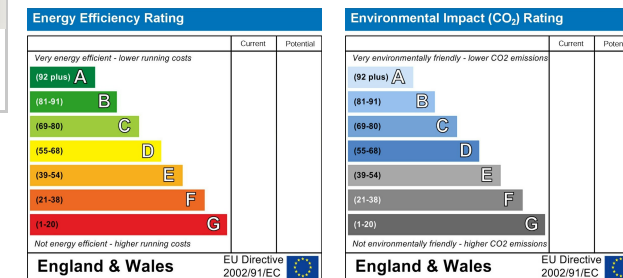
Floor Plan



Area Map



Energy Efficiency Graph



Viewing

Please contact our Reside Bolton Office on 01204 914 808 if you wish to arrange a viewing appointment for this property or require further information.

These particulars, whilst believed to be accurate are set out as a general outline only for guidance and do not constitute any part of an offer or contract. Intending purchasers should not rely on them as statements of representation of fact, but must satisfy themselves by inspection or otherwise as to their accuracy. No person in this firm's employment has the authority to make or give any representation or warranty in respect of the property.

Le Mans Place Barn Street, Bolton, BL1 1DJ

Tel: 01204 914 808 Email: hello@residebolton.com www.residebolton.com