

*A handsome and substantial Georgian country house, along with a detached lodge, situated within mature grounds of 12 acres, on the edge of the village of Hoxne, 5 miles from Diss.*



#### Guide Price

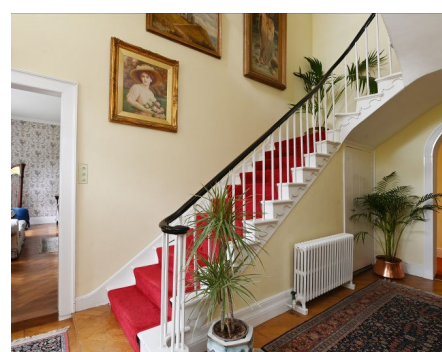
£1,600,000

Freehold

Ref: P7905/C

#### Address

Elm House  
Green Street  
Hoxne  
Eye  
Suffolk IP21 5AZ



**Elm House** - Three reception rooms, kitchen, breakfast room, office, utility room and cloakroom.

Principal bedroom with two dressing rooms and bathroom. Five further first floor double bedrooms, two with en-suites, family bathroom and shower room. Attic bedroom and loft.

Extensive and mature grounds extending to over 12 acres that include formal gardens with a tennis court and heated swimming pool. Double garage, workshop, studio and barns. Glasshouse and wood stores. Meadows enclosed by mature trees and hedging. (£1,250,000).

**Elm House Lodge** - An attractive detached cottage with two reception rooms, kitchen, utility room and cloakroom. Three first floor bedrooms and bathroom. (£350,000).

#### Contact Us



Clarke and Simpson  
Well Close Square  
Framlingham  
Suffolk IP13 9DU

T: 01728 724200  
email@clarkeandsimpson.co.uk  
www.clarkeandsimpson.co.uk

And at The London Office  
40 St James' Place  
London SW1A 1NS

## Location

Elm House is situated on the edge of the picturesque village of Hoxne in attractive, rolling countryside, adjacent to the Waveney Valley on the Suffolk/Norfolk border. Hoxne is a particularly pretty village with a pub and also a primary school. Hoxne is believed to be one of the oldest settlements in the country. It gave its name to an Ice Age - The Hoxnian period and was also the source of the Hoxne hoard, the largest find of Roman gold and silver in Britain, now housed in the British Museum. There are pleasant market towns in the local vicinity being Eye (4.5 miles), Diss (5 miles) and Harleston (6 miles). Each offers everyday needs including local and national chains of shops, hostelrys and regional commercial operations.

The house is in a rural location which is readily accessible being close to the A140 linking Ipswich and Norwich and providing access to the A14 and A12. there are frequent mainline trains to London's Liverpool Street Station from Diss and Ipswich.



## Description

### Elm House

Elm House is a particularly special and substantial Grade II Listed country house. It is accessed over two tree lined driveways and is an attractive mixture of Georgian and older timber framed construction with the principal front elevations facing south with a predominantly white brick façade and large sash windows. The rear of the house is the older timber framed dwelling which is believed to date from the 16th century. The house extends to over 6,000 sq feet of accommodation. Of particular note are the three principal reception rooms and three bedrooms above. The vendors have carried out an extensive refurbishment programme during their tenure which included replacing the kitchen and bathrooms. The electrics were upgraded and with regard to plumbing/heating, an improved pressurised system with pipe work and some new radiators were installed.

A front door leads to an elegant hallway. From here is access to a cellar, an archway leading to an inner hallway and doors to the drawing room and dining room. The well proportioned dining room has sash windows with shutters to the front of the property and a fireplace with a wood burning stove. A door leads into the kitchen which has been refitted in recent years by Neptune with a bespoke range of wall cupboards. Here there is an electric Aga along with an additional oven. There is a one and a half bowl stainless steel sink and integrated dishwasher. The kitchen has windows overlooking the rear of the property and there is also a fireplace with a wood burner. An opening leads to the breakfast room which is dual aspect and has exposed timbers. From the kitchen, there is a door to the rear of the property, the office and the inner hallway. The drawing room is a fine, well proportioned room with central marble fireplace and sash windows which have shutters overlooking the south facing grounds. Adjacent to this is the sitting room or library, that has part panelled walls along with south and west facing windows.

There are fitted cupboards and bookshelves as well as a fireplace. Off this is a side hall with door to the exterior. Also on the ground floor is a useful office with windows to the rear of the property, a utility room with sinks, cupboards, space and plumbing for fridges, washing machines and a dishwasher as well as windows and a door to the exterior. The ground floor also has a cloakroom with WC.

There are two staircases to the first floor landing. Bedroom one, which is the principal bedroom has south facing sash windows to the front of the property, a built-in cupboard, fireplace and door to a dressing room. Stairs rise to a upper dressing room and a door opens to an en-suite bathroom. Refitted in recent years, this comprises a bath with shower above and glazed screen, WC and hand wash basin. It has a sash window with garden views. Bedroom two, which is a spacious double, has a fireplace, built-in wardrobe, south facing sash windows and an en-suite shower room with WC, hand wash basin and shower. An inner landing provides access to the other first floor bedrooms, the family bathroom, shower room and there are also stairs to the attic rooms. Bedroom three, known as the lilac room, is triple aspect and has north, south and west facing windows as well as a fireplace, fitted cupboards and a built-in wardrobe. Off this is an en-suite bathroom with WC, hand wash basin, bath and south facing window. Bedroom four is dual aspect double with north and west facing windows, a hand wash basin and built-in wardrobe. Bedroom five is a double bedroom with north facing sash window with views over the garden and meadow. The family bathroom has been refurbished and comprises a bath, WC, hand wash basin and north facing window. Bedroom six is a dual aspect double with windows overlooking the grounds. In addition is a shower room with WC, hand wash basin and shower. Stairs from the first floor inner landing lead up to the second floor attic rooms. As well as a loft space, there is an attic bedroom, which has a shower room.

### **Elm House Lodge**

A courtyard with a double cartlodge measuring 29' x 14' leads to a front door that opens to a reception hall. Off this is a sitting room with fireplace and windows to two sides, and also access to the dining room. This looks over the grounds and has a door to a lobby that leads to the first floor. The kitchen is fitted with high and low level wall units and has two windows overlooking the grounds. A door leads in to the utility room that has fitted shelving along with a sink and space and plumbing for a washing machine and tumble drier. In addition is the oil fired boiler. Adjacent is a cloakroom with WC and hand wash basin. The first floor landing has a window, built-in airing cupboard and access to the three bedrooms and bathroom. Two of the bedrooms can be used as doubles and a third, a single or study. The bathroom has a bath, WC and hand wash basin as well as a window to the rear of the property.



## Outside

The property is approached via two tree lined driveways. The gardens wrap around the main house and are predominantly laid to lawn but contain mature trees, shrubs and beds. Immediately to the west of the house is an inner courtyard which leads to the swimming pool area. This is enclosed by a brick and flint wall. The pool is heated by an air source heat pump and here there is a brick building where there is a bar/kitchen and also a store room which houses the pool equipment.

The domestic part of the property lies to the north of the house where there is ample parking and a range of buildings. This includes a studio measuring 20' x 8'11", a brick built workshop and double garage measuring 18'3" x 9'10" and 20'2" x 18'8". In addition, is a substantial range of rendered barns which are subdivided into three sections. The main barn measures 52' x 28' with the adjacent barns measuring 27' x 16' and 25' x 16'. At one end are former stables now used as wood stores.

Within the attractive grounds is a glasshouse which has a brick floor and measures approximately 19' x 14'. It contains a mature vine. In addition is a potting shed. Beyond is a further area of lawn and a hard tennis court. Beyond the more formal gardens are the meadows. These are enclosed by fencing, trees and hedging and around part of the meadow is a tree lined walkway. In all, the grounds extend to just over 12 acres.























## Elm House Lodge





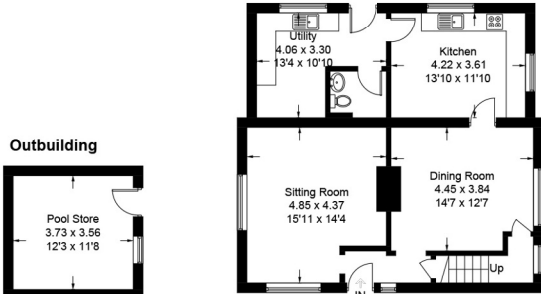


# Elm House and Elm House Lodge, Hoxne

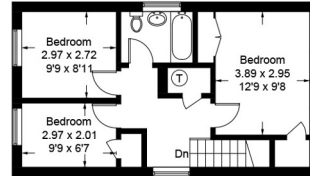
Elm House = 577.4 sq m / 6215 sq ft (Excluding Outbuildings)

Elm House Lodge = 118.6 sq m / 1277 sq ft

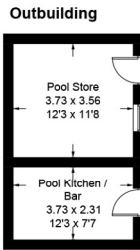
(Approximate Only)



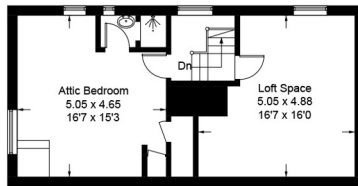
Elm House Lodge  
Ground Floor



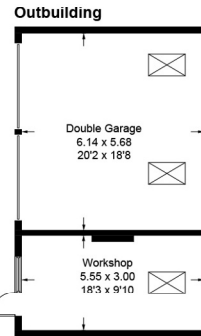
Elm House Lodge  
First Floor



(Not Shown In Actual  
Location / Orientation)



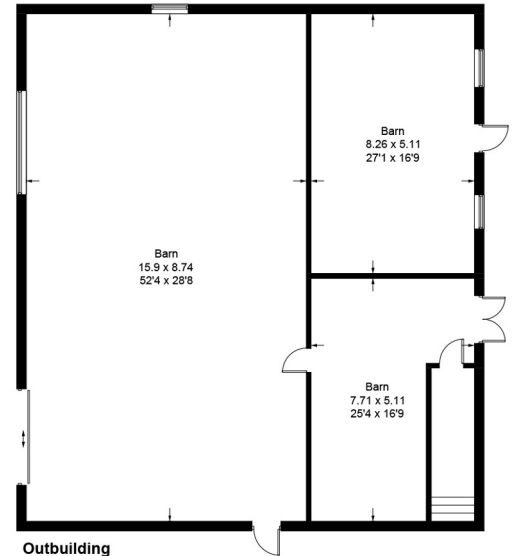
Second Floor



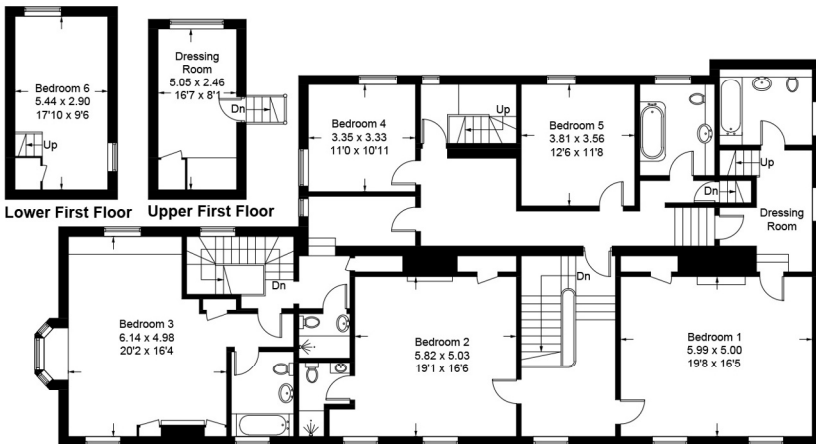
(Not Shown In Actual  
Location / Orientation)



Ground Floor



Outbuilding  
(Not Shown In Actual Location / Orientation)



First Floor



---

*Viewing* Strictly by appointment with the agent.

*Services* Mains water (single supply to the house and lodge), mains electricity (separate supplies for the house, barns and lodge). Private drainage system (the house and lodge share a septic tank and whilst it is understood that this works in a satisfactory manner, it is unlikely to comply with the modern General Binding Rules. A buyer may wish to budget to install a new sewage treatment plant/s and the cost of this has been taken into account within the guide price). Separate oil-fired central heating systems to both the house the lodge. Air source heat pump serving the swimming pool.

*Broadband* To check the broadband coverage available in the area click this link –  
<https://checker.ofcom.org.uk/en-gb/broadband-coverage>

*Mobile Phones* To check the mobile phone coverage in the area click this link –  
<https://checker.ofcom.org.uk/en-gb/mobile-coverage>

*EPC* House = E. Lodge = F (exemption in place). Copies available from the agents upon request.

*Council Tax* Elm House = Band G; £3,816.73 and Elm House Lodge = Band D; £2,290.04 payable per annum 2026/2027

*Local Authority* Mid Suffolk District Council, Endeavour House, 8 Russell Rd, Ipswich IP1 2BX; Tel: 0345 6066067

---

## NOTES

1. Every care has been taken with the preparation of these particulars, but complete accuracy cannot be guaranteed. If there is any point, which is of particular importance to you, please obtain professional confirmation. Alternatively, we will be pleased to check the information for you. These Particulars do not constitute a contract or part of a contract. All measurements quoted are approximate. The Fixtures, Fittings & Appliances have not been tested and therefore no guarantee can be given that they are in working order. Photographs are reproduced for general information and it cannot be inferred that any item shown is included. No guarantee can be given that any planning permission or listed building consent or building regulations have been applied for or approved. The agents have not been made aware of any covenants or restrictions that may impact the property, unless stated otherwise. Any site plans used in the particulars are indicative only and buyers should rely on the Land Registry/transfer plan.

2. The Money Laundering, Terrorist Financing and Transfer of Funds (Information on the Payer) Regulations 2017 require all Estate Agents to obtain sellers' and buyers' identity.

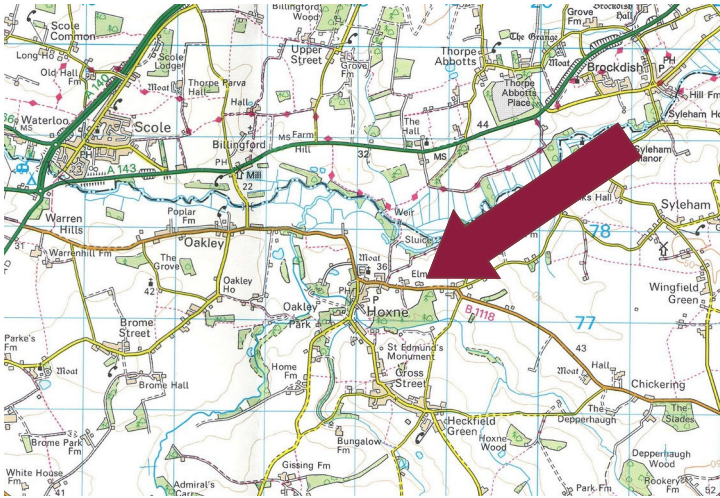
3. The vendor has completed a Property Information Questionnaire about the property and this is available to be emailed to interested parties.

4. The house and lodge are on separate Titles (owned by different family members). The property is being sold as a whole with the apportioned figures of £1,250,000 for Elm House and £350,000 for Elm House Lodge. A sale of just Elm House without the Lodge may be considered.

5. Elm House Lodge is occupied by tenants who pay £1200 per calendar month. If at all possible, the tenants would like to continue to rent the property.

6. Elm House Lodge is deemed to be Curtilage Listed.

**May 2026**



## Directions

Heading north on the A140, turn right onto the B1118 towards Hoxne, Stradbroke. Having entered Hoxne, bear round to the left as if continuing to Stradbroke and after about 400m, just as you are leaving the village, Elm House can be found on the left hand side of the road.

For those using the What3Words app:  
///beep.bend.outer



Need to sell or buy furniture?

If so, our Auction Centre would be pleased to assist — please call 01728 746323.