



Price
£350,000

Freehold

3x  1x  1x 

**Updown Way, St.
Augustine's Chartham,
Canterbury, Kent, CT4**

Wards
Helping you move forwards



Main features

- Immaculately presented semi-detached home
- Sought-after village location in Chartham
- Close to shops, primary school and amenities
- Walking distance to train station and playing field
- Move-in ready with no work required

Accommodation

GROUND FLOOR

Entrance Hallway

Cloakroom

Kitchen: 9'3 x 7'9 (2.82m x 2.36m)

Lounge/Diner: 16'0 at widest point x 10'9 at widest point (4.88m x 3.28m)

Conservatory: 15'7 x 7'2 (4.75m x 2.19m)

FIRST FLOOR

Landing

Bedroom 1: 13'8 x 10'4 (4.17m x 3.15m)

Bedroom 2: 11'1 x 8'4 (3.38m x 2.54m)

Bedroom 3: 10'8 x 7'2 (3.25m x 2.19m)

Bathroom

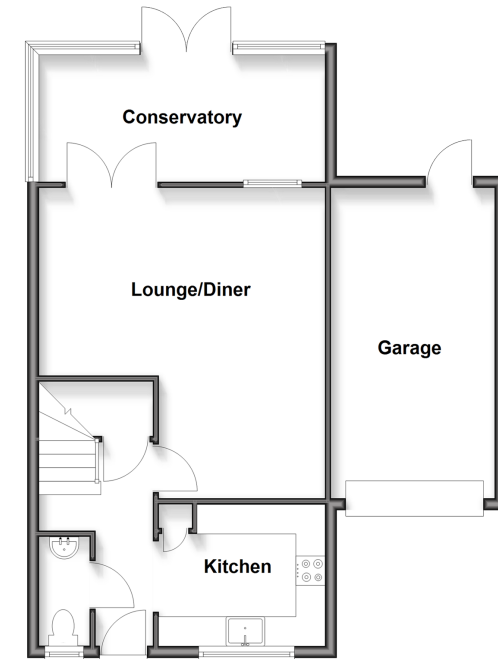
OUTSIDE

Driveway

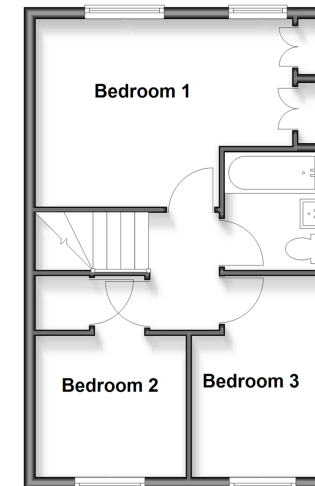
Garage

Rear Garden

Ground Floor
Approx. 64.5 sq. metres (694.3 sq. feet)



First Floor
Approx. 38.1 sq. metres (410.3 sq. feet)



Call Canterbury - 01227 766669 ■ wardsofkent.co.uk

■ If buying to let, the energy rating will need to be improved to at least 'E' rating before you can let the property



10349677/20260413/TG/CB