

SNELLERS

ESTATE AGENTS



Kendrey Gardens, TW2

£850,000

This large four bedroom semi-detached 1930s house could be a wonderful family home for years to come.



Benefitting from having been rear and loft extended, having off street parking, a sunny garden and a separate garage.

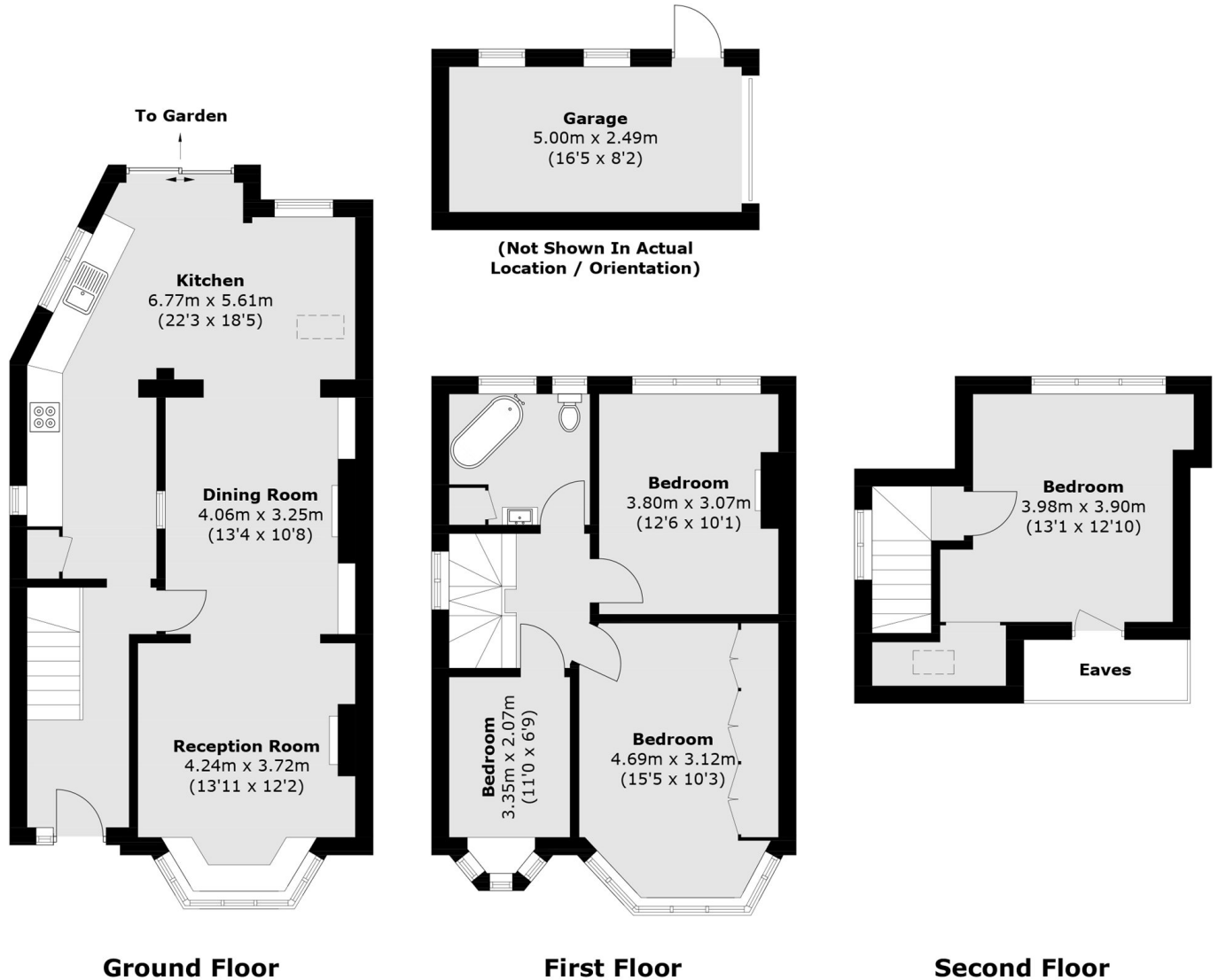
Kendrey Gardens is a beautiful residential cul-de-sac located just off Whitton Road. Twickenham town centre is close by offering a vast array of local shops, bars and restaurants, as is Twickenham mainline station which provides fast and frequent city links.

- Garage • Four Bedrooms • West Facing Garden •
- Great School Catchment • 1930's Semi- Detached • Driveway •



SNELLERS

ESTATE AGENTS



Approx Internal Area: 126.7 sq. m (1,363.7 sq. ft)
(Excluding Eaves)
Garage: 12.6 sq. m (135.6 sq. ft)

Snellers Twickenham Sales
64-66 Heath Road
Twickenham
TW1 4BX
020 8892 5555
twickenhamsales@snellers.co.uk

Energy Rating: D We aim to make our particulars both accurate and reliable. However they are not guaranteed; nor do they form part of an offer or contract. If you require clarification on any points then please contact us, especially if you're traveling some distance to view. Please note that appliances and heating systems have not been tested and therefore no warranties can be given as to their good working order