



Property Webb
At the HEART of your move

4 Old Mill Court, East Whitburn

Offers Over £400,000

3 2 4

- Detached three-bed bungalow
- Peaceful river backdrop
- NEFF kitchen appliances
- Principal bedroom with en-suite shower room
- Detached double garage and extensive driveway
- Beautifully established wraparound gardens
- Fantastic kitchen and dining space
- Conservatory with garden outlook
- Flexible living accommodation throughout
- Solar Panels

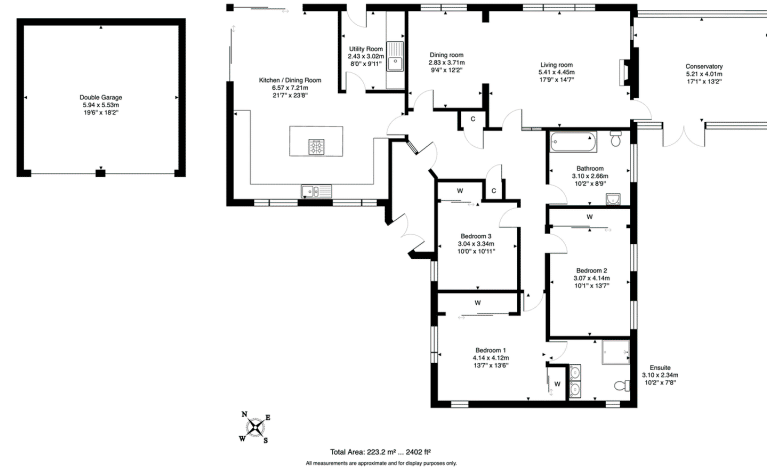


With beautifully established wraparound gardens, a peaceful river backdrop and flexible living accommodation throughout, this much-loved detached bungalow offers a wonderful balance of space, privacy and practicality. Thoughtfully adapted over the years, the property features a fantastic kitchen and dining space, three double bedrooms, a detached double garage and a setting that's easy to enjoy throughout the seasons.





4 Old Mill Court, East Whitburn, EH47 0JY



01506 637553

info@property-webb-co.uk

www.property-webb.co.uk

71 South Bridge St, Bathgate, EH48 1TJ