



HORSEFERRY PLACE, SE10

£3,750 per month

Luxurious apartment
Outstanding views
Private balcony
Three bedrooms
Two bathrooms
Energy rating: b

@marshandparsons
marshandparsons.co.uk

MARSH &
PARSONS

ABOUT THE PROPERTY

An exceptional three bedroom, two bathroom apartment offering breathtaking panoramic views of the River Thames and Canary Wharf. Offering luxury living with features such as herringbone flooring, floor-to-ceiling windows, high quality fixtures and fittings and a private balcony overlooking the River Thames.

Ideally located close to the Greenwich centre, residents can enjoy an excellent selection of riverside pubs, restaurants, cafés, and supermarkets. Greenwich Pier, Greenwich Market, the Royal Park, and Cutty Sark DLR station are all within a short walk. Greenwich mainline and DLR stations are also within easy walking distance, providing excellent transport links to Canary Wharf,







FURTHER DETAILS

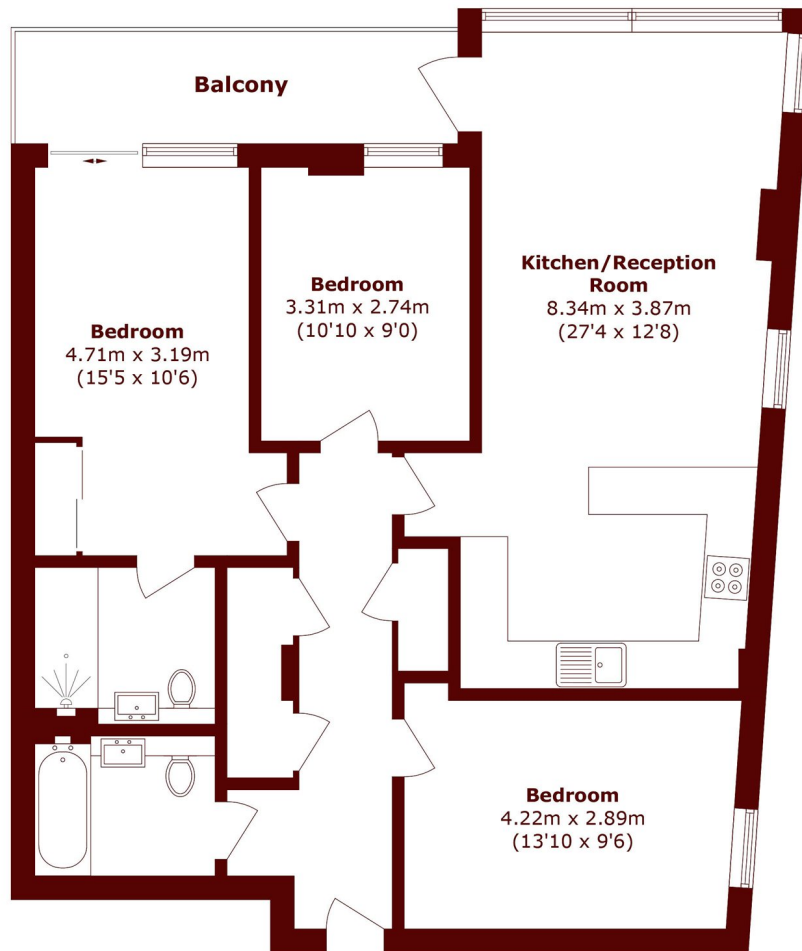
The property features a generously proportioned living and dining area with a desirable dual aspect, flooded with natural light throughout. The space is complemented by a contemporary open plan kitchen fitted with high-quality integrated appliances.

The apartment comprises three spacious double bedrooms, with the principal bedroom benefiting from built-in wardrobes and a stylish en-suite bathroom featuring a walk-in shower. The modern family bathroom is finished to a high standard and includes a bathtub and a shower.

Further benefits include underfloor heating and ample



STEP INSIDE HORSEFERRY PLACE



Total area (approx.): 91.6 sq. m (985.9 sq. ft)
Balcony area (approx.): 7.9 sq m (85.0 sq. ft)

Greenwich
020 8815 2230

Energy Rating: B We aim to make our particulars both accurate and reliable. However, they are not guaranteed; nor do they form part of an offer or contract. If you require clarification on any points then please contact us, especially if you're traveling some distance to view. Please note that appliances and heating systems have not been tested and therefore no warranties can be given as to their good working order

MARSH &
PARSONS