



10 Langley Hall Road, Prestwich

Manchester

£250,000



10 Langley Hall Road

Prestwich, Manchester

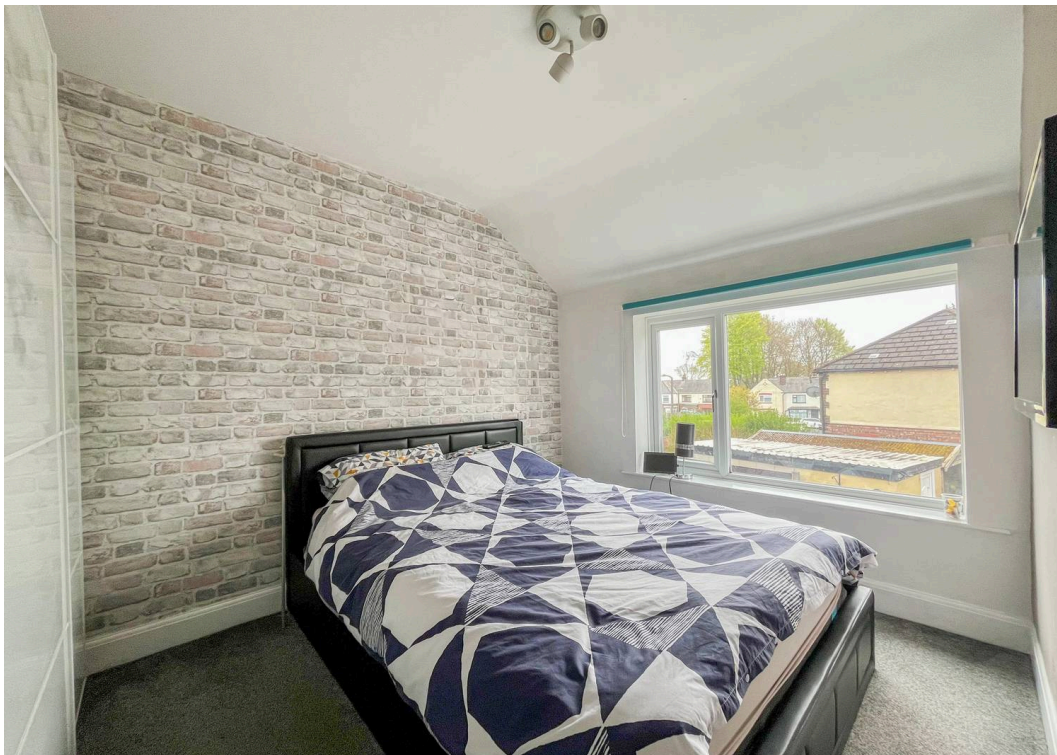
Modern two-bed quasi-semi with spacious lounge, kitchen-diner, garden, driveway, and garage. Sought-after Prestwich location near schools, transport, and amenities. Ideal for families or investors.

Council Tax band: A

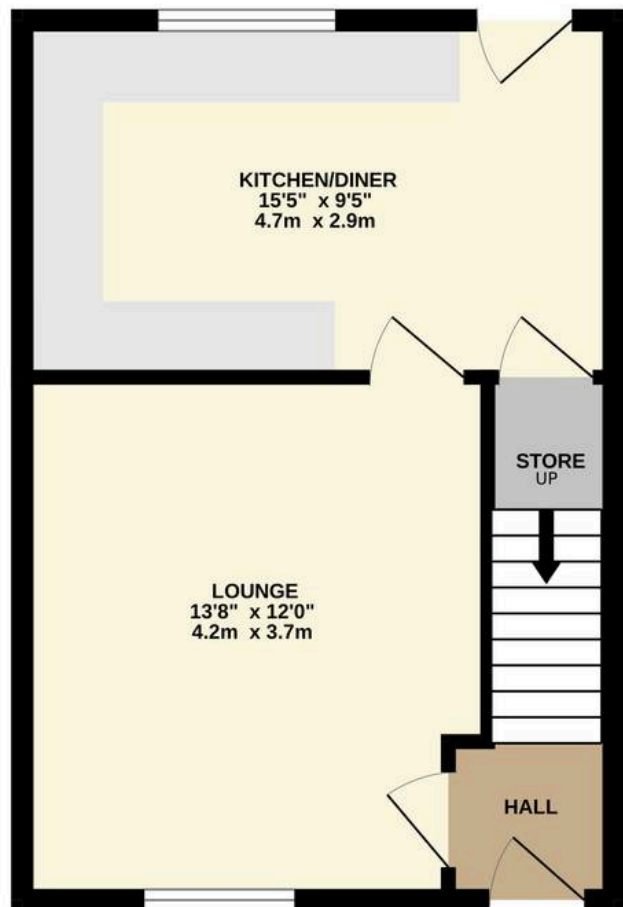
Tenure: Freehold

- Mature quasi-semi-detached home with a stylish modern interior and generous gardens, set in a consistently popular Prestwich residential location
- Entrance hall, lounge, newly-fitted kitchen-diner. Two double bedrooms and white bathroom suite with modern fittings
- Large, well-kept rear garden with lawn and patio areas, perfect for outdoor dining, play or future landscaping ideas
- Driveway parking to the front plus access to a rear garage
- Positioned within a quiet, established community close to Prestwich's vibrant village centre and great amenities
- Excellent commuter links with access to M60, Metrolink stops & buses to Manchester
- Close to highly regarded local schools, parks and amenities, making it an appealing choice for first-time buyers, young families or investors seeking strong rental demand

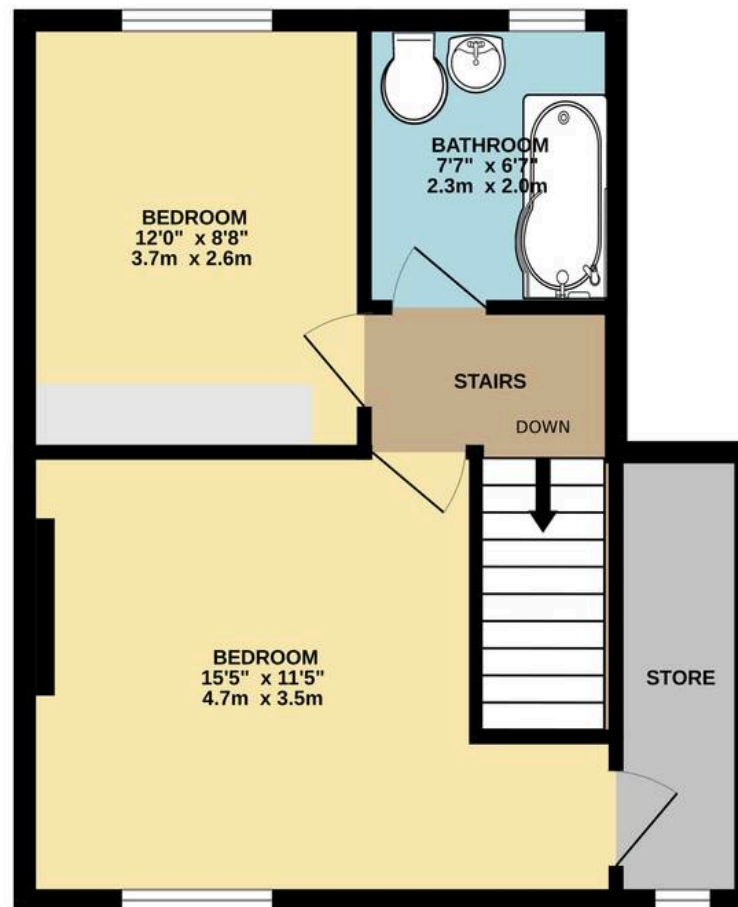




GROUND FLOOR
360 sq.ft. (33.4 sq.m.) approx.



1ST FLOOR
397 sq.ft. (36.9 sq.m.) approx.



TOTAL FLOOR AREA : 757 sq.ft. (70.3 sq.m.) approx.

Whilst every attempt has been made to ensure the accuracy of the floorplan contained here, measurements of doors, windows, rooms and any other items are approximate and no responsibility is taken for any error, omission or mis-statement. This plan is for illustrative purposes only and should be used as such by any prospective purchaser. The services, systems and appliances shown have not been tested and no guarantee as to their operability or efficiency can be given.

Made with Metropix ©2026



HARRISON ESTATE AGENTS

Harrison Estate Agents, 10 Bolton Street - BL9 0LQ

0161 797 8616

info@harrison-estates.co.uk

www.harrison-estates.co.uk