



## Hatfields, SE1

### £390,000

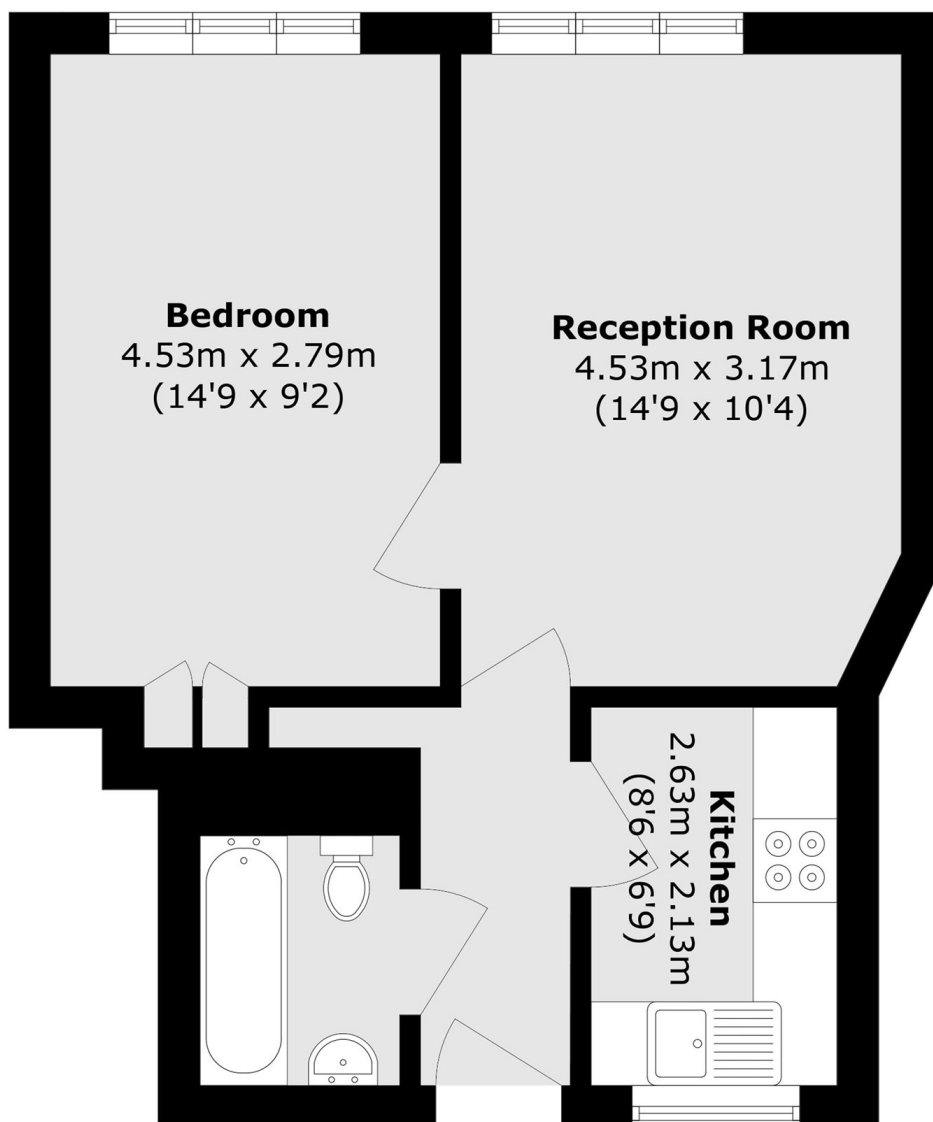
A highly attractive top-floor flat offering bright and spacious living throughout. The property features a generous living room, a separate fully fitted modern kitchen, a three-piece bathroom, and a well-proportioned double bedroom. Further benefits include secure entry and access to a large, well-maintained communal garden.

Benson House enjoys an enviable location on Hatfields, just off The Cut, within easy reach of both Southwark Station and Waterloo Station. The vibrant South Bank is just moments away, along with Lower Marsh, offering a fantastic selection of independent cafés, restaurants, theatres, and local attractions.

### Features

- Top Floor Flat
- Separate Kitchen
- Large Living Room
- Impressive Views
- Secure Entry
- Communal Gardens
- Very Central Location

# Hatfields, London, SE1



Total area (approx.): 40.6 sq. m (437.0 sq. ft)