



Waterdale Close, Bridlington

YO16 6RX

Asking Price £350,000



5



4



2



C

HUNTERS[®]

HERE TO GET *you* THERE

15 Waterdale Close, Bridlington, YO16 6RX

DESCRIPTION

Situated in a highly desirable residential area of Bridlington, just off The Crayke, this substantial five-bedroom property offers generous and versatile living space, making it an ideal family home.

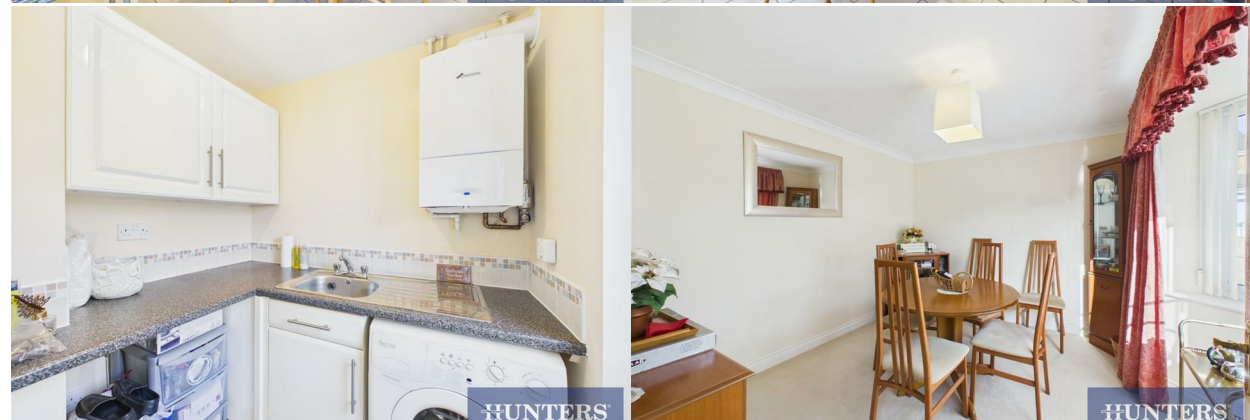
Upon entering, you are welcomed by a spacious entrance hall leading through to a large lounge, complete with a feature fireplace and double doors onto the rear garden - perfect for both relaxing and entertaining. There is also a separate dining room, offering ample space for a family dining table, or alternatively serving as an additional sitting room or playroom.

The kitchen is bright and inviting, with large windows allowing natural light to flood the space. It offers space for a dining table, a range of integrated appliances, and plenty of cupboard and worktop space. A utility room provides further practicality along with a downstairs WC.

To the first floor are three spacious bedrooms. The main bedroom benefits from fitted wardrobes and a private en suite shower room, while a second double bedroom also enjoys its own en suite. A modern family bathroom completes this floor, fitted with a three-piece suite including a bath. The second floor offers two further double bedrooms, along with an additional bathroom featuring a shower, ideal for older children or visiting guests.

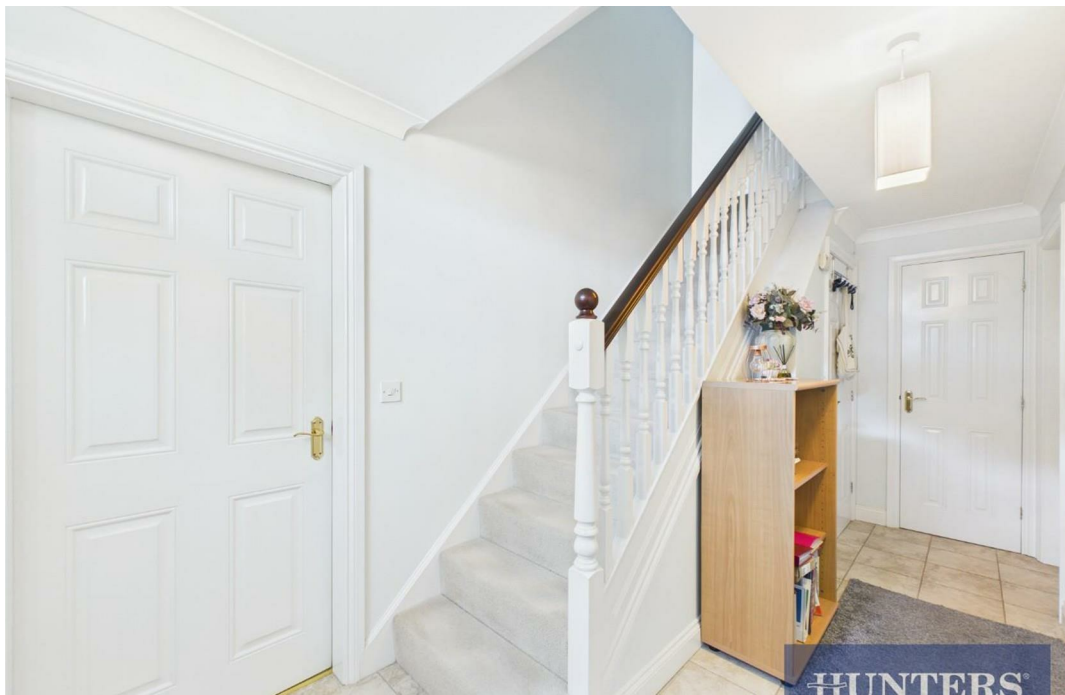
Externally, the property boasts a well-presented, enclosed rear garden with a patio area, artificial lawn, and attractive flower borders - creating a lovely space for outdoor dining, entertaining, or simply enjoying the sunshine. To the front there is off-road parking, and the added benefit of a double garage.

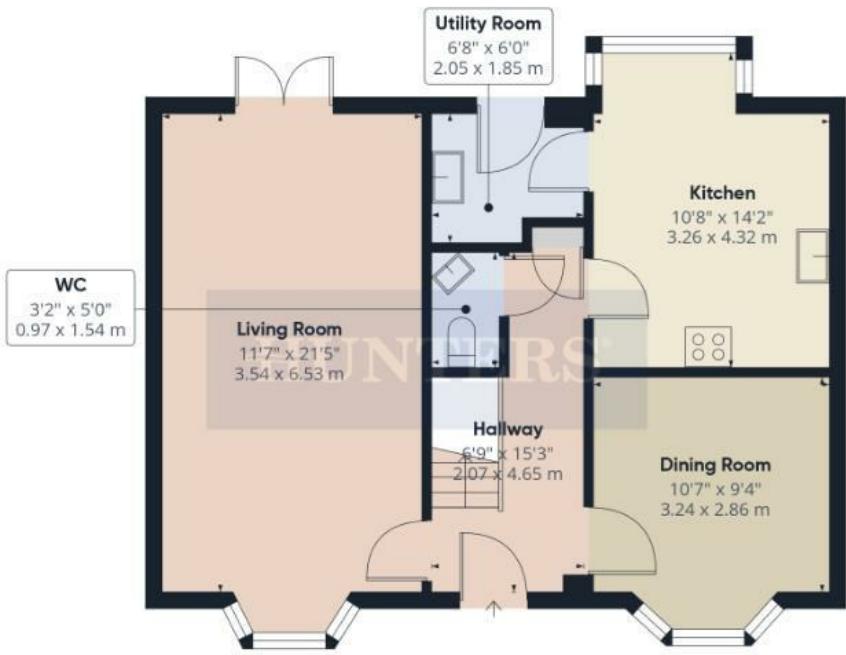
Waterdale Close is a sought-after residential area, known for its family-friendly environment. Positioned just off The Crayke, the area offers convenient access to a range of local amenities, including schools, shops, and transport links. Bridlington's town centre and seafront are within easy reach, along with nearby supermarkets and leisure facilities. Schedule a viewing today!



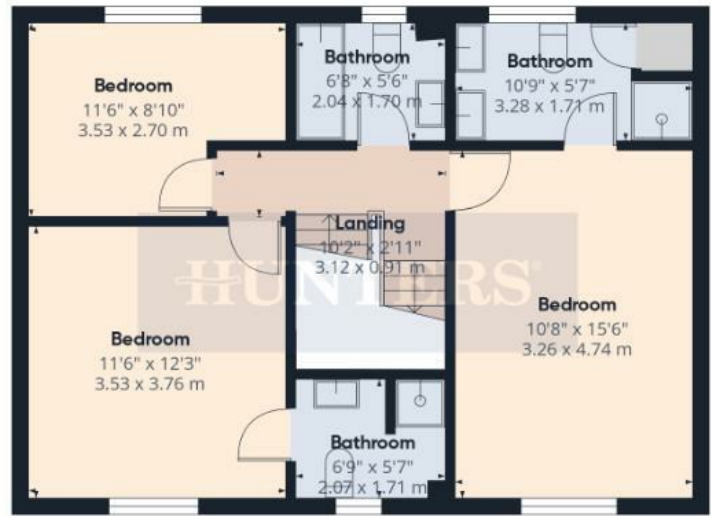


HUNTERS®

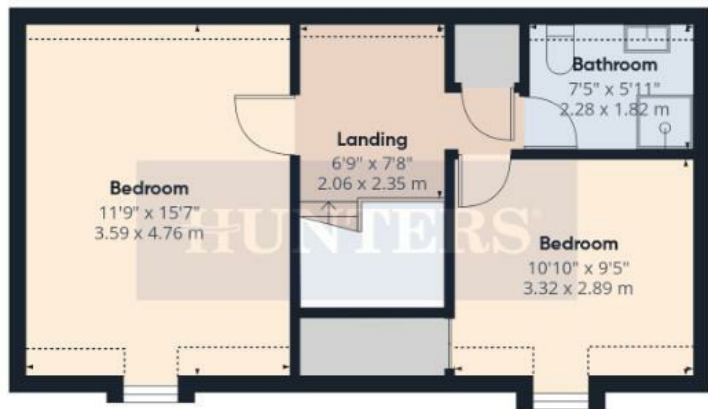




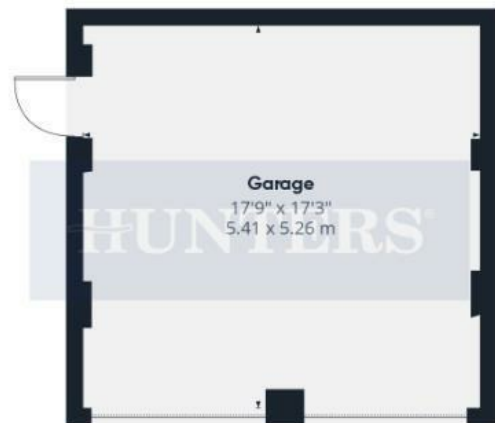
Ground Floor Building 1



Floor 1 Building 1



Floor 2 Building 1



Ground Floor Building 2

Approximate total area⁽¹⁾

1968 ft²

182.9 m²

Reduced headroom

37 ft²

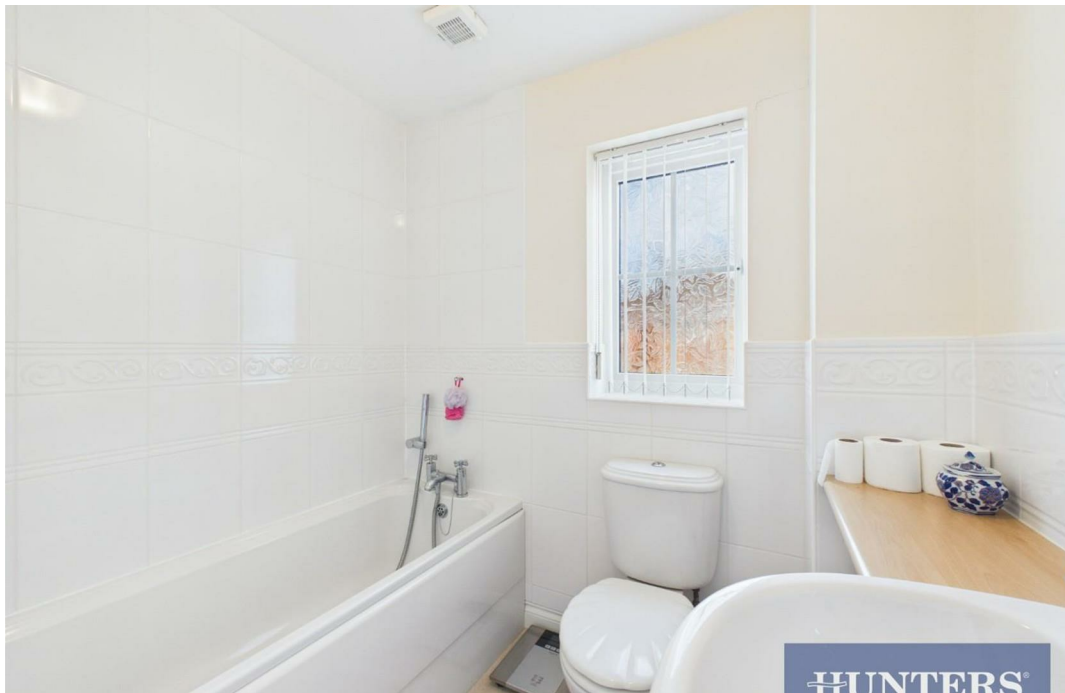
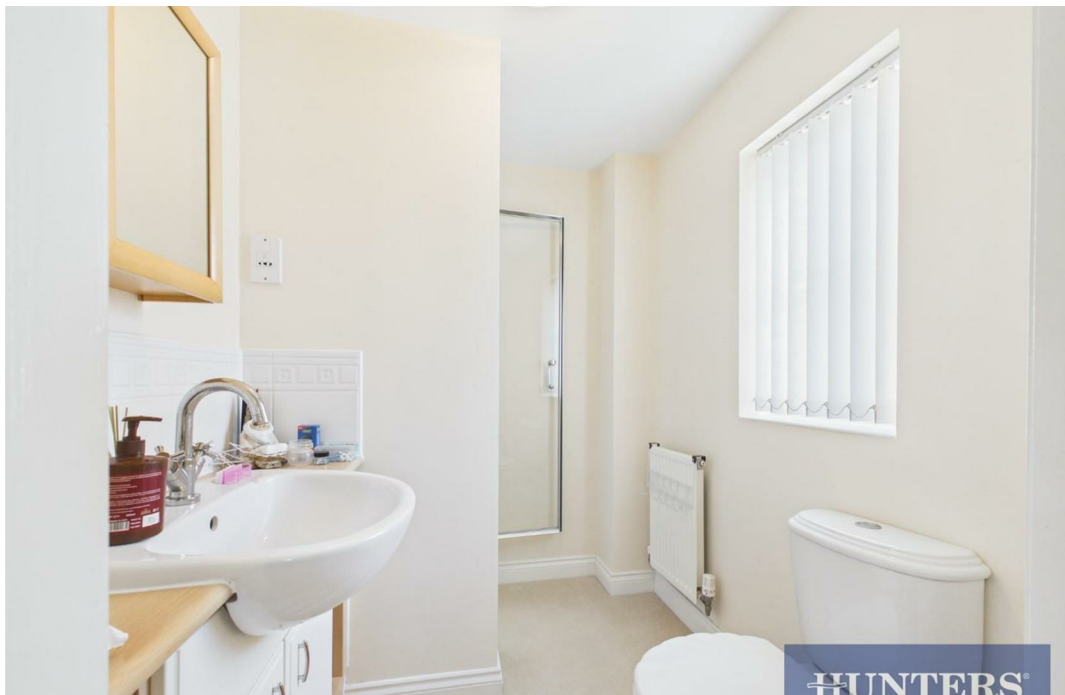
3.5 m²

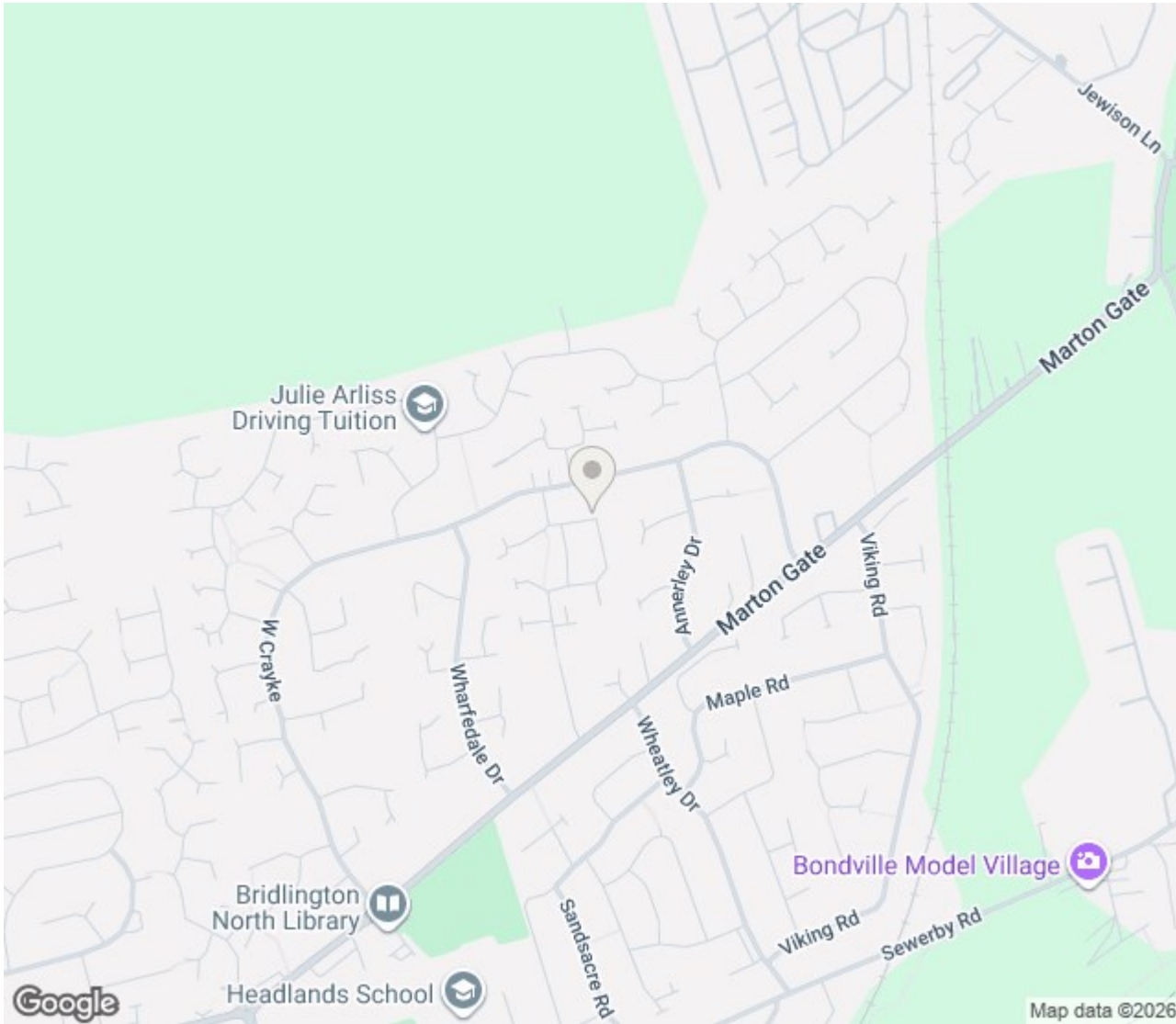
(1) Excluding balconies and terraces

Reduced headroom

Below 5 ft/1.5 m

Calculations reference the RICS IPMS 3C standard. Measurements are approximate and not to scale. This floor plan is intended for illustration only.





ENERGY PERFORMANCE CERTIFICATE

Energy Efficiency Rating		
	Current	Potential
<i>Very energy efficient - lower running costs</i>		
(92 plus) A		
(81-91) B		85
(69-80) C	78	
(55-68) D		
(39-54) E		
(21-38) F		
(1-20) G		
<i>Not energy efficient - higher running costs</i>		
England & Wales	EU Directive	

Thinking of Selling?

If you are thinking of selling your home or just curious to discover the value of your property, Hunters would be pleased to provide free, no obligation sales and marketing advice. Even if your home is outside the area covered by our local offices we can arrange a Market Appraisal through our national network of Hunters estate agents.

27 Quay Road, Bridlington, YO15 2AR | 01262 674252 | bridlington@hunters.com







These particulars are intended to give a fair and reliable description of the property but no responsibility for any inaccuracy or error can be accepted and do not constitute an offer or contract. We have not tested any services or appliances (including central heating if fitted) referred to in these particulars and the purchasers are advised to satisfy themselves as to the working order and condition. If a property is unoccupied at any time there may be reconnection charges for any switched off/disconnected or drained services or appliances - All measurements are approximate.