



Waldegrave Road, TW11

£849,950

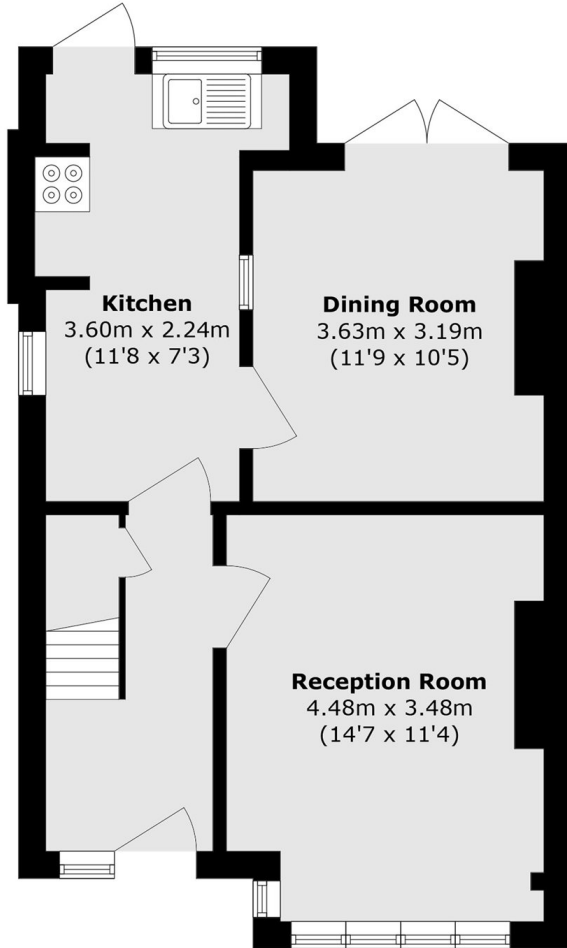
What an opportunity to buy this home full of potential inside and out. It is not often a home like this comes to the market. There are three bedrooms, no onward chain and a generous garden.

Waldegrave Road is located close to Teddington High Street, transport links by bus and trains to Waterloo along with school catchment, The River Thames and Bushy Park.

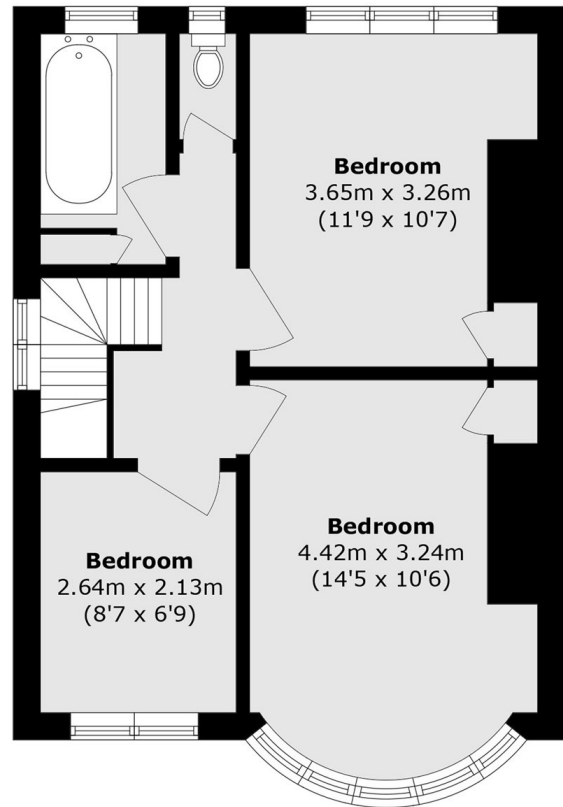
Features

- Semi-Detached
- No Onward Chain
- Three bedrooms
- Potential To Extend
- Long Garden
- Excellent Location

Waldegrave Road, Teddington, TW11



Ground Floor



First Floor

Total area (approx.): 88.4 sq. m (951.5 sq. ft)