



Grosvenor Waterside

Chelsea, SW1W

knok
knok

Contemporary Chelsea Living Within One of SW1's Premier Riverside Developments

Positioned on the seventh floor of the sought-after Cubitt Building within Grosvenor Waterside, this beautifully presented one-bedroom apartment offers an exceptional opportunity to own a stylish London base in one of Chelsea's most prestigious modern developments.

Designed with both practicality and contemporary living in mind, the apartment features a bright open-plan reception, dining and kitchen space, creating a seamless environment for everyday living, entertaining, or working from home. Large windows invite excellent natural light, enhancing the sense of space throughout.

The well-proportioned bedroom benefits from fitted storage, while the modern bathroom is finished to a high standard. Additional built-in storage further enhances functionality, making this an ideal turnkey property for first-time buyers, investors, or those seeking a refined pied-à-terre.

Residents of Grosvenor Waterside enjoy 24-hour concierge, secure entry, and access to one of Chelsea's most desirable lifestyle-led developments, moments from the River Thames, Sloane Square, Battersea Power Station, and the King's Road.





Walking distance to Sloane
Square, Battersea Power
Station & King's Road



Where Location
Becomes Lifestyle



Key Features:

Highlights;

- Seventh-floor one-bedroom apartment
- Approx. 422 sq ft / 39.2 sq m
- Modern fitted kitchen
- Spacious double bedroom with storage
- Contemporary bathroom suite
- 24-hour concierge and secure development
- Located within prestigious Grosvenor Waterside
- Walking distance to Sloane Square, Battersea Power Station & King's Road
- Ideal London base, first home, or investment purchase



Chelsea, SW1W

Grosvenor Waterside represents one of South West London's most established luxury residential developments, perfectly positioned on the banks of the River Thames between Chelsea and Belgravia.

This exceptional location offers immediate access to the boutique elegance of the King's Road, the green open spaces of Battersea Park, and the rapidly evolving lifestyle destination of Battersea Power Station, now home to world-class shopping, dining, and entertainment.

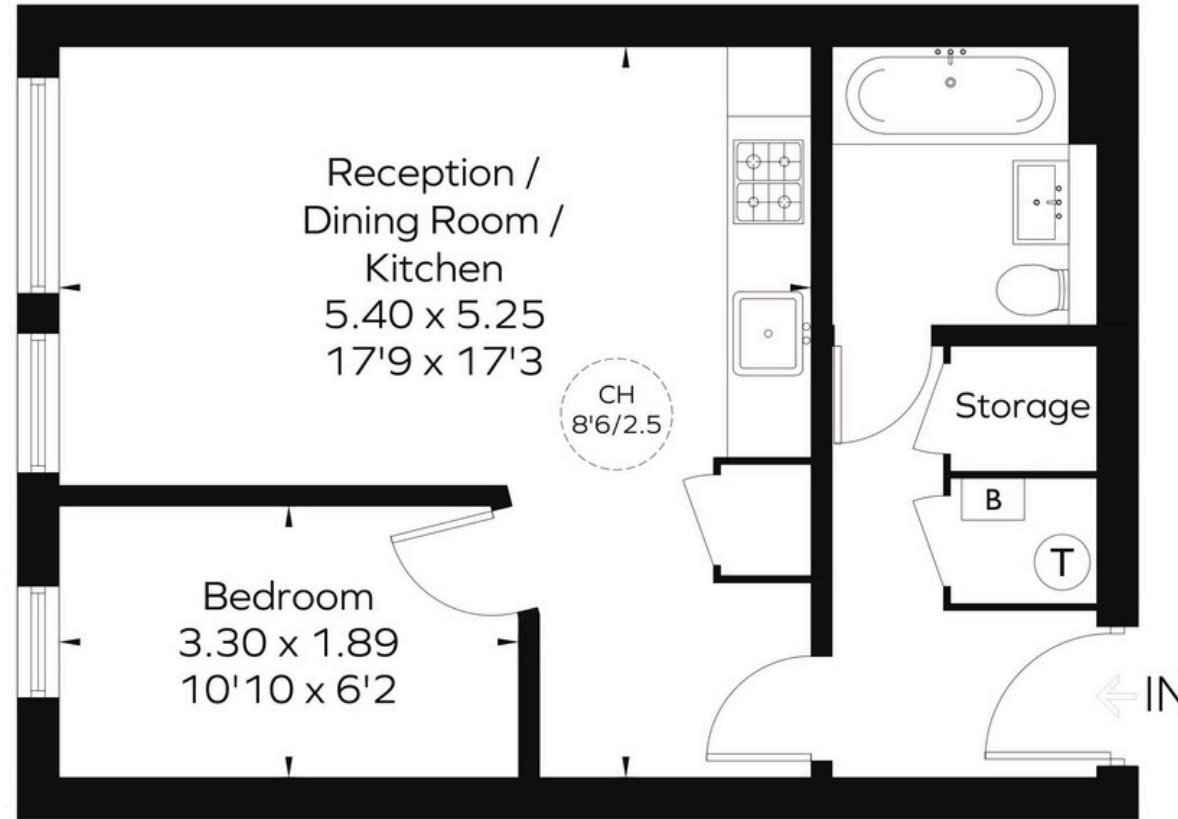
Residents benefit from superb connectivity via Sloane Square, Victoria, and nearby riverboat services, making travel across London both convenient and efficient.

Combining riverside tranquillity with prime central convenience, Grosvenor Waterside continues to attract professionals, international buyers, and investors seeking secure, high-quality London living in one of the capital's most desirable postcodes.



Approximate Gross Internal Area = 422 sq. ft. (39.2 sq. m.)

CH
8'6/2.5 = Ceiling Height



Seventh Floor

Score	Energy rating	Current	Potential
92+	A		
81-91	B		
69-80	C	78 c	80 c
55-68	D		
39-54	E		
21-38	F		
1-20	G		

This plan is for layout guidance only. Not drawn to scale unless stated. Windows and door openings are approximate. Whilst every care is taken in the preparation of this plan, please check all dimensions, shapes and compass bearings before making any decisions reliant upon them.
ID 1296896