



ehB
RESIDENTIAL

Your Property - Our Business

225, Chesterton Drive, Leamington Spa

£1,250 (From) Per
Calendar Month

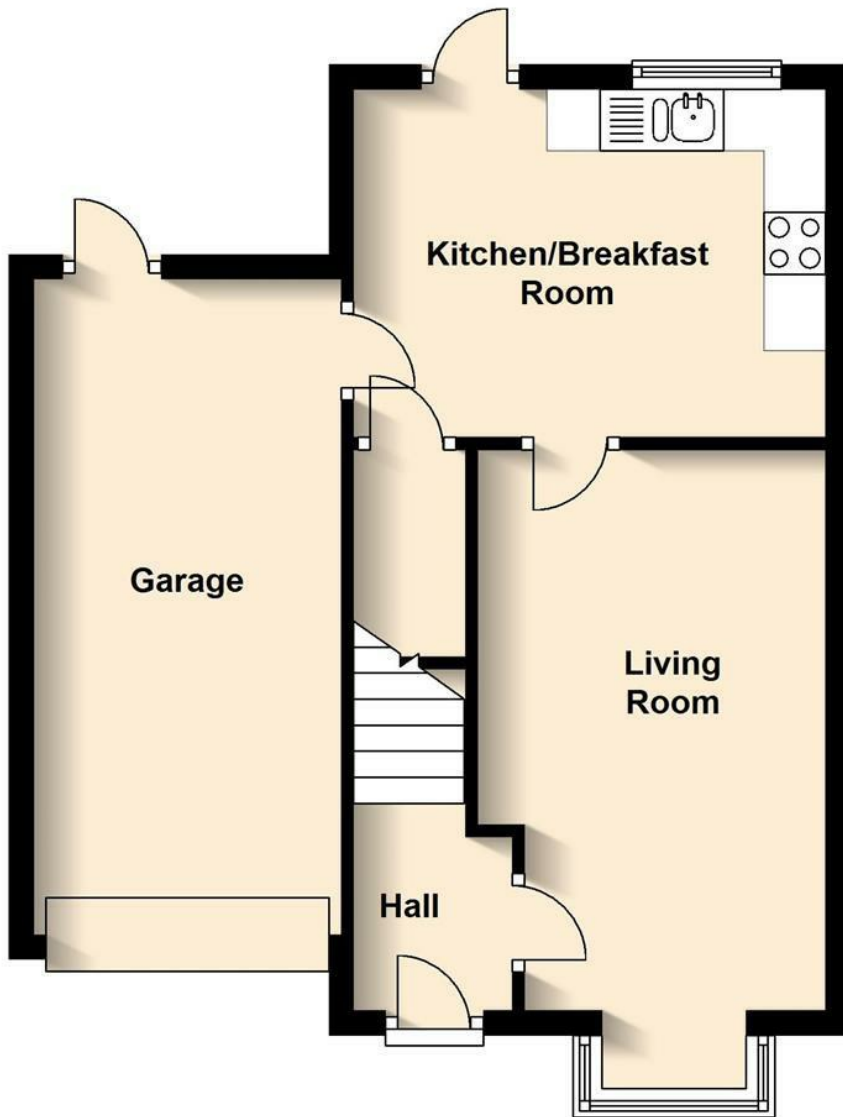


A well presented, two bedroom semi detached House in a popular residential area that has been freshly decorated. The property includes a large sunny aspect garden and ample parking for at least two cars.



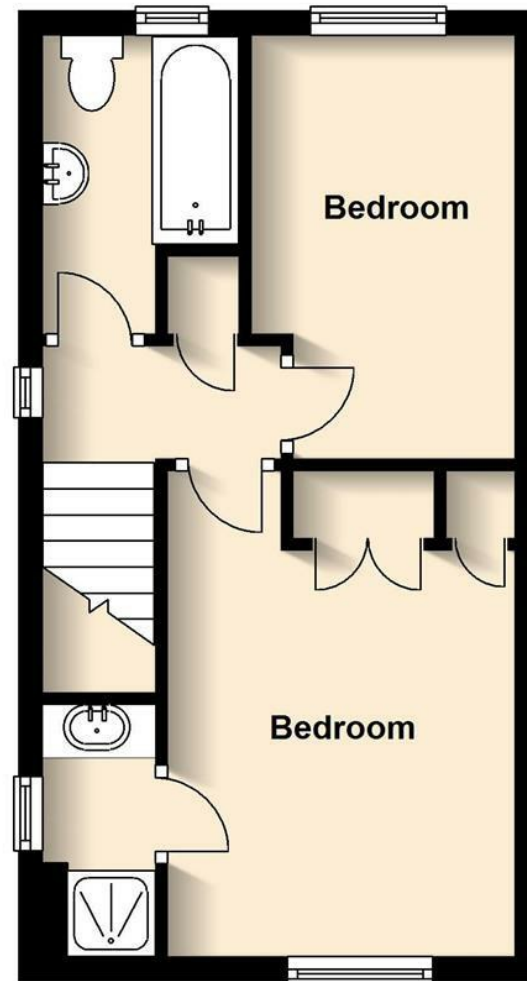
Ground Floor

Approx. 43.0 sq. metres (463.4 sq. feet)



First Floor

Approx. 28.5 sq. metres (307.0 sq. feet)



Total area: approx. 71.6 sq. metres (770.4 sq. feet)

Your Property - Our Business

- Residential Estate Agents
- Lettings and Property Managers
- Land and New Homes Agents

Leamington Spa Office
Somerset House
Clarendon Place
Royal Leamington Spa
CV32 5QN

01926 881144 ehbresidential.com

Energy Efficiency Rating		Current	Potential
Very energy efficient - lower running costs			
(92 plus)	A		
(81-91)	B		87
(69-80)	C		
(55-68)	D	68	
(39-54)	E		
(21-38)	F		
(1-20)	G		
Not energy efficient - higher running costs			
England & Wales		EU Directive 2002/91/EC	

Also at: Warwick, 17-19 Jury St, Warwick CV34 4EL