



KILLYON ROAD, SW8

£580,000

Two double bedrooms
Modernised throughout
Share of freehold
Quiet residential street
First floor apartment
Victorian conversion



ABOUT THE PROPERTY

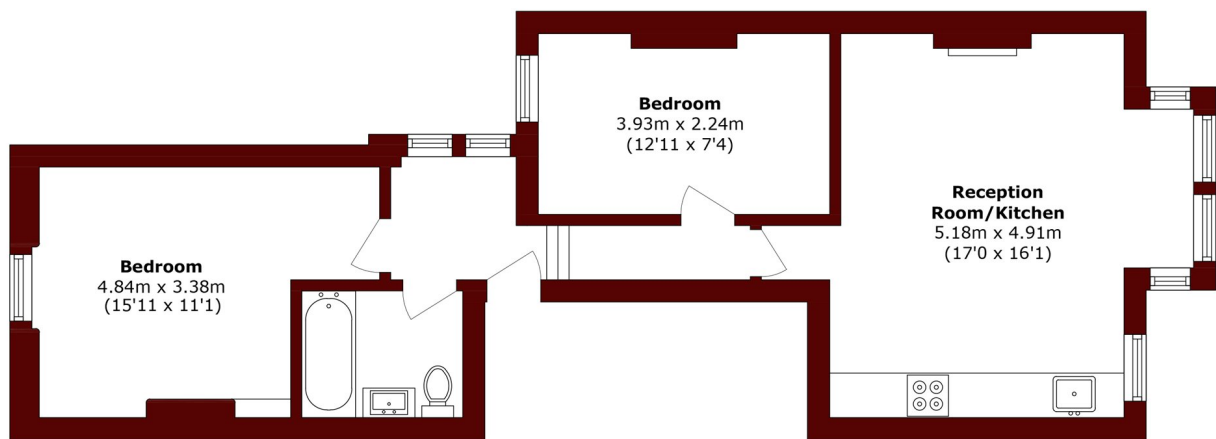
A superb two bedroom flat set on the first floor of a converted Victorian house, ideally located on a quiet residential street just moments from Clapham Common and Clapham Old Town.

Ideally located on the sought after Killyon Road, a quiet, tree-lined residential street, this charming flat is just a short stroll from the vibrant independent shops, cafés, and restaurants of Clapham Old Town. The wide open green spaces of Clapham Common are also close by, offering an ideal setting for outdoor leisure and relaxation.

Transport connections are excellent, with Clapham Common underground (Northern line) and Wandsworth



STEP INSIDE KILLYON ROAD



Total area (approx.): 59.6 sq. m (641.5 sq. ft)

Clapham
020 7501 3666

Energy Rating: D We aim to make our particulars both accurate and reliable. However, they are not guaranteed; nor do they form part of an offer or contract. If you require clarification on any points then please contact us, especially if you're traveling some distance to view. Please note that appliances and heating systems have not been tested and therefore no warranties can be given as to their good working order

MARSH &
PARSONS