

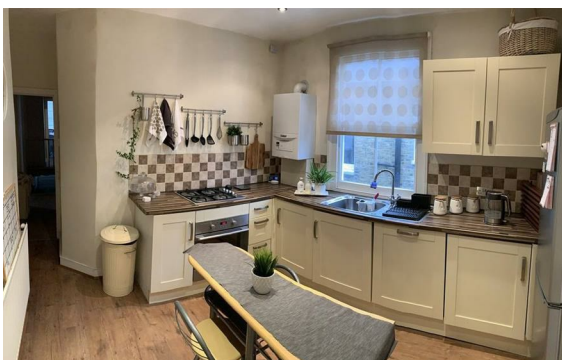
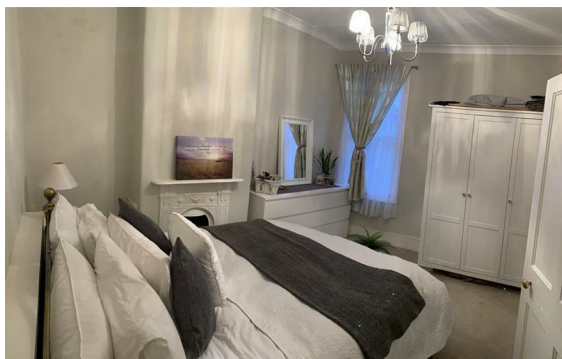


Grove End Road, St John's Wood, London, NW8

Rent £1,270 Per Month

2 Bed | 2 Bath | 1 Reception

Please call us on 020 7724 2233 or email us info@newingtonstates.com to book a viewing.



The property is presented in excellent condition throughout and comprises a principal bedroom with built-in wardrobes, a second bedroom or study, and an impressive reception room with dining area. A separate fully fitted kitchen provides additional practicality, making the layout ideal for both everyday living and entertaining.

Further benefits include porterage, lift access, and well-maintained communal gardens. Ideally located close to the amenities of St John's Wood High Street, with excellent transport links via St. John's Wood Station and the open green spaces of Regent's Park nearby.

EPC rating: D

Energy Efficiency Rating: D

Agents Note: Whilst every care has been taken to prepare these particulars, they are for guidance purposes only. All measurements are approximate and are for general guidance purposes only and whilst every care has been taken to ensure their accuracy, they should not be relied upon and potential buyers/tenants are advised to recheck the measurements.

NEWINGTON
— ESTATES —

60 Upper Montagu Street

London

W1H 1SN

020 7724 2233

info@newingtonstates.com

<http://www.newingtonstates.com>