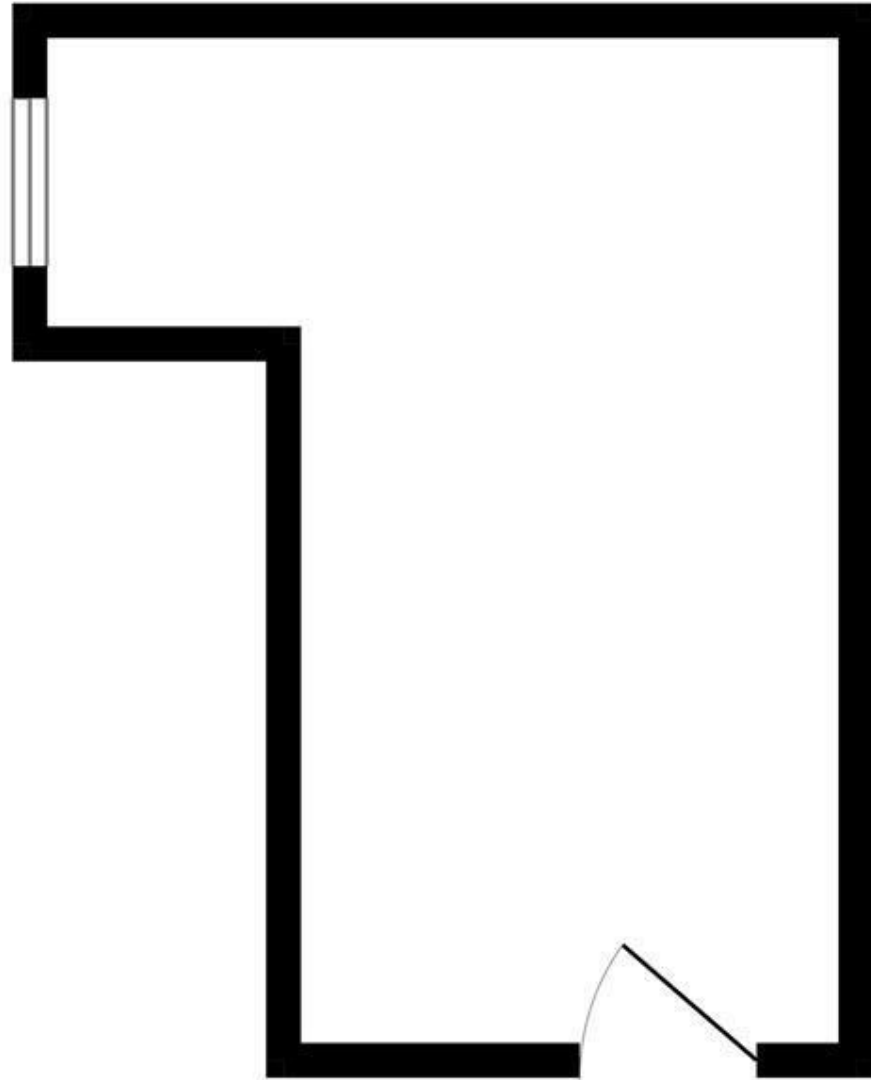


GROUND FLOOR
139 sq.ft. (12.9 sq.m.) approx.

GRAVITY
estates

Gravity Estates
18 Golders Green Road, NW11 8LL
02083570810
sales@gravity-estates.com
www.gravity-estates.com



St Albans Lane, Golders Green, London NW11 7QE

Rent £400 Per Month

Sq Ft: 139

Very Good location, Golders Green Tube Station is 1 minutes Walk.

1 Open Single Reception Room on the Second Floor.

Office has been refurbished with white painted walls.

The Service Charge is covered by the rent however the bills would be paid separately.

Available Now

ST ALBANS

TOTAL FLOOR AREA: 139 sq.ft. (12.9 sq.m.) approx.

Whilst every attempt has been made to ensure the accuracy of the floorplan contained here, measurements of doors, windows, rooms and any other items are approximate and no responsibility is taken for any error, omission or mis-statement. This plan is for illustrative purposes only and should be used as such by any prospective purchaser. The services, systems and appliances shown have not been tested and no guarantee as to their operability or efficiency can be given.
Made with Metropix ©2024

Gravity Estates
18 Golders Green Road, London, NW11 8LL
02083570810 sales@gravity-estates.com

£400 Per month

