



## Burrells Wharf Square, E14

### £300,000

Offered to the market in immaculate condition is this one-bedroom home, located within the sought-after Burrells Wharf development. The property features a refitted kitchen and bathroom, a private balcony with river views, access to residents' leisure facilities, and a concierge service.

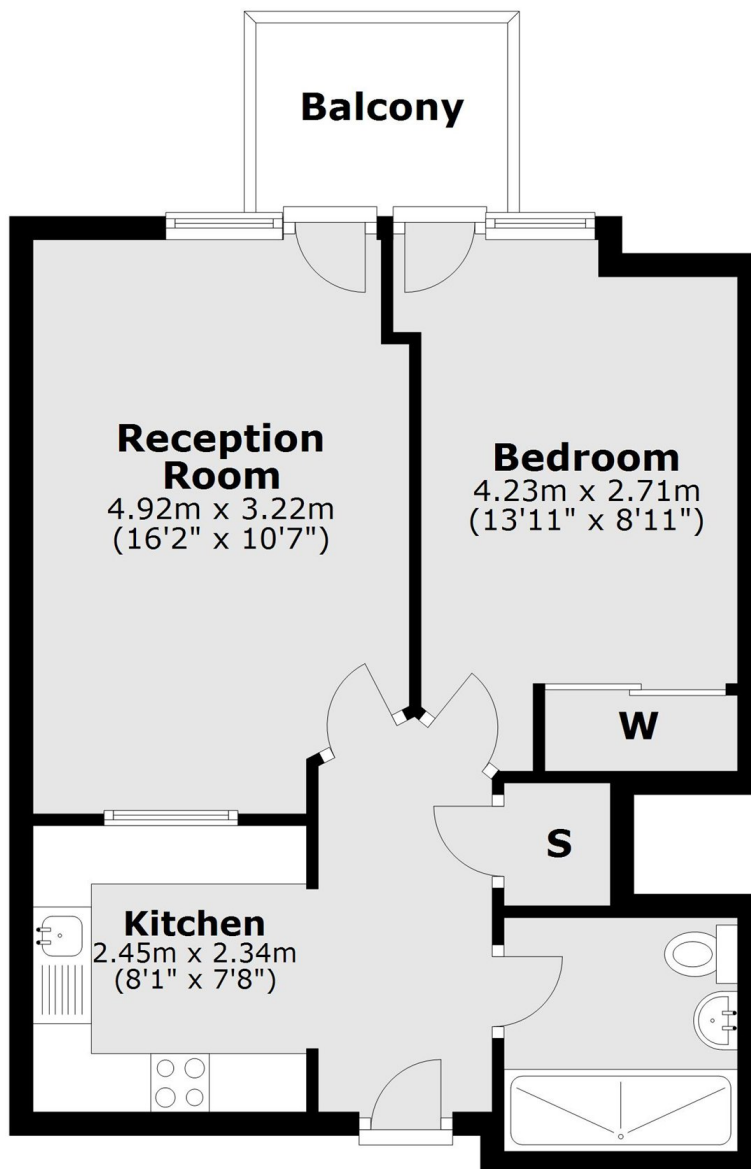
The development is located just over a mile from Canary Wharf, offering easy access to a wide range of shops, bars and restaurants. The area benefits from excellent transport links across London and to several airports via the DLR, Jubilee and Elizabeth lines. The Thames Clipper service departs from just outside Burrells Wharf. In addition, Mudchute DLR station is approximately 0.4 miles away, providing a direct journey to Bank in around 25 minutes.

### Features

- 473 Square Feet
- Private Balcony
- River Views
- Residents Leisure Facilities
- Concierge Service
- Allocated Parking

# Burrells Wharf Square, London, E14

## Second Floor



Total area: approx. 44.0 sq. metres (473.1 sq. feet)