



Knights Park, KT1

£300,000

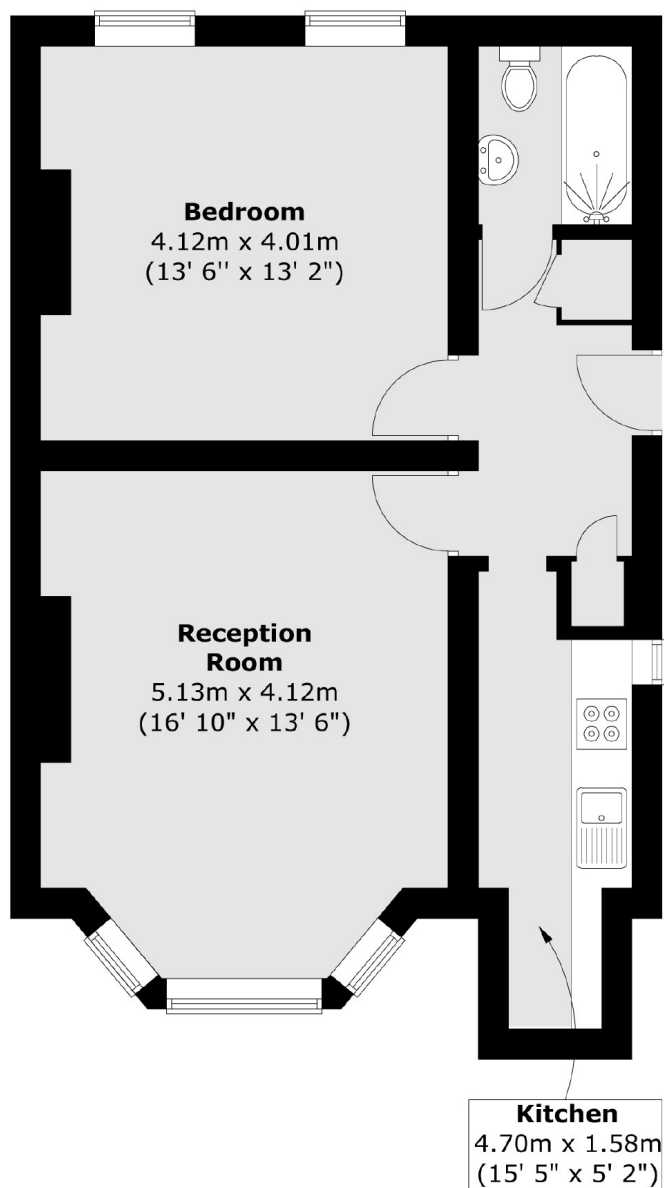
This charming lower ground floor, period conversion flat comprises a generous reception room, a well equipped modern kitchen, a stylish bathroom and a comfortable double bedroom, ideal for first time buyers, investors or downsizers alike. Set on one of Kingston's most sought after residential roads, this beautifully presented, lower ground floor flat forms part of a handsome period conversion, offering a perfect blend of character and comfort and has its own entrance.

Positioned just a short walk from Kingston town centre, the river, and mainline station, the flat enjoys the best of both peaceful residential living and convenient urban amenities. With excellent transport links, green open spaces and the charm of a leafy period street, this is a rare opportunity to secure a superb home in one of South West London's most desirable locations.

Features

- Lower Ground Floor
- Long Lease
- Low Service Charge
- Modern Specification
- Bright And Airy
- Excellent Location

Knights Park, Kingston Upon Thames, KT1



Total area (approx.) : 54.5 sq. m (587 sq. ft)