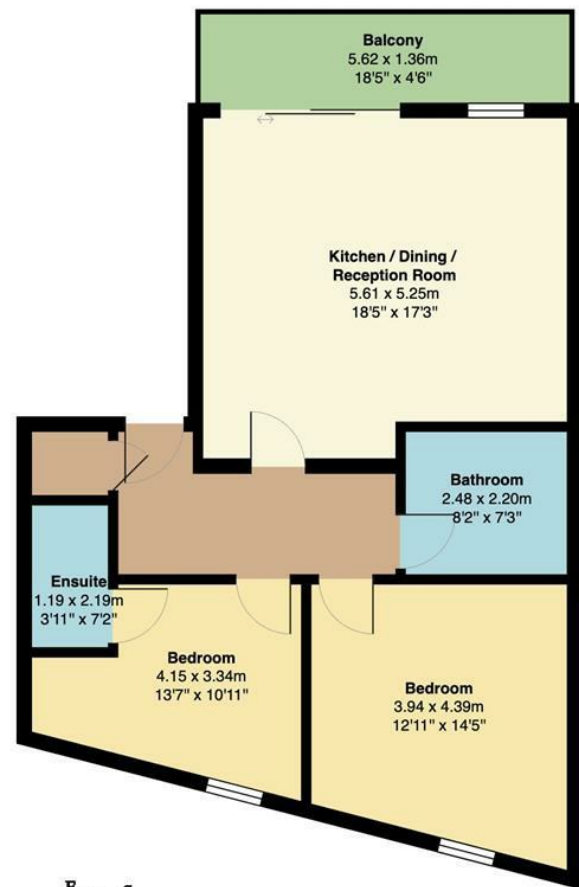


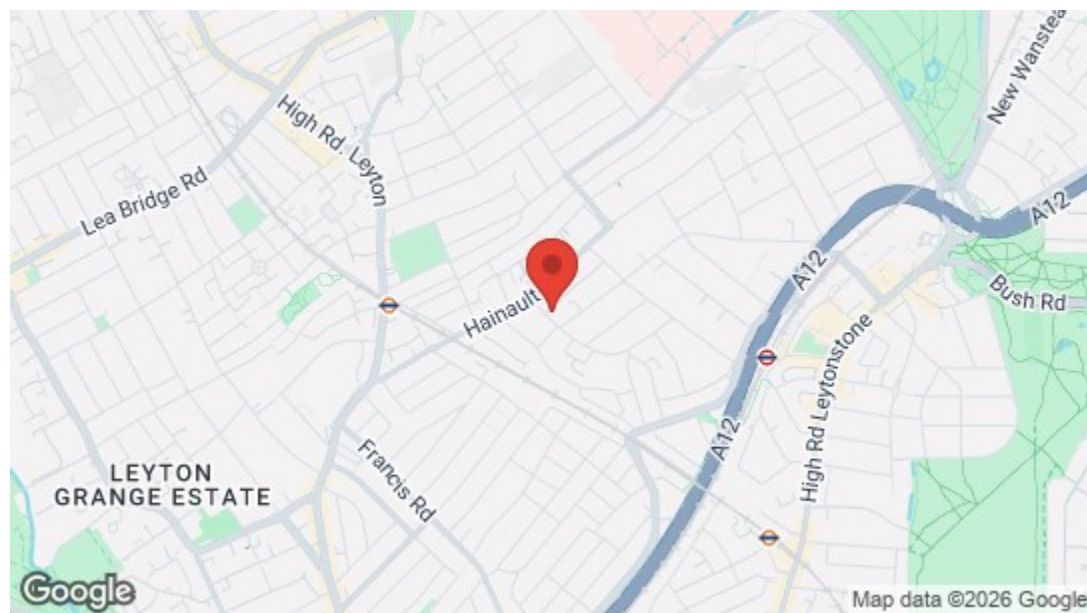
 **Bulwer Road, London**
£525,000 Leasehold
2 Bed Apartment



Second Floor

Total Area: 74.2 m² ... 798 ft²

All measurements are approximate and for display purposes only



Energy Efficiency Rating		Current	Potential
Very energy efficient - lower running costs			
(92 plus)	A	82	82
(81-91)	B		
(69-80)	C		
(55-68)	D		
(39-54)	E		
(21-38)	F		
(1-20)	G		
Not energy efficient - higher running costs			
England & Wales		EU Directive 2002/91/EC	

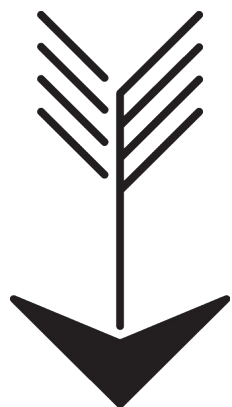


➔ **E17 Office**
 236 Hoe Street
 E17 3AY
 0203 397 9797
 hello17@stowbrothers.com

➔ **E11 Office**
 117a High Street
 E11 2RL
 0203 397 2222
 hello11@stowbrothers.com

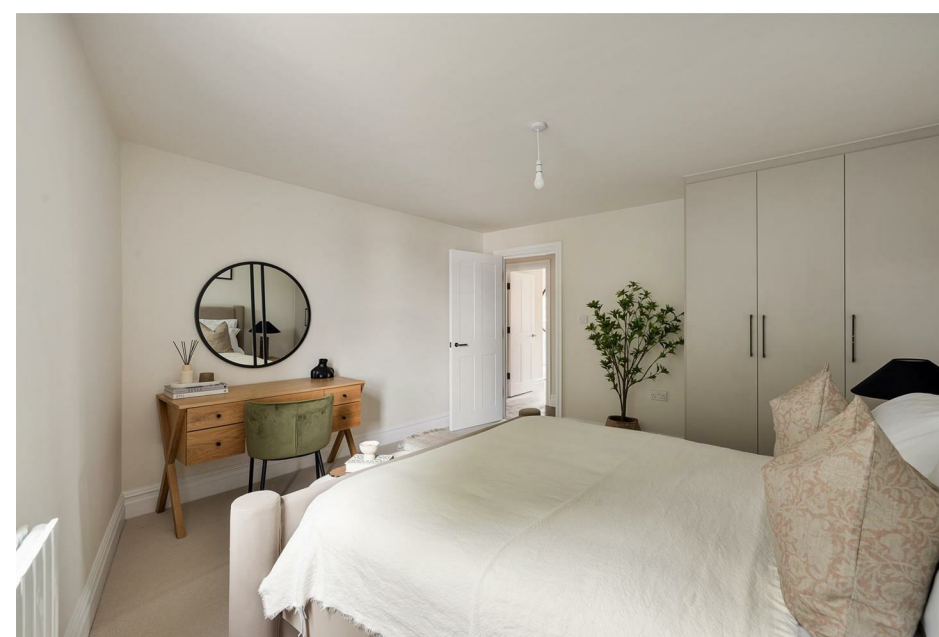
➔ **E4 Office**
 1 Bank Buildings,
 The Avenue, E4 9LE
 0203 369 6444
 hello4@stowbrothers.com

stowbrothers.com
 f @stowbrothers



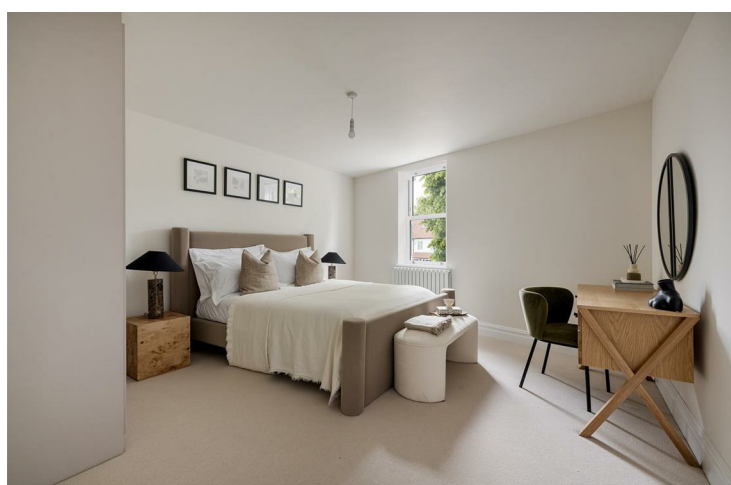
Features

- New Build Apartment
- Two Bedrooms
- Second Floor
- Brick Elevations
- Corner Plot
- Short Walk to Hollow Ponds
- Close to Wanstead Park
- Situated between Leyton Midland Road and Leytonstone Stations
- Final Homes Available



Located in the increasingly sought-after Upper Leytonstone neighbourhood, this brand new two-bedroom, two bathroom apartment has been flawlessly designed throughout, with a fantastic corner position on the the first floor of an architecturally striking development.

Highlights include the large open plan living space, immaculate decor, high-spec fittings and abundance of natural light throughout. As for the location, it offers quick access to excellent transport links, green spaces and top class amenities - perfect.



WHAT ELSE?

- You'll enjoy having the greenery of Abbotts Park so nearby, but you're also only a stroll from the glorious Hollow Ponds at the tip of Epping Forest. Head down for a picnic in summer when you can even hire a rowing boat. Further to the east you'll find Wanstead Park, a much loved community space and landmark of historical importance. Chalet Wood there is particularly popular during bluebell season.
- Hop on a bus for a few stops and you'll find yourself in the iconic Olympic Park, and just beyond that, Westfield Stratford, which won't need an introduction.
- Nearby there's also East Bank, a unique collaboration between world-leading universities, arts and culture institutions, including Sadler's Wells, BBC and V&A.





➤➤ IF YOU LIVED HERE...

This brand new development has been designed with modern living in mind, so you can expect box fresh decor and sparkling fittings throughout. An excellent start to the new phase of your life, we're sure you'll agree.

Your spacious open plan kitchen/living area is bright and spacious, with smart flooring sweeping the length and plenty of room for dining, relaxing, working and socialising, along with a private balcony perfect for al fresco dining and lounging. The kitchen area will be a pleasure to use with its sleek cabinets, stainless steel sink, integrated appliances and spotless worktops. You'll love the contrast between the down lights and pendant fittings too.

The two bedrooms are both just as plush. One bedroom has a sleek en-suite, and the master bedroom is just as smart and contemporary.

Just beyond your home, you'll find the part-pedestrianised Francis Road, which is now recognised across the capital as a hub thanks to its eclectic mix of eateries and stores. There's loads to choose from there, but how about starting with wine bar Yardarm or independent book store Phlox? Meanwhile, around the Leyton Midland Road arches, you've got some brilliant choices, including the much lauded smokehouse Burnt ('dreamy' according to the Guardian), as well as the ever-popular Gravity Well Taproom.

A similar distance away, the Grove Green Road area has been buzzing with activity for a few years and is now a hangout in its own right. The Filly Brook, Heathcote & Star and the brilliantly eclectic Northcote Arms there and sure to become faves.

Leytonstone station is around 10 minutes on foot to give you access to the Central Line. Leyton Midland Road is a similar distance for the Gospel Oak to Barkingside line - handy if you want to nip to the Essex seaside. You've got a good selection of bus routes nearby too.

