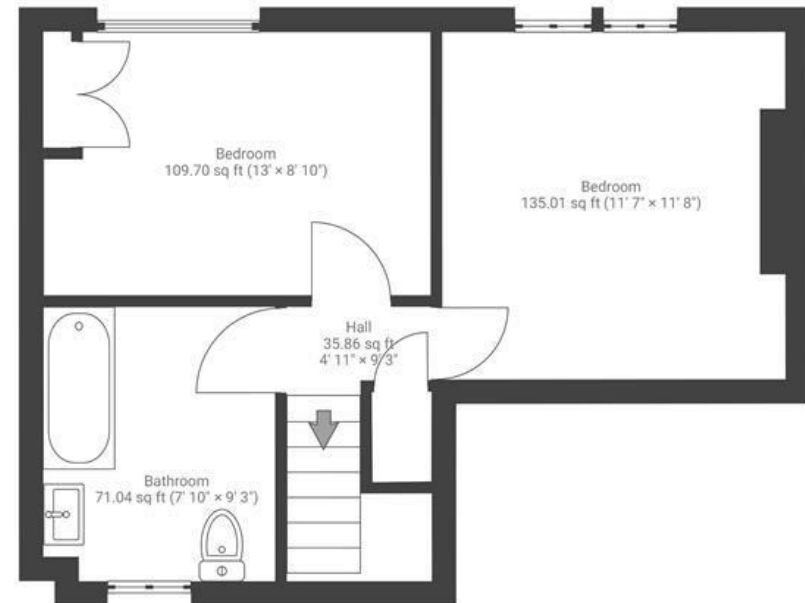
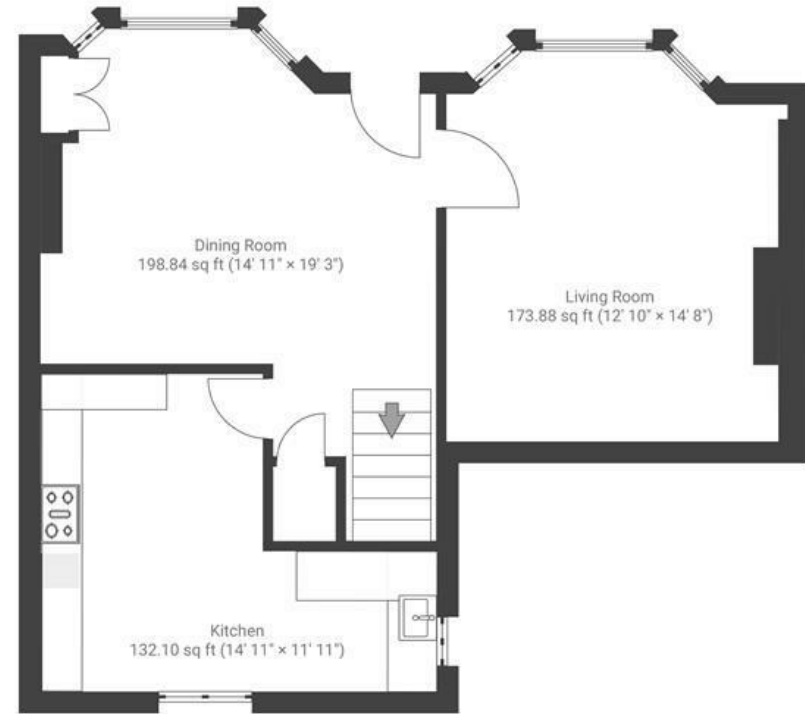


Sandbach Road

BRISLINGTON

APPROXIMATE FLOOR AREA
84.6 SQM / 911 SQFT



Boardwalk

Sandbach Road , BRISTOL



£375,000



2 Bedrooms



BS4 3RZ



1 Bathrooms

"We've loved having space to enjoy life both inside and out. In the winter we get cosy and curl up by the roaring log fire until the blossom on our cherry tree lets us know Spring has arrived! In summer we're out in the garden making pizzas, barbecuing and soaking up the sunshine."

