



BEAUFORT GREEN

Palliser Road, W14

£1,100,000



Located on Palliser Road, moments from Barons Court and West Kensington, this beautifully presented split-level apartment offers approximately 1,221 sq ft of well-balanced accommodation in a highly connected W14 setting.



Set within an attractive red-brick period building, the property is arranged across the first and second floors and centres around an impressive open-plan kitchen and reception room. Designed with both everyday living and entertaining in mind, the space combines a generous reception area with bespoke fitted cabinetry, wide timber flooring and excellent natural light, alongside a contemporary kitchen with integrated appliances, extensive storage and a dedicated dining area.

A further bedroom is positioned on the first floor, offering flexibility as a guest room, study or additional living space, with access to a private balcony overlooking Palliser Road. Upstairs, the second floor provides two well-proportioned bedrooms, including a generous principal bedroom with an en suite shower room, alongside a separate family bathroom.

Palliser Road is ideally positioned for Barons Court, West Kensington and the wider Fulham area, with excellent transport links, local cafés, shops, Queen's Club and nearby green spaces all within easy reach.



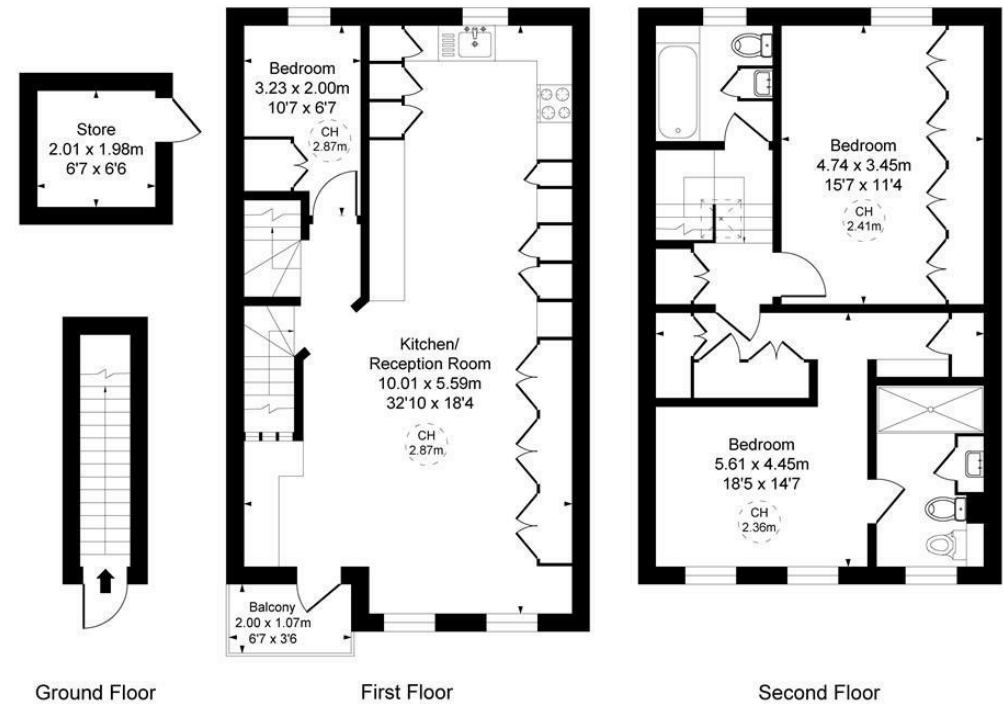


BEAUFORT GREEN



BEAUFORT GREEN

Palliser Road, W14
Approximate Gross Internal Area
113.41 sq m / 1221 sq ft
(CH = Ceiling Heights)



At a Glance.

- First and second floor apartment
- Three bedrooms
- Two bathrooms
- Open-plan kitchen/reception room
- Principal bedroom with en suite
- Private balcony overlooking Palliser Road

This plan is not to scale. It is for guidance and not for valuation purposes.
All measurements and areas are approximate only, and have been prepared in accordance with the current edition of the RICS Code of Measuring Practice.

BEAUFORT GREEN

02074594100

charlie@beaufortgreen.co.uk

263 New Kings Road
London
SW16 1DB