

Because life is

Petty
Real™

Bromley Church Meadows
Barrowford
BB9 6QS



For Sale

£414,995

- New Development!
- Sought After Location
- 4 Bedrooms
- Spacious Living Room
- Kitchen/Dining/Family Room
- Master With Fitted Wardrobes and En-Suite
- Driveway
- Separate Garage
- Rear Garden
- 10 Year NHBC Warranty



Plot 52 – The Bromley

Discover modern family living in this impressive four-bedroom detached home, forming part of an exclusive new development in the highly desirable village of Barrowford, built by McDermott Homes.

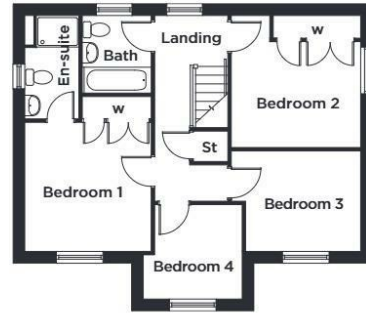
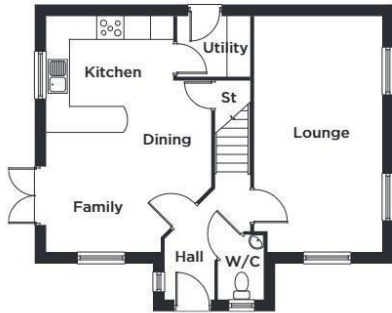
The Bromley has been thoughtfully designed to blend contemporary style with spacious interiors and high-quality finishes, creating a home that is both elegant and practical – perfectly suited to growing families or those seeking extra space.

The ground floor offers a bright and welcoming lounge, ideal for relaxing at the end of the day. The exceptional open-plan dining kitchen and family space features stylish modern cabinetry and plenty of room for everyday dining and entertaining. Patio doors lead out to the South West-facing garden, seamlessly connecting indoor and outdoor living. A separate utility room and a convenient downstairs WC enhance the home's functionality.

Upstairs, the principal bedroom provides a tranquil retreat, complete with fitted wardrobes and a sleek en-suite shower room. The second bedroom also benefits from fitted wardrobes, while two additional well-proportioned bedrooms offer versatility for children, visitors, or a home office. A contemporary family bathroom serves the remaining bedrooms, and clever storage solutions throughout maintain a tidy, streamlined feel.

Outside, the property enjoys a rear garden, along with a private driveway and a detached single garage, offering secure storage and ample off-road parking.

THE BROMLEY
4 Bedroom Detached Home



GROUND FLOOR

LOUNGE	3.22m x 6.04m	10'7" x 19'9"
KITCHEN/DINING/FAMILY	4.17m x 6.04m	13'8" x 19'9"
UTILITY	1.83m x 1.53m	6'0" x 5'0"
W/C	1.14m x 1.65m	3'9" x 5'5"

FIRST FLOOR

BEDROOM 1	3.20m x 3.30m	10'6" x 10'10"
EN-SUITE	1.33m x 2.65m	4'5" x 8'8"
BEDROOM 2	3.28m x 3.39m	10'9" x 11'1"
BEDROOM 3	3.28m x 2.56m	10'9" x 8'5"
BEDROOM 4	2.47m x 2.40m	8'1" x 7'11"
BATH	1.77m x 1.98m	5'10" x 6'6"

Please note: All sizes shown are Maximum room dimensions and exclude wardrobes



These particulars, whilst believed to be accurate are set out as a general outline only for guidance and do not constitute any part of an offer or contract. Intending purchasers should not rely on them as statements of representation of fact, but must satisfy themselves by inspection or otherwise as to their accuracy. No person in this firm's employment has the authority to make or give any representation or warranty in respect of the property.

11 Albert Road, Colne, Lancashire, BB8 0RY
T. 01282 615900
Barrowford.sales@pettyreal.co.uk

www.pettyreal.co.uk