





LOVELY THREE BEDROOM DETACHED HOME, TUCKED AWAY ON BRYSON CLOSE IN THORNE AND AVAILABLE FOR SALE WITH NO CHAIN. This fantastic property is deceptively spacious and is within easy reach of all Thorne's local amenities. Pleasantly presented, an early viewing is highly recommended and the accommodation in brief comprises of entrance hallway, lounge, kitchen/diner, inner hall, WC, stairs to the first floor landing, master bedroom with en-suite shower room, two further spacious bedrooms, bathroom, front driveway, integral single garage and rear garden. VIEWINGS A MUST TO FULLY APPRECIATE THE SPACE.



ENTRANCE HALL

2' 9" x 2' 10" (0.86m x 0.87m) The property is accessed via the side facing double glazed door to the hallway, front facing double glazed window, radiator, alarm system and door to the lounge.

LOUNGE

10' 7" x 14' 5" (3.24m x 4.40m) Spacious reception room with open access to the dining area in the kitchen, front facing double glazed window, radiator, coving, coal effect gas fire and a decorative surround.

KITCHEN/DINER

19' 5" x 8' 5" (5.94m x 2.57m) Fabulous open plan kitchen/diner with a range of fitted kitchen cabinetry at both eye and base level, work surfaces incorporating a single bowl sink with drainer, four ring gas hob with extractor fan above, single electric oven, extractor fan, plumbing for a washing machine, space for a fridge, breakfast bar, partially tiled walls, rear facing double glazed window, rear facing double glazed French doors to the garden, open access to the lounge and door to the inner hall.

INNER HALL

Providing access to WC, integral garage and stairs to the first floor.

WC

5' 2" x 3' 3" (1.60m x 1.01m) Benefitting from a low flush WC, wash hand basin, radiator and side facing double glazed frosted window.

STAIRS

Leading from the inner hall to the first floor landing.



LANDING

Providing access to the bedrooms/bathroom, airing cupboard, loft access point, radiator and side facing double glazed window.







BEDROOM

11' 9" x 6' 5" (3.60m x 1.96m) Double bedroom with door to the en-suite, two front facing double glazed windows, radiator and fitted wardrobes.

ENSUITE

7' 3" x 4' 3" (2.21m x 1.31m) Comprising of a low flush WC, wash hand basin, corner shower cubicle, radiator, extractor fan, tiled walls and front facing double glazed frosted window.

BEDROOM

9' 9" x 8' 11" (2.99m x 2.74m) Further spacious bedroom with rear facing double glazed window, radiator and storage cupboard.

BEDROOM

9' 5" x 6' 2" (2.88m x 1.88m) Third bedroom is positioned at the rear of the house with radiator and rear facing double glazed window.

BATHROOM

6' 4" x 5' 6" (1.94m x 1.68m) Three piece suite comprising of low flush WC, wash hand basin, bath with shower above, tiled walls, extractor fan, radiator and side facing double glazed frosted window.

DRIVEWAY & INTEGRAL GARAGE

Off street parking is available on the front for two cars and front facing up and over door leads to the single integral garage.

REAR GARDEN

Lawned area, paved patio, trees/bushes, further raised patio, shed, fence/wall enclosed and side access gate to the front.

NOTES

FREEHOLD PROPERTY

COUNCIL TAX BAND: A

HEATING SYSTEM: GAS FIRED CENTRAL HEATING

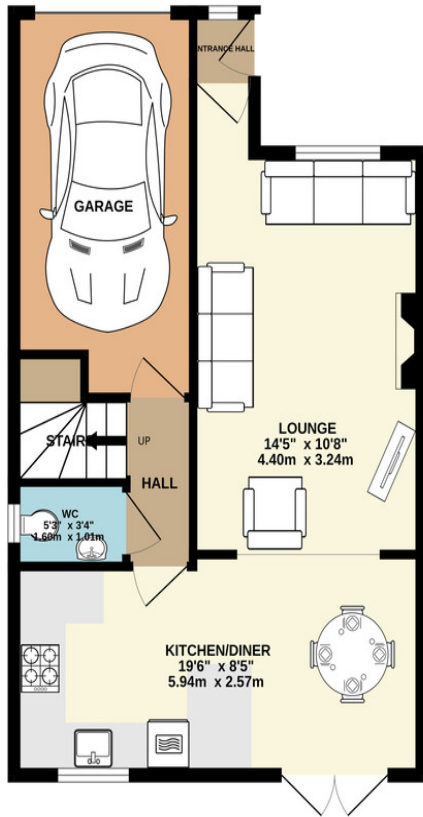
INSTALLATION DATE: 2020

LAST SERVICE: 2025

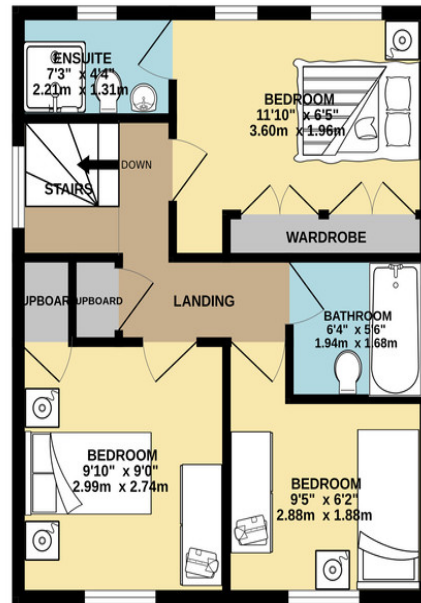
SERVICES: MAINS



GROUND FLOOR
537 sq.ft. (49.8 sq.m.) approx.



1ST FLOOR
448 sq.ft. (41.6 sq.m.) approx.



TOTAL FLOOR AREA : 984 sq.ft. (91.4 sq.m.) approx.

Whilst every attempt has been made to ensure the accuracy of the floorplan contained here, measurements of doors, windows, rooms and any other items are approximate and no responsibility is taken for any error, omission or mis-statement. This plan is for illustrative purposes only and should be used as such by any prospective purchaser. The services, systems and appliances shown have not been tested and no guarantee as to their operability or efficiency can be given.