



Carlisle Place, SW1P | £4,000 Per Month



TUCKERMAN
ESTATE AGENTS
PROPERTY PROFESSIONALS

Carlisle Mansions, Carlisle Place

Set in the prestigious Carlisle Mansions on Carlisle Place, this splendid apartment spans an impressive 1,681 square feet. The property boasts four generously sized bedrooms, making it an ideal choice for families or those seeking extra room for guests or a home office.

The apartment features a welcoming reception room, separate dine in kitchen, three spacious double bedrooms (two with en-suite bathrms) and a further single bedroom or study.

Carlisle Mansions is renowned for its charming architecture and prime location, providing easy access to local amenities, transport links, and the vibrant culture of the surrounding area. This property not only offers a luxurious living space but also the opportunity to immerse oneself in the rich history and community spirit of the neighbourhood.

In summary, this apartment at Carlisle Mansions is a rare find, combining spacious living with modern comforts in a sought-after location.





Carlisle Mansions, Carlisle Place

Let Agreed

Per Month: £4,000 Per Month

Furnishing: Unfurnished


Available From: 6th February 2026

Local Authority: City of Westminster

Council Tax Band: F

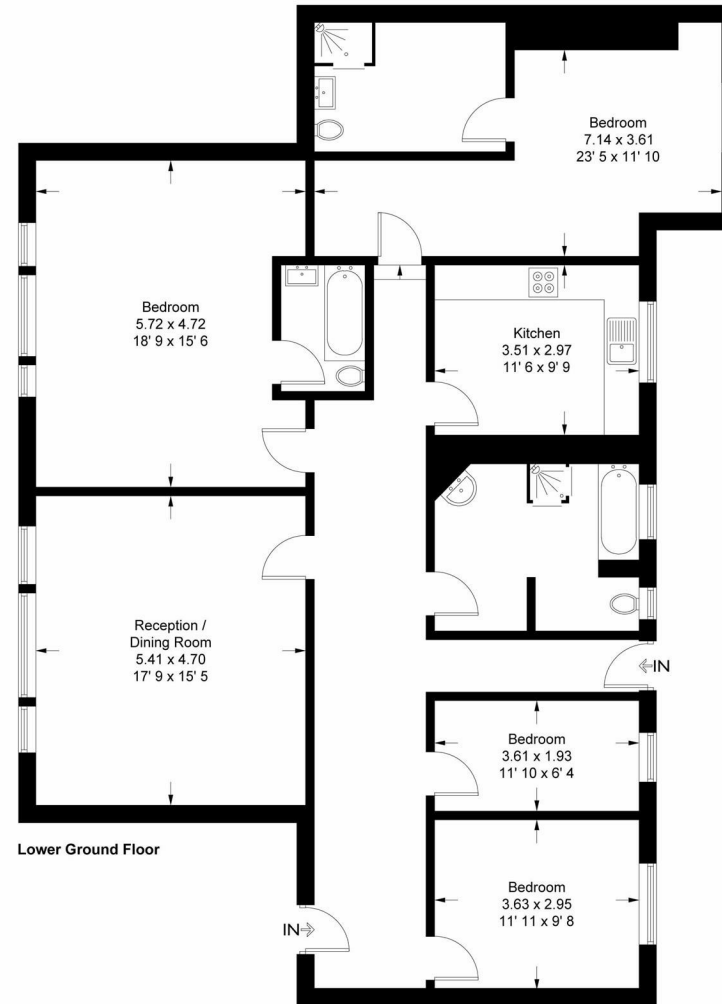
Approximate Gross Internal Area:
1681.00 sq ft

Energy Efficiency Rating

	Current	Potential
<i>Very energy efficient - lower running costs</i>		
(92 plus) A		
(81-91) B		
(69-80) C	77	81
(55-68) D		
(39-54) E		
(21-38) F		
(1-20) G		
<i>Not energy efficient - higher running costs</i>		
England & Wales	EU Directive 2002/91/EC	

Carlisle Mansions

Approximate Gross Internal Area = 1681 sq ft / 156.2 sq m



This plan is not to scale and must be used as layout guidance only. All measurements and areas are approximate and should not be relied upon to provide accurate information. This plan must not be relied upon when making property valuations, design considerations or any other such relevant decisions. We accept no responsibility or liability (whether in contract, tort or otherwise) in relation to any loss whatsoever arising from or in connection with any use of this plan or the adequacy, accuracy or completeness of it or any information within it.

Agents Note: Whilst every care has been taken to prepare these sales particulars, they are for guidance purposes only. All measurements are approximate are for general guidance purposes only and whilst every care has been taken to ensure their accuracy, they should not be relied upon and potential buyers are advised to recheck the measurements

TUCKERMAN
ESTATE AGENTS
PROPERTY PROFESSIONALS

020 7222 5510

info@tuckermanresidential.co.uk
52 Moreton Street, London, SW1V 2PB
www.tuckermanresidential.co.uk