



Price

£460,000

Freehold

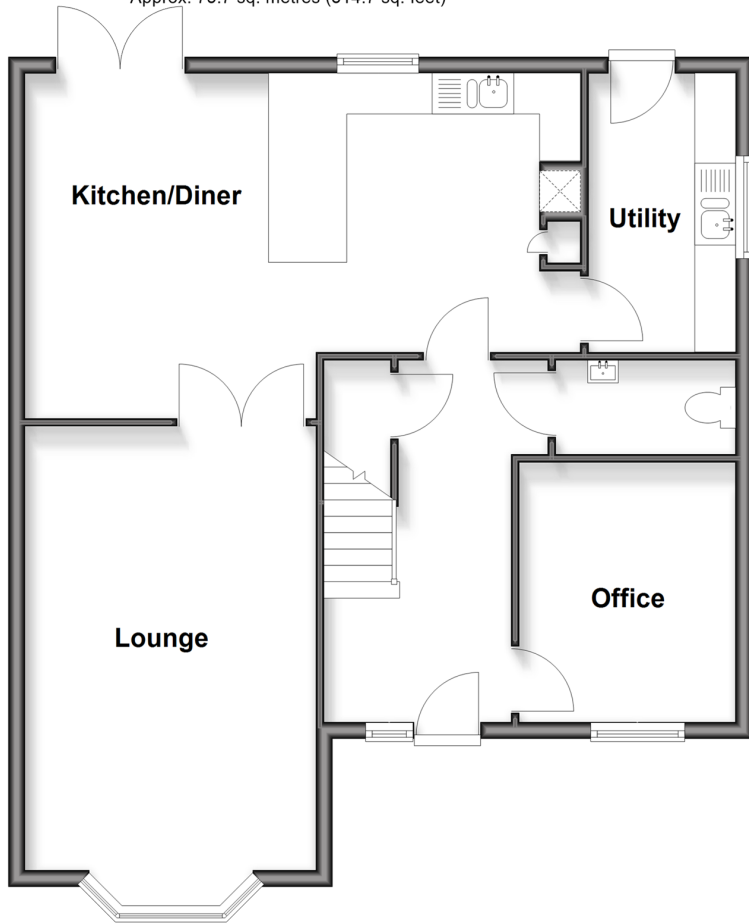
4x  1x  2x 

**Parish Close,
Birchington, Kent, CT7**

Wards
Helping you move forwards

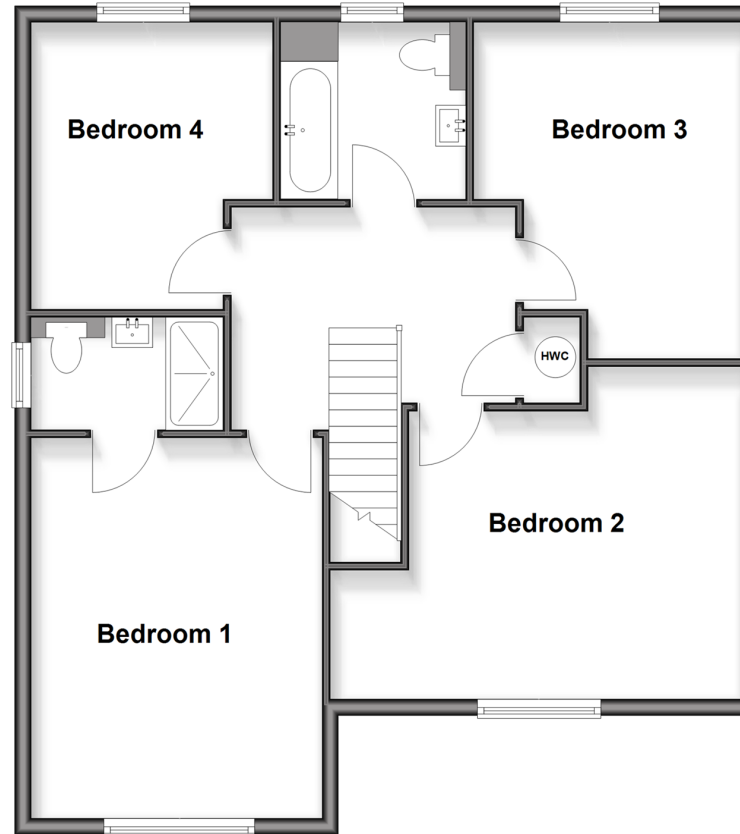
Ground Floor

Approx. 75.7 sq. metres (814.7 sq. feet)



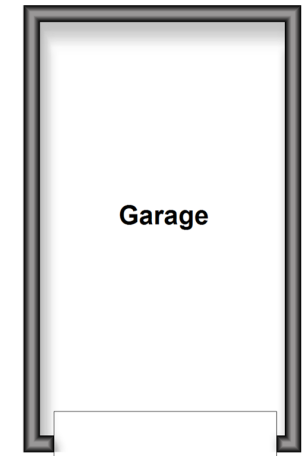
First Floor

Approx. 77.2 sq. metres (831.1 sq. feet)



Outbuilding

Approx. 15.2 sq. metres (163.7 sq. feet)



Accommodation

GROUND FLOOR

Entrance Hall

Office: 10'7 x 8'10 (3.23m x 2.69m)

Cloakroom: 7'2 x 3'9 (2.19m x 1.14m)

Lounge: 21'2 x 11'8 (6.46m x 3.56m)

Kitchen/Diner: 22'5 x 13'1 (6.84m x 3.99m)

Utility Room: 11'5 x 5'11 (3.48m x 1.80m)

FIRST FLOOR

Landing

Bedroom 2: 16'5 x 12'8 (5.01m x 3.86m)

Bedroom 3: 13'7 x 10'11 (4.14m x 3.33m)

Bathroom

Bedroom 4: 11'2 x 9'8 (3.41m x 2.95m)

En-Suite Shower Room

Bedroom 1: 15'6 x 11'9 (4.73m x 3.58m)

OUTSIDE

OutBuilding

Garage

Garden

Driveway



Main features

- Popular village location
- Spacious lounge and open-plan kitchen/diner
- Additional reception room and separate utility room
- Master bedroom with en-suite plus family bathroom
- Good-sized garden, driveway, garage and no onward chain



Nearest Schools

Primary Schools: St Nicholas At Wade C of E Primary 0.2 miles, Monkton C of E Primary 1.4 miles, Birchington C of E Primary 2.7 miles

Secondary Schools: King Ethelbert School 3.4 miles,



Transport Information

Train Stations: Birchington-On-Sea 2.7 miles, Minster 3.0 miles, Westgate-on-Sea 4.2 miles



Address

Parish Close, Birchington, Kent, CT7



Directions

For directions to this property please contact us.





Wards
Helping you move forwards

Call Birchington Branch 01843 842551 ■ wardsofkent.co.uk



| EPC RATING | CURRENT: | POTENTIAL: |
|---|---|---|
|   |  B(85) |  A(93) |

10129795/20260505/LT/AT