



Victoria Road, KT6

£335,000

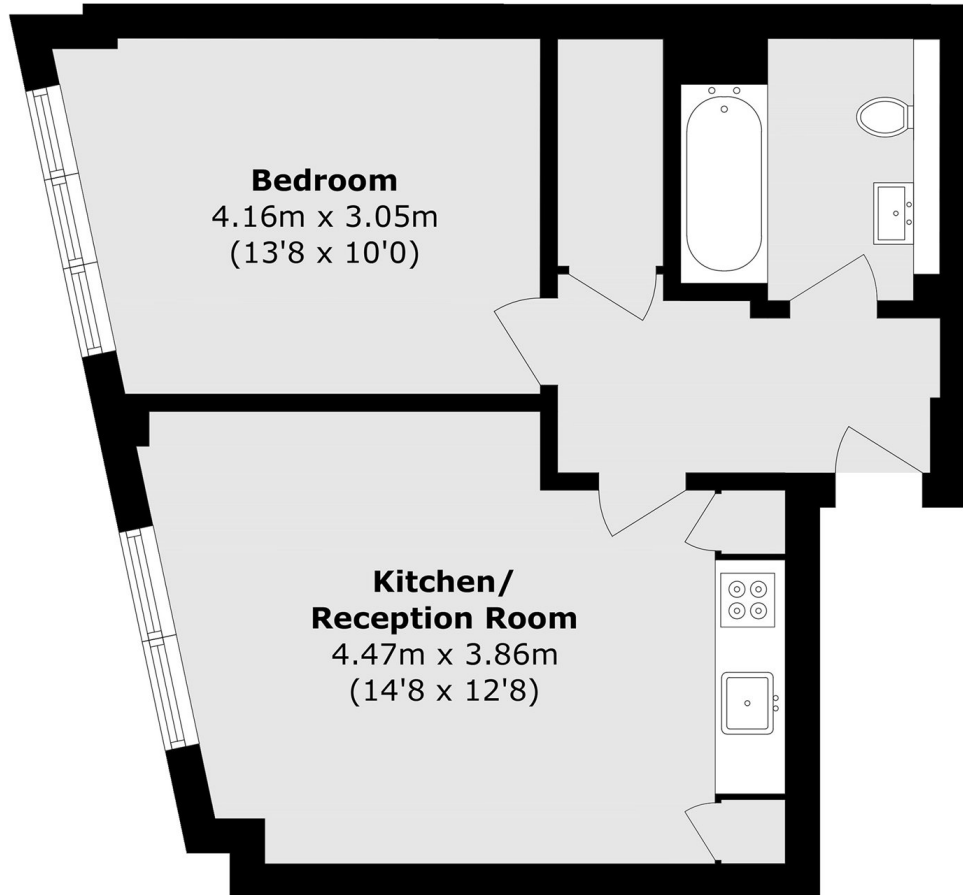
A spacious one bedroom apartment in phase 2 of St Andrews House, a new exclusive development consisting of apartments that have been finished to a high specification. The properties have beautifully designed kitchens with quartz worktops, porcelain tiled bathrooms and oak engineered flooring with carpeted bedrooms. The development has a fabulous roof terrace and gardens with far reaching views available for all residents, providing a unique retreat for relaxing and socialising.

St Andrews House is perfectly located in central Surbiton with its vibrant atmosphere, offering easy access to a range of amenities including bars, restaurants and shops. Surbiton Station is close by and provides excellent access to London Waterloo in under 20 minutes. The River Thames is a short walk away.

Features

- Brand New Build
- 10 Year Build Warranty
- High Specification
- Close To Shops
- Close To Station

Victoria Road, Surbiton, KT6



Total area (approx.): 50.8 sq. m (586.8 sq. ft)